

MEETING AGENDA
CITY OF EAST HELENA
CITY HALL – 306 EAST MAIN - ROOM 110
COUNCIL MEETING: 6:30 PM
DATE: TUESDAY, AUGUST 5, 2025
JOIN ZOOM MEETING: <https://us06web.zoom.us/j/3787705872>
CONFERENCE CALL-IN: 1-253-205-0468 MEETING ID: 378 770 5872

MEETING CALLED TO ORDER: Council President Dahl

PLEDGE OF ALLEGIANCE: Councilmember Feist

PUBLIC HEARINGS:

1. Resolution to Modify Existing Lighting District No. 101 – Council President Dahl
Action: Approve/Deny/Table
2. Resolution to Modify Existing Lighting District No. 201 – Council President Dahl
Action: Approve/Deny/Table
3. Resolution to Modify Existing Street Maintenance District No. 101 – Council President Dahl
Action: Approve/Deny/Table
4. Resolution to Modify Existing Street Maintenance District No. 201 – Council President Dahl
Action: Approve/Deny/Table

PUBLIC COMMENTS: Note: This time is set aside for comments from the public on matters that are not on the meeting agenda. Public comments will be taken on agenda items prior to a motion. All public comments will be limited to a reasonable duration. Prior to your comments, please state your name and address in an audible tone of voice for the record.

APPROVAL OF MINUTES: July 15, 2025

CITY COURT REPORT: City Judge Dennis Loveless

DEPARTMENTAL REPORTS:

Administration – Clerk/Treasurer Amy Thorngren
Police Department – Police Chief Mike Sanders
Public Works - Public Works Director Kevin Ore
Volunteer Fire Department - Fire Chief Roger Campbell

NEW BUSINESS:

1. 227 Days – Eagles 4040
Action: Approve/Deny/Table

2. East Helena Christmas Stroll – Stacia Winslow
Action: Approve/Deny/Table
3. Resolution 628 Authorizing the Sale of Surplus Property – Public Works Director Ore
Action: Approve/Deny/Table

MAYOR’S REPORT: Mayor Harris

COUNCILMEMBERS’ REPORTS:

Don Dahl
Judy Leland
Wesley Feist
Suzanne Ferguson

LEGAL REPORT: City Attorney Elverum

PAYMENT OF BILLS: Action: Approve/Deny/Table

MEETING SCHEDULE:

1. East Helena City Council Meeting, Tuesday, August 19, 6:30 p.m., City Hall Rm 110
2. East Helena City Council Meeting, Tuesday, September 2, 6:30 p.m., City Hall Rm 110

ADJOURNMENT: Council President Dahl

ADA NOTICE

The City of East Helena is committed to providing access to persons with disabilities for its meetings, in compliance with Title II of the Americans with Disabilities Act and the Montana Human Rights Act. The city will not exclude people with disabilities from participating in its meetings, or otherwise deny them the City’s services, programs, or activities. Persons with disabilities requiring accommodations to participate in the City’s meetings, services, programs, or activities should contact the City Clerk as soon as possible to allow sufficient time to arrange for the requested accommodation, at any of the following:

(406) 227-5321 or TTY Relay Service 1-800-253-4091 or 711

cityclerk@easthelenamt.us - 306 East Main Street, P.O. Box 1170, East Helena, MT 59635

CITY OF EAST HELENA
306 E MAIN ST / PO BOX 1170
EAST HELENA, MT 59635
(406) 227-5321

ORIGINAL COUNCIL MEETING DATE: 08/05/2025

Agenda item:

Resolution to Modify Existing Lighting District No. 101

From:

City Attorney Elverum

Initiated by City: ☒ YES ☐ NO (check one)

Department:

Roads & Streets

Presented by:

Council President Dahl

Action requested:

Approve/Deny/Table

PLEASE PROVIDE A NARRATIVE BACKGROUND OF THE PROPOSED AGENDA ITEM:

Highland Meadows Lighting District 101

Attachment:

Resolution 624

Attachments: ☒ YES ☐ NO (check one)

Date submitted:

RECOMMENDATIONS:

Approve for agenda:

☐ YES

☐ NO

Initial:

Referred to Dept. Head for resolution:

☐ YES

☐ NO

Referred to _____:

☐ YES

☐ NO

Agenda requests must be submitted to East Helena City Hall by noon the Wednesday prior to the Tuesday council meeting.

RESOLUTION NO. 624

A RESOLUTION MODIFYING SPECIAL IMPROVEMENT LIGHTING DISTRICT NO. 101 IN THE CITY OF EAST HELENA, MONTANA.

WHEREAS, §7-12-4301, et seq., MCA, allowed the City of East Helena to create special improvement lighting district No. 101; and

WHEREAS, §7-12-4351, et seq., MCA, authorizes the City of East Helena to modify an existing special improvement lighting district by changing the number and spacing of lights and making other modifications required by the public interest and conveniences; and

WHEREAS, §7-12-4335, et seq., MCA, authorizes the City of East Helena to change by resolution the boundaries of Special Improvement Lighting District No. 101 along the arterial streets and avenues in Phases I, II, III, and IV of the Highland Meadows Subdivision; and

WHEREAS, it appears to be in the best interests of the City of East Helena, and the inhabitants thereof, specifically the inhabitants of the area to be known as Special Improvement Lighting District No. 101, that said Special Improvement Lighting District No. 101 be modified.

WHEREAS, a public hearing was held on this matter on the 5th day of August, 2025, in the City Council Chambers at 306 East Main Street in East Helena, Montana.

BE IT RESOLVED BY THE CITY COUNCIL OF THE CITY OF EAST HELENA, MONTANA:

SECTION 1. That the City Council of the City of East Helena, Montana, hereby modifies Special Improvement Lighting District No. 101 in the City of East Helena for the purpose of installing and maintaining street lighting in Phase IV of Highland Meadows Subdivision, more particularly described on Exhibit “A” attached hereto and by this reference made a part hereof.

SECTION 2. The boundaries and properties constituting said Special Improvement Lighting District No. 101 shall be as described on Exhibit “B” attached hereto.

SECTION 3. The general character of the improvements and modifications to be made in said district is the installation and maintenance of an additional three (3) lighting units with underground wiring, fiberglass poles with 16-foot mounting heights, and an additional three (3) luminaries with 42-watt LED lamps in Phase IV of Highland Meadows Subdivision.

SECTION 4. The estimated total cost of maintaining said improvements, supplying electrical energy, and administration therefor for the first year throughout the entire district is \$7,401.60, with the estimated annual cost being \$30.97 per property owned, said amount to be paid by the property owners. That amount includes the additional assessment to be charged by the City to establish a cash reserve and recover any costs of the district incurred prior to receipt of the first assessments.

SECTION 5. All the costs of installing and maintaining said lighting shall be borne by the owners of the property embraced within the boundaries of said district.

Passed, by the City Council of the City of East Helena, Montana, and approved by the Mayor this 5th day of August, 2025.

Kelly Harris, Mayor

ATTEST:

Amy Thorngren, City Clerk/Treasurer

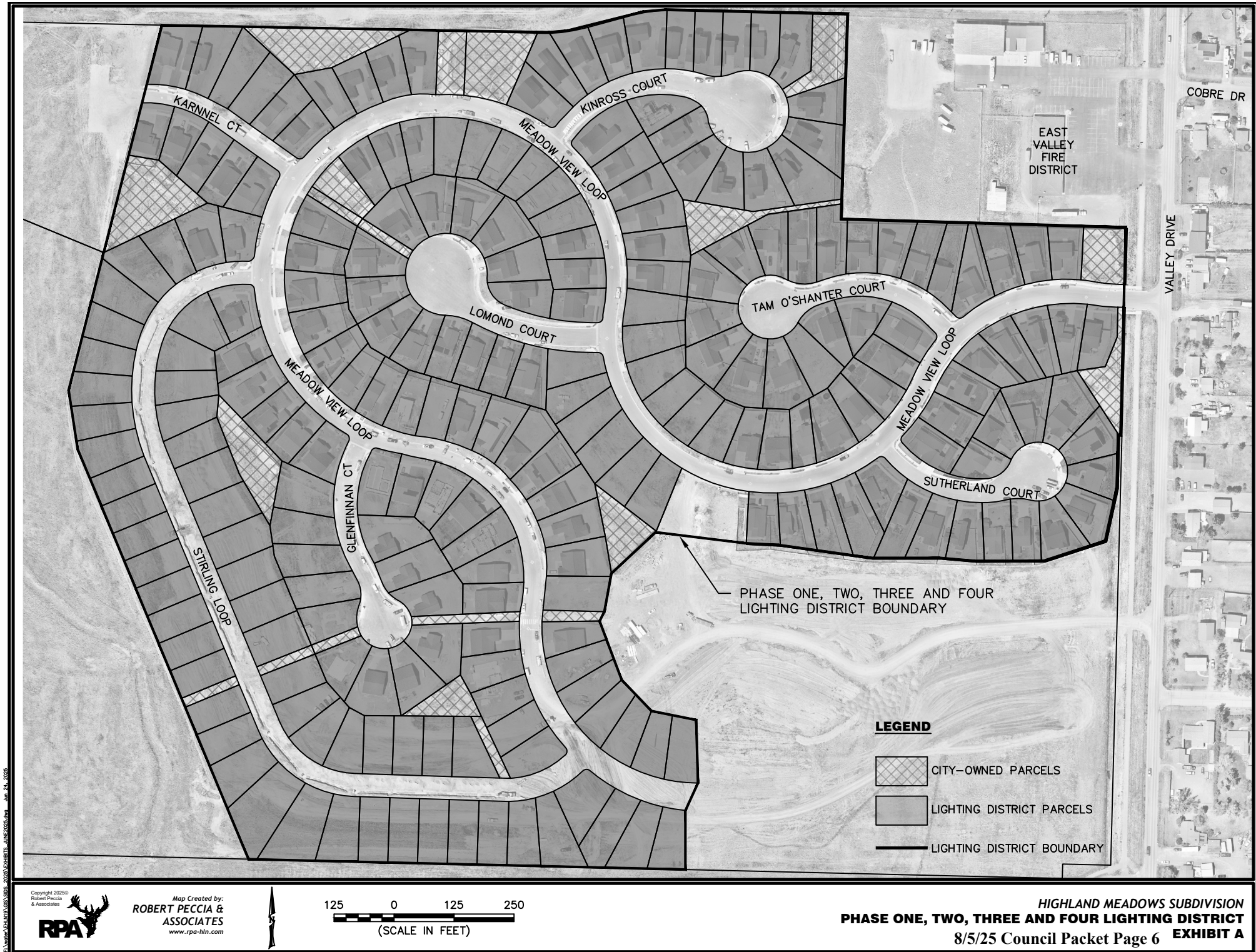


Exhibit B - Assessment

Property Address	City, State, Zip Code	Property Owner	Owner Mailing Address	Owner City	Owner State	Owner Zip Code	Yearly Assessment
310 SUTHERLAND CT	EAST HELENA, MT 59635	BURKETT CLAY & ALESA	310 SUTHERLAND CT	EAST HELENA	MT	59635-3146	\$ 30.97
352 MEADOW VIEW LOOP	EAST HELENA, MT 59635	JOHNSON RAYMOND & KELLY	352 MEADOW VIEW LOOP	EAST HELENA	MT	59635-3145	\$ 30.97
367 MEADOW VIEW LOOP	EAST HELENA, MT 59635	GILSON MARCY A	367 MEADOW VIEW LOOP	EAST HELENA	MT	59635-3145	\$ 30.97
317 TAM O SHANTER CT	EAST HELENA, MT 59635	CHRISTOPHERSON KURT A & DARCY J	317 TAM O SHANTER CT	EAST HELENA	MT	59635-3373	\$ 30.97
315 TAM O SHANTER CT	EAST HELENA, MT 59635	GOODMAN PAUL	PO BOX 472	EAST HELENA	MT	59635-0472	\$ 30.97
387 MEADOW VIEW LOOP	EAST HELENA, MT 59635	JEWETT NATHAN M	387 MEADOW VIEW LOOP	EAST HELENA	MT	59635-3145	\$ 30.97
311 TAM O SHANTER CT	EAST HELENA, MT 59635	YOUNG-SCHUYLER KURTIS ETAL	311 TAM O SHANTER CT	EAST HELENA	MT	59635-3373	\$ 30.97
384 MEADOW VIEW LOOP	EAST HELENA, MT 59635	WH EAST HELENA 34 LLC	24911 AVENUE STANFORD	SANTA CLARITA	CA	91355-1281	\$ 30.97
308 TAM O SHANTER CT	EAST HELENA, MT 59635	SPRAGUE BRIAN A & BAILEY L	308 TAM O SHANTER CT	EAST HELENA	MT	59635	\$ 30.97
305 SUTHERLAND CT	EAST HELENA, MT 59635	CHRISTENSEN ROGNALD & LORA	305 SUTHERLAND CT	EAST HELENA	MT	59635-3146	\$ 30.97
343 MEADOW VIEW LOOP	EAST HELENA, MT 59635	GIBBONS ERIC & KAYLA	343 MEADOW VIEW LOOP	EAST HELENA	MT	59635-3145	\$ 30.97
317 SUTHERLAND CT	EAST HELENA, MT 59635	MART CAITLIN L & TRAVIS L	317 SUTHERLAND CT	EAST HELENA	MT	59635-3146	\$ 30.97
339 MEADOW VIEW LOOP	EAST HELENA, MT 59635	WINKLEPLECK LARRY & LINDA LOU	339 MEADOW VIEW LOOP	EAST HELENA	MT	59635-3145	\$ 30.97
318 SUTHERLAND CT	EAST HELENA, MT 59635	FORD JASON & KATHY	7743 CANYON FERRY RD	HELENA	MT	59602-8518	\$ 30.97
356 MEADOW VIEW LOOP	EAST HELENA, MT 59635	CHRISTIANSEN TAMARA ETAL	356 MEADOW VIEW LOOP	EAST HELENA	MT	59635-3145	\$ 30.97
360 MEADOW VIEW LOOP	EAST HELENA, MT 59635	MULLIKIN CONNIE	PO BOX 1784	EAST HELENA	MT	59635-1784	\$ 30.97
375 MEADOW VIEW LOOP	EAST HELENA, MT 59635	MICHAEL GLEN & SUSAN L CRAIN DECLARATION OF TRUST	375 MEADOW VIEW LOOP	EAST HELENA	MT	59635-3145	\$ 30.97
379 MEADOW VIEW LOOP	EAST HELENA, MT 59635	WELNA BENJAMIN & KATE	379 MEADOW VIEW LOOP	EAST HELENA	MT	59635-3145	\$ 30.97
302 TAM O SHANTER CT	EAST HELENA, MT 59635	SEIDENSTICKER JENNY & JAMES E	302 TAM O SHANTER CT	EAST HELENA	MT	59635-3373	\$ 30.97
380 MEADOW VIEW LOOP	EAST HELENA, MT 59635	ANTHONY JOHN D	380 MEADOW VIEW LOOP	EAST HELENA	MT	59635	\$ 30.97
313 SUTHERLAND CT	EAST HELENA, MT 59635	BLAZQUEZ ALEXANDER & VICTORIA	3516 SAVANA LN	ALAMEDA	CA	94502-7023	\$ 30.97
351 MEADOW VIEW LOOP	EAST HELENA, MT 59635	THURMOND NANCY MARIE	351 MEADOW VIEW LOOP	EAST HELENA	MT	59635-3145	\$ 30.97
304 SUTHERLAND CT	EAST HELENA, MT 59635	CAMPBELL NICOLE	PO BOX 1844	EAST HELENA	MT	59635-1844	\$ 30.97
363 MEADOW VIEW LOOP	EAST HELENA, MT 59635	WARD NATHANIEL TYLER ETAL	363 MEADOW VIEW LOOP	EAST HELENA	MT	59635-3145	\$ 30.97
368 MEADOW VIEW LOOP	EAST HELENA, MT 59635	TIEFENTHALER NICHOLE & BRADLEY	368 MEADOW VIEW LOOP	EAST HELENA	MT	59635-3145	\$ 30.97
320 TAM O SHANTER CT	EAST HELENA, MT 59635	CRICHTON RYAN E	320 TAM O SHANTER CT	EAST HELENA	MT	59635-3373	\$ 30.97
316 TAM O SHANTER CT	EAST HELENA, MT 59635	COOPER CELENA & BRANDON	316 TOM O SHANTER CT	EAST HELENA	MT	59635-3373	\$ 30.97
309 SUTHERLAND CT	EAST HELENA, MT 59635	BARTHOLOMEW TRAVIS WILLIAM	309 SUTHERLAND CT	EAST HELENA	MT	59635-3146	\$ 30.97
311 SUTHERLAND CT	EAST HELENA, MT 59635	MORRIS NATHAN T & CATHY M	311 SUTHERLAND CT	EAST HELENA	MT	59635-3146	\$ 30.97
338 MEADOW VIEW LOOP	EAST HELENA, MT 59635	CAMBRIDGE JARED PAUL & EMILY MEGAN	338 MEADOW VIEW LOOP	EAST HELENA	MT	59635-3145	\$ 30.97
321 TAM O SHANTER CT	EAST HELENA, MT 59635	GIROLAMI JOHN & SHELLEY	321 TAM O SHANTER CT	EAST HELENA	MT	59635-3373	\$ 30.97
371 MEADOW VIEW LOOP	EAST HELENA, MT 59635	BEATY STEPHEN & SILVER	371 MEADOW VIEW LOOP	EAST HELENA	MT	59635-3145	\$ 30.97
307 TAM O SHANTER CT	EAST HELENA, MT 59635	EDEEN GRACE ETAL	307 TAM O SHANTER CT	EAST HELENA	MT	59635-3373	\$ 30.97
374 MEADOW VIEW LOOP	EAST HELENA, MT 59635	SCHULTZ ROBERT B	374 MEADOW VIEW LOOP	EAST HELENA	MT	59635-3145	\$ 30.97
310 TAM O SHANTER CT	EAST HELENA, MT 59635	KORTH SHAWNA K	PO BOX 5131	HELENA	MT	59604-5131	\$ 30.97
347 MEADOW VIEW LOOP	EAST HELENA, MT 59635	GERHART RACHEL TRUSTEE ETAL	347 MEADOW VIEW LOOP	EAST HELENA	MT	59635	\$ 30.97
344 MEADOW VIEW LOOP	EAST HELENA, MT 59635	ABEL SCOTT & MELISSA	344 MEADOW VIEW LOOP	EAST HELENA	MT	59635-3145	\$ 30.97
348 MEADOW VIEW LOOP	EAST HELENA, MT 59635	KARA J HURST LIVING TRUST	348 MEADOW VIEW LOOP	EAST HELENA	MT	59635-3145	\$ 30.97
314 SUTHERLAND CT	EAST HELENA, MT 59635	POWER CHRISTINA E & ERIC K	314 SUTHERLAND CT	EAST HELENA	MT	59635-3146	\$ 30.97
322 TAM O SHANTER CT	EAST HELENA, MT 59635	PHILLIPS WILLIAM G & JANE S	2089 GREY FOX LN	VIRGINIA BEACH	VA	23456-5219	\$ 30.97
314 TAM O SHANTER CT	EAST HELENA, MT 59635	HANLEY BERNARD T & MARCIA E	314 TAM O SHANTER CT	EAST HELENA	MT	59635-3373	\$ 30.97
315 SUTHERLAND CT	EAST HELENA, MT 59635	JAMISON PAMELA	315 SUTHERLAND CT	EAST HELENA	MT	59635-3146	\$ 30.97
307 SUTHERLAND CT	EAST HELENA, MT 59635	BARTH NANCY A	307 SUTHERLAND CT	EAST HELENA	MT	59635-3146	\$ 30.97
355 MEADOW VIEW LOOP	EAST HELENA, MT 59635	JENSEN MONTY & REBECCA	355 MEADOW VIEW LOOP	EAST HELENA	MT	59635-3145	\$ 30.97
319 SUTHERLAND CT	EAST HELENA, MT 59635	LOEWEN JUSTIN & TAYLOR	319 SUTHERLAND CT	EAST HELENA	MT	59635-3146	\$ 30.97
312 SUTHERLAND CT	EAST HELENA, MT 59635	LASHLEY RONALD II	312 SUTHERLAND CT	EAST HELENA	MT	59635-3146	\$ 30.97
316 SUTHERLAND CT	EAST HELENA, MT 59635	MCCAULEY MACY & HUGH	316 SUTHERLAND CT	EAST HELENA	MT	59635	\$ 30.97
319 TAM O SHANTER CT	EAST HELENA, MT 59635	LEWIS CHRISTOPHER JAMES ETAL	319 TAM O SHANTER CT	EAST HELENA	MT	59635-3373	\$ 30.97
364 MEADOW VIEW LOOP	EAST HELENA, MT 59635	NELSON TYLER & ASHLYN	364 MEADOW VIEW LOOP	EAST HELENA	MT	59635-3145	\$ 30.97
383 MEADOW VIEW LOOP	EAST HELENA, MT 59635	CRAEWALL JAMIE	383 MEADOW VIEW LOOP	EAST HELENA	MT	59635-3145	\$ 30.97
378 MEADOW VIEW LOOP	EAST HELENA, MT 59635	BLOOMQUIST LINDSEY RENEE & JOSEPH WILLIAM	PO BOX 125	WOLF CREEK	MT	59648-0125	\$ 30.97
304 TAM O SHANTER CT	EAST HELENA, MT 59635	MERCADO RAMON E ET AL	304 TAM O SHANTER CT	EAST HELENA	MT	59635	\$ 30.97
318 TAM O SHANTER CT	EAST HELENA, MT 59635	BARNETT DONALD & LELA GAIL	318 TAM O SHANTER CT	EAST HELENA	MT	59635-3373	\$ 30.97
306 TAM O SHANTER CT	EAST HELENA, MT 59635	LUNDY LOREN L & JULIE M TRUSTEES ETAL	26480 W BURNETT RD	BUCKEYE	AZ	85396-9241	\$ 30.97
271 MEADOW VIEW LOOP	EAST HELENA, MT 59635	FRIED KIRK	271 MEADOW VIEW LOOP	EAST HELENA	MT	59635-3158	\$ 30.97
334 MEADOW VIEW LOOP	EAST HELENA, MT 59635	WH EAST HELENA 34 LLC	24911 AVENUE STANFORD	VALENCIA	CA	91355-1281	\$ 30.97
298 MEADOW VIEW LOOP	EAST HELENA, MT 59635	PRICE HUNTER ETAL	298 MEADOW VIEW LOOP	EAST HELENA	MT	59635-3158	\$ 30.97
211 KINROSS CT	EAST HELENA, MT 59635	HANSEN BRANDON & CATHERINE	211 KINROSS CT	EAST HELENA	MT	59635-3163	\$ 30.97
290 MEADOW VIEW LOOP	EAST HELENA, MT 59635	CRANMORE CHASE D & SARAH	290 MEADOW VIEW LOOP	EAST HELENA	MT	59635-3158	\$ 30.97
219 KINROSS CT	EAST HELENA, MT 59635	SHUTEY MARK J & TAMMY L	219 KINROSS CT	EAST HELENA	MT	59635-3163	\$ 30.97
225 KINROSS CT	EAST HELENA, MT 59635	NWAOKEA FOR UGOCHUKWU MAURICE ETAL	225 KINCROSS CT	EAST HELENA	MT	59635	\$ 30.97

Property Address	City, State, Zip Code	Property Owner	Owner Mailing Address	Owner City	Owner State	Owner Zip Code	Yearly Assessment
224 KINROSS CT	EAST HELENA, MT 59635	FOX LISA & REED	224 KINCROSS CT	EAST HELENA	MT	59635	\$ 30.97
313 LOMOND CT	EAST HELENA, MT 59635	BOZU SERGEY & KURA	313 LOMOND CT	EAST HELENA	MT	59635-3151	\$ 30.97
312 LOMOND CT	EAST HELENA, MT 59635	BORLAUG ROGER & SHARON	PO BOX 103	GILDFORD	MT	59525-0103	\$ 30.97
316 LOMOND CT	EAST HELENA, MT 59635	HOFFA JON D & ELIZABETH A TRUSTEES ETAL	3295 VINCES CT	HELENA	MT	59602-6469	\$ 30.97
279 MEADOW VIEW LOOP	EAST HELENA, MT 59635	REEVE KERRY & WENDY SMITH	279 MEADOW VIEW LOOP	EAST HELENA	MT	59635-3158	\$ 30.97
213 KINROSS CT	EAST HELENA, MT 59635	SCHWARTZ REBECCA	213 KINROSS CT	EAST HELENA	MT	59635-3163	\$ 30.97
217 KINROSS CT	EAST HELENA, MT 59635	BREMNER DAVID F & REBECCA A	217 KINROSS CT	EAST HELENA	MT	59635-3163	\$ 30.97
214 KINROSS CT	EAST HELENA, MT 59635	OCHOA DANIEL DAKOTA	214 KINCROSS CT	EAST HELENA	MT	59635	\$ 30.97
305 LOMOND CT	EAST HELENA, MT 59635	HOFFA JON D & ELIZABETH A TRUSTEES ETAL	3295 VINCES CT	HELENA	MT	59602-6469	\$ 30.97
315 LOMOND CT	EAST HELENA, MT 59635	MAKOUTZ JASON & MEGAN	315 LOMOND COURT	EAST HELENA	MT	59635	\$ 30.97
317 LOMOND CT	EAST HELENA, MT 59635	BOREN KAITLIN & JUSTIN C	317 LOMOND COURT	EAST HELENA	MT	59635	\$ 30.97
299 MEADOW VIEW LOOP	EAST HELENA, MT 59635	FRAWLEY PATRICK	299 MEADOW VIEW LOOP	EAST HELENA	MT	59635-3158	\$ 30.97
326 MEADOW VIEW LOOP	EAST HELENA, MT 59635	WH EAST HELENA 34 LLC	24911 AVENUE STANFORD	VALENCIA	CA	91355-1281	\$ 30.97
318 MEADOW VIEW LOOP	EAST HELENA, MT 59635	WH EAST HELENA 34 LLC	24911 AVENUE STANFORD	VALENCIA	CA	91355-1281	\$ 30.97
294 MEADOW VIEW LOOP	EAST HELENA, MT 59635	PEREZ ISAAC	294 MEADOW VIEW LOOP	EAST HELENA	MT	59635-3158	\$ 30.97
210 KINROSS CT	EAST HELENA, MT 59635	THE HOFFA FAMILY TRUST	3295 VINCES CT	HELENA	MT	59602-6469	\$ 30.97
327 MEADOW VIEW LOOP	EAST HELENA, MT 59635	WH EAST HELENA 34 LLC	24911 AVENUE STANFORD	VALENCIA	CA	91355-1281	\$ 30.97
323 MEADOW VIEW LOOP	EAST HELENA, MT 59635	WH EAST HELENA 34 LLC	24911 AVENUE STANFORD	VALENCIA	CA	91355-1281	\$ 30.97
319 MEADOW VIEW LOOP	EAST HELENA, MT 59635	WH EAST HELENA 34 LLC	24911 AVENUE STANFORD	VALENCIA	CA	91355-1281	\$ 30.97
307 LOMOND CT	EAST HELENA, MT 59635	ATWAN ABANOUB & TAYLOR	307 LOMOND CT	EAST HELENA	MT	59635-3151	\$ 30.97
311 LOMOND CT	EAST HELENA, MT 59635	LAVALLEY LYNETTE L	311 LOMOND CT	EAST HELENA	MT	59635-3151	\$ 30.97
295 MEADOW VIEW LOOP	EAST HELENA, MT 59635	DECREVEL JOHNNY & DUSTY	295 MEADOW VIEW LOOP	EAST HELENA	MT	59635-3158	\$ 30.97
312 MEADOW VIEW LOOP	EAST HELENA, MT 59635	WH EAST HELENA 34 LLC	24911 AVENUE STANFORD	VALENCIA	CA	91355-1281	\$ 30.97
306 MEADOW VIEW LOOP	EAST HELENA, MT 59635	WH EAST HELENA 34 LLC	24911 AVENUE STANFORD	VALENCIA	CA	91355-1281	\$ 30.97
300 MEADOW VIEW LOOP	EAST HELENA, MT 59635	POPEVIS CHERYL	300 MEADOW VIEW LOOP	EAST HELENA	MT	59635-3145	\$ 30.97
215 KINROSS CT	EAST HELENA, MT 59635	HOLAHAN WILLIAM & MOLLY	215 KINROSS CT	EAST HELENA	MT	59635-3163	\$ 30.97
292 MEADOW VIEW LOOP	EAST HELENA, MT 59635	JOHNSON CHARDONNAY ETAL	292 MEADOW VIEW LOOP	EAST HELENA	MT	59635-3158	\$ 30.97
226 KINROSS CT	EAST HELENA, MT 59635	LONGTINE DIANE	1008 5TH AVE	HELENA	MT	59601-4444	\$ 30.97
304 MEADOW VIEW LOOP	EAST HELENA, MT 59635	WH EAST HELENA 34 LLC	24911 AVENUE STANFORD	VALENCIA	CA	91355-1281	\$ 30.97
216 KINROSS CT	EAST HELENA, MT 59635	HEATON RILEY & JESSIAH	216 KINCROSS CT	EAST HELENA	MT	59635	\$ 30.97
212 KINROSS CT	EAST HELENA, MT 59635	PLANT JARROD & TAYLOR	212 KINCROSS CT	EAST HELENA	MT	59635	\$ 30.97
218 KINROSS CT	EAST HELENA, MT 59635	SMITH MICHELE DANETTE	218 KINCROSS CT	EAST HELENA	MT	59635	\$ 30.97
206 KINROSS CT	EAST HELENA, MT 59635	NORINE CECILY A	206 KINCROSS COURT	EAST HELENA	MT	59635	\$ 30.97
202 KINROSS CT	EAST HELENA, MT 59635	CAMERON COREY JARON & BROOKE RENE	202 KINROSS CT	EAST HELENA	MT	59635-3163	\$ 30.97
204 KINROSS CT	EAST HELENA, MT 59635	SMITH KORY M ETAL	204 KINROSS CT	EAST HELENA	MT	59635-3163	\$ 30.97
307 MEADOW VIEW LOOP	EAST HELENA, MT 59635	WH EAST HELENA 34 LLC	24911 AVENUE STANFORD	VALENCIA	CA	91355-1281	\$ 30.97
311 MEADOW VIEW LOOP	EAST HELENA, MT 59635	WH EAST HELENA 34 LLC	24911 AVENUE STANFORD	VALENCIA	CA	91355-1281	\$ 30.97
320 LOMOND CT	EAST HELENA, MT 59635	NAKAMURA ROY & SUSAN	320 LOMOND CT	EAST HELENA	MT	59635-3151	\$ 30.97
318 LOMOND CT	EAST HELENA, MT 59635	CARLSON NATHAN & KY'ANNA	318 LOMOND CT	EAST HELENA	MT	59635-3151	\$ 30.97
303 LOMOND CT	EAST HELENA, MT 59635	VISSER PROPERTIES LLC	79 DESERT DR	TOWNSEND	MT	59644-9735	\$ 30.97
291 MEADOW VIEW LOOP	EAST HELENA, MT 59635	WH EAST HELENA 34 LLC	24911 AVENUE STANFORD	VALENCIA	CA	91355-1281	\$ 30.97
287 MEADOW VIEW LOOP	EAST HELENA, MT 59635	VANDONSEL HUNTER & ALEXIS	287 MEADOW VIEW LOOP	EAST HELENA	MT	59635-3158	\$ 30.97
283 MEADOW VIEW LOOP	EAST HELENA, MT 59635	WH EAST HELENA 34 LLC	24911 AVENUE STANFORD	VALENCIA	CA	91355-1281	\$ 30.97
286 MEADOW VIEW LOOP	EAST HELENA, MT 59635	ANDERSON NEIL P & DAWN R	286 MEADOW VIEW LOOP	EAST HELENA	MT	59635-3158	\$ 30.97
220 KINROSS CT	EAST HELENA, MT 59635	MCMILLAN CHAD A & BROOKE	220 KINROSS CT	EAST HELENA	MT	59635	\$ 30.97
208 KINROSS CT	EAST HELENA, MT 59635	BLANK BRANDON & HOLLY MATZ	6150 ROSENDALE RD	EAST HELENA	MT	59635-9774	\$ 30.97
315 MEADOW VIEW LOOP	EAST HELENA, MT 59635	WH EAST HELENA 34 LLC	24911 AVENUE STANFORD	VALENCIA	CA	91355-1281	\$ 30.97
309 LOMOND CT	EAST HELENA, MT 59635	SCHULTZ ELISE M & JOSEPH A	309 LOMOND CT	EAST HELENA	MT	59635-3151	\$ 30.97
306 LOMOND CT	EAST HELENA, MT 59635	KADLEC REBECCA I LEARY & MATTHEW JAMES	306 LOMOND CT	EAST HELENA	MT	59635-3151	\$ 30.97
314 LOMOND CT	EAST HELENA, MT 59635	BANKSTON AUSTIN & SARAH	314 LOMOND CT	EAST HELENA	MT	59635	\$ 30.97
275 MEADOW VIEW LOOP	EAST HELENA, MT 59635	GIESE WENDY ETAL	275 MEADOW VIEW LOOP	EAST HELENA	MT	59635-3158	\$ 30.97
303 MEADOW VIEW LOOP	EAST HELENA, MT 59635	WILCHER ROBERT BOBBY & RACHEL ANN	303 MEADOW VIEW LOOP	EAST HELENA	MT	59635-3145	\$ 30.97
228 MEADOW VIEW LOOP	EAST HELENA, MT 59635	PELLERITI SHERYL L TRUSTEE ETAL	228 MEADOW VIEW LOOP	EAST HELENA	MT	59635-3158	\$ 30.97
202 KARNNEL CT	EAST HELENA, MT 59635	BRIGHTON CARSON JOHN & ELIZABETH	202 KARNNEL CT	EAST HELENA	MT	59635-3154	\$ 30.97
215 MEADOW VIEW LOOP	EAST HELENA, MT 59635	INFINITY HOMES LLC	PO BOX 20174	BILLINGS	MT	59104-0174	\$ 30.97
219 MEADOW VIEW LOOP	EAST HELENA, MT 59635	MULBERRY STEPHANIE & CHRISTOPHER	219 MEADOW VIEW LOOP	EAST HELENA	MT	59635-3158	\$ 30.97
223 MEADOW VIEW LOOP	EAST HELENA, MT 59635	PECK KAYLA K & ANDREW M	223 MEADOW VIEW LOOP	EAST HELENA	MT	59635-3158	\$ 30.97
214 GLENFINNAN CT	EAST HELENA, MT 59635	LEHMAN RYAN	2024 VILLARD AVE APT 1	HELENA	MT	59601-0382	\$ 30.97
226 MEADOW VIEW LOOP	EAST HELENA, MT 59635	HEAREN ANDREW N & THERESA	226 MEADOW VIEW LOOP	EAST HELENA	MT	59635-3158	\$ 30.97
191 MEADOW VIEW LOOP	EAST HELENA, MT 59635	OLIN HOMES MT LLC	9301 NE 117TH AVE	VANCOUVER	WA	98662-2414	\$ 30.97
218 MEADOW VIEW LOOP	EAST HELENA, MT 59635	CHARLTON BRET A ETAL	218 MEADOW VIEW LOOP	EAST HELENA	MT	59635-3158	\$ 30.97

Property Address	City, State, Zip Code	Property Owner	Owner Mailing Address	Owner City	Owner State	Owner Zip Code	Yearly Assessment	
203 MEADOW VIEW LOOP	EAST HELENA, MT 59635	MORGAN CHRISTOPHER JOHN & HEATHER MICHELE	203 MEADOW VIEW LOOP	EAST HELENA	MT	59635-3158	\$	30.97
202 MEADOW VIEW LOOP	EAST HELENA, MT 59635	COLEMAN MONICA LYNN & ERIC WILLIAM	202 MEADOW VIEW LOOP	EAST HELENA	MT	59635-3158	\$	30.97
234 MEADOW VIEW LOOP	EAST HELENA, MT 59635	NETTO TODD WILLIAM	234 MEADOW VIEW LOOP	EAST HELENA	MT	59635-3158	\$	30.97
209 KARNNEL CT	EAST HELENA, MT 59635	GRIFFITH MATTHEW & CHANDRA	6695 MCLEOD LN NE	KEIZER	OR	97303-1977	\$	30.97
208 MEADOW VIEW LOOP	EAST HELENA, MT 59635	BELEY BRYCE L	208 MEADOW VIEW LOOP	EAST HELENA	MT	59635-3158	\$	30.97
253 MEADOW VIEW LOOP	EAST HELENA, MT 59635	MIHM TRISTAN CODY & COURTNEY MARIE	253 MEADOW VIEW LOOP	EAST HELENA	MT	59635-3158	\$	30.97
208 GLENFINNAN CT	EAST HELENA, MT 59635	HENSLER SADIE	2019 LIVINGSTON AVE APT 46	HELENA	MT	59601-3217	\$	30.97
210 GLENFINNAN CT	EAST HELENA, MT 59635	RAE ELIZABETH	1855 EASY ST	HELENA	MT	59601-1173	\$	30.97
196 MEADOW VIEW LOOP	EAST HELENA, MT 59635	VON CLAUSBRUCH CLAUDIUS CRAMER & AIMEE CRAMER	3475 PENNY LN	HELENA	MT	59602-9187	\$	30.97
183 MEADOW VIEW LOOP	EAST HELENA, MT 59635	GEBHARDT DEVELOPMENT LLC	7880 FOWLER LN	BOZEMAN	MT	59718-8314	\$	30.97
199 MEADOW VIEW LOOP	EAST HELENA, MT 59635	STAPP ETHAN R & JENNIE N	199 MEADOW VIEW LOOP	EAST HELENA	MT	59635	\$	30.97
215 GLENFINNAN CT	EAST HELENA, MT 59635	JOHNSON CAMERON	1695 STABLE RD	HELENA	MT	59602-7510	\$	30.97
268 STIRLING LOOP	EAST HELENA, MT 59635	LINTON DENISE	268 STIRLING LOOP	EAST HELENA	MT	59635-3162	\$	30.97
179 MEADOW VIEW LOOP	EAST HELENA, MT 59635	BURKE KIMBERLY & SEAN C	179 MEADOW VIEW LOOP	EAST HELENA	MT	59635-3159	\$	30.97
180 MEADOW VIEW LOOP	EAST HELENA, MT 59635	ERICKSON TANNER A	180 MEADOW VIEW LOOP	EAST HELENA	MT	59635-3159	\$	30.97
214 MEADOW VIEW LOOP	EAST HELENA, MT 59635	MORRIS KAYLA M	214 MEADOW VIEW LOOP	EAST HELENA	MT	59635-3158	\$	30.97
247 MEADOW VIEW LOOP	EAST HELENA, MT 59635	SCUDERI KEVIN J	247 MEADOW VIEW LOOP	EAST HELENA	MT	59635-3158	\$	30.97
218 GLENFINNAN CT	EAST HELENA, MT 59635	LYNN CASSANDRA	3818 BEECHNUT ST APT 16	EAST HELENA	MT	59635-3422	\$	30.97
188 MEADOW VIEW LOOP	EAST HELENA, MT 59635	COVER LEON & ACHINEE	188 MEADOW VIEW LOOP	EAST HELENA	MT	59635-3159	\$	30.97
187 MEADOW VIEW LOOP	EAST HELENA, MT 59635	BUSHNELL PAUL	187 MOUNTAIN VIEW LOOP	EAST HELENA	MT	59635	\$	30.97
222 GLENFINNAN CT	EAST HELENA, MT 59635	KACKLEY AMBER SHANE	2922 VILLAGE RD	HELENA	MT	59602-9595	\$	30.97
210 KARNNEL CT	EAST HELENA, MT 59635	DAY JOYCE A	210 KARNNEL CT	EAST HELENA	MT	59635-3154	\$	30.97
211 GLENFINNAN CT	EAST HELENA, MT 59635	NELSON DEVON	PO BOX 9623	HELENA	MT	59604-9623	\$	30.97
212 KARNNEL CT	EAST HELENA, MT 59635	WOODWELL JOHN M ETAL	212 KARNNEL CT	EAST HELENA	MT	59635-3154	\$	30.97
270 STIRLING LOOP	EAST HELENA, MT 59635	FORSMAN BRYCE ETAL	270 STIRLING LOOP	EAST HELENA	MT	59635-3162	\$	30.97
265 MEADOW VIEW LOOP	EAST HELENA, MT 59635	WOODSON RONALD LEE & THERESA	265 MEADOW VIEW LOOP	EAST HELENA	MT	59635-3158	\$	30.97
259 MEADOW VIEW LOOP	EAST HELENA, MT 59635	MATTFELDT JULI & JAY	259 MEADOW VIEW LOOP	EAST HELENA	MT	59635-3158	\$	30.97
201 KARNNEL CT	EAST HELENA, MT 59635	BALLWEBER TYLER	201 KARNNEL CT	EAST HELENA	MT	59635-3154	\$	30.97
211 MEADOW VIEW LOOP	EAST HELENA, MT 59635	PAPPAS CARTER CHRIS ETAL	211 MEADOW VIEW LOOP	EAST HELENA	MT	59635-3158	\$	30.97
266 MEADOW VIEW LOOP	EAST HELENA, MT 59635	HUFFMAN CHRISTOPHER & THERESA	266 MEADOW VIEW LOOP	EAST HELENA	MT	59635-3158	\$	30.97
205 KARNNEL CT	EAST HELENA, MT 59635	MCLEAN DUSTIN J & KELSEY M	205 KARNNEL CT	EAST HELENA	MT	59635-3154	\$	30.97
195 MEADOW VIEW LOOP	EAST HELENA, MT 59635	COMBS KAYLA J	195 MEADOW VIEW LOOP	EAST HELENA	MT	59635-3159	\$	30.97
268 MEADOW VIEW LOOP	EAST HELENA, MT 59635	RUST HAROLD L IV	268 MEADOW VIEW LOOP	EAST HELENA	MT	59635-3158	\$	30.97
239 MEADOW VIEW LOOP	EAST HELENA, MT 59635	LEHNERT CHRISTIAN STACY & KRISTI MARIE	239 MEADOW VIEW LOOP	EAST HELENA	MT	59635-3158	\$	30.97
207 MEADOW VIEW LOOP	EAST HELENA, MT 59635	PENNELL EVAN SCOTT & ALICIA LYNNE	207 MEADOW VIEW LOOP	EAST HELENA	MT	59635-3158	\$	30.97
208 KARNNEL CT	EAST HELENA, MT 59635	STREIT JILLIEN J & TYLER G	PO BOX 465	CHESTER	MT	59522-0465	\$	30.97
206 GLENFINNAN CT	EAST HELENA, MT 59635	DINWIDDLE DEREK	1840 CHESTNUT ST	HELENA	MT	59601-1116	\$	30.97
213 GLENFINNAN CT	EAST HELENA, MT 59635	REIMUND GABRIELLE	1071 ROAD RUNNER ST UNIT 718	HELENA	MT	59602-0511	\$	30.97
220 GLENFINNAN CT	EAST HELENA, MT 59635	STORM CORAL	220 GLENFINNAN CT	EAST HELENA	MT	59635	\$	30.97
264 MEADOW VIEW LOOP	EAST HELENA, MT 59635	LAKE KYLE C	264 MEADOW VIEW LOOP	EAST HELENA	MT	59635-3158	\$	30.97
211 KARNNEL CT	EAST HELENA, MT 59635	BICKERS BONNIE ETAL	211 KARNNEL CT	EAST HELENA	MT	59635-3154	\$	30.97
230 MEADOW VIEW LOOP	EAST HELENA, MT 59635	TRASLAVINA DEVON & SHELBY	230 MEADOW VIEW LOOP	EAST HELENA	MT	59635-3158	\$	30.97
260 MEADOW VIEW LOOP	EAST HELENA, MT 59635	HARDING SMOKEY ELISE & DEREK	260 MEADOW VIEW LOOP	EAST HELENA	MT	59635-3158	\$	30.97
203 KARNNEL CT	EAST HELENA, MT 59635	MCPAHON MARY ANNE	203 KARNNEL CT	EAST HELENA	MT	59635-3154	\$	30.97
243 MEADOW VIEW LOOP	EAST HELENA, MT 59635	BICKERS LEE MARK	243 MEADOW VIEW LOOP	EAST HELENA	MT	59635-3158	\$	30.97
267 MEADOW VIEW LOOP	EAST HELENA, MT 59635	MCPAHON TANNER	267 MEADOW VIEW LOOP	EAST HELENA	MT	59635-3158	\$	30.97
227 MEADOW VIEW LOOP	EAST HELENA, MT 59635	STINSON CHRISTINE L	227 MEADOW VIEW LOOP	EAST HELENA	MT	59635-3158	\$	30.97
238 MEADOW VIEW LOOP	EAST HELENA, MT 59635	DEGN ZACHARY H & EMILY M	238 MEADOW VIEW LOOP	EAST HELENA	MT	59635-3158	\$	30.97
182 MEADOW VIEW LOOP	EAST HELENA, MT 59635	GREENBERG MARK & ANDREA	182 MEADOW VIEW LOOP	EAST HELENA	MT	59635-3159	\$	30.97
204 KARNNEL CT	EAST HELENA, MT 59635	HEIMES DAVID	PO BOX 7855	HELENA	MT	59604-7855	\$	30.97
176 MEADOW VIEW LOOP	EAST HELENA, MT 59635	PAFFHAUSEN TAMERA L	176 MEADOW VIEW LOOP	EAST HELENA	MT	59635-3159	\$	30.97
233 MEADOW VIEW LOOP	EAST HELENA, MT 59635	GAMBLE DAVID P ETAL	233 MEADOW VIEW LOOP	EAST HELENA	MT	59635-3158	\$	30.97
269 STIRLING LOOP	EAST HELENA, MT 59635	GOODHART KATHARINE ELISE ETAL	269 STIRLING LOOP	EAST HELENA	MT	59635	\$	30.97
206 KARNNEL CT	EAST HELENA, MT 59635	TAYLOR CHARLES P II & BRENDA L	206 KARNNEL CT	EAST HELENA	MT	59635-3154	\$	30.97
212 GLENFINNAN CT	EAST HELENA, MT 59635	HAMILTON NICOLE	5620 CANYON FERRY RD	EAST HELENA	MT	59635-9777	\$	30.97
219 GLENFINNAN CT	EAST HELENA, MT 59635	LOCKETT KATHERINE	219 GLENFINNAN CT	EAST HELENA	MT	59635	\$	30.97
244 STIRLING LOOP	EAST HELENA, MT 59635	TREEFORT INVESTMENTS LLC	3550 BITTERROOT RD	MANHATTAN	MT	59741-8569	\$	30.97
238 STIRLING LOOP	EAST HELENA, MT 59635	BALD EAGLE LAND INC	753 NICOLE ST	HELENA	MT	59601-9700	\$	30.97
260 STIRLING LOOP	EAST HELENA, MT 59635	HIGHLAND MEADOWS LLC	175 N 27TH ST STE 940	BILLINGS	MT	59101-2048	\$	30.97
262 STIRLING LOOP	EAST HELENA, MT 59635	INFINITY HOMES LLC	PO BOX 20174	BILLINGS	MT	59104-0174	\$	30.97
222 STIRLING LOOP	EAST HELENA, MT 59635	R G LIVING TRUST &	222 STIRLING LOOP	EAST HELENA	MT	59635-3162	\$	30.97

Property Address	City, State, Zip Code	Property Owner	Owner Mailing Address	Owner City	Owner State	Owner Zip Code	Yearly Assessment
228 STIRLING LOOP	EAST HELENA, MT 59635	HIGHLAND MEADOWS LLC	175 N 27TH ST STE 940	BILLINGS	MT	59101-2048	\$ 30.97
229 STIRLING LOOP	EAST HELENA, MT 59635	BILLINGS BEST BUILDERS LLC	2059 GLENEAGLES BLVD	BILLINGS	MT	59105-2124	\$ 30.97
221 STIRLING LOOP	EAST HELENA, MT 59635	BILLINGS BEST BUILDERS LLC	2259 GLENEAGLES BLVD	BILLINGS	MT	59105-2020	\$ 30.97
175 MEADOW VIEW LOOP	EAST HELENA, MT 59635	HIGHLAND MEADOWS LLC	175 N 27TH ST STE 940	BILLINGS	MT	59101-2048	\$ 30.97
156 MEADOW VIEW LOOP	EAST HELENA, MT 59635	HIGHLAND MEADOWS LLC	175 N 27TH ST STE 940	BILLINGS	MT	59101-2048	\$ 30.97
257 STIRLING LOOP	EAST HELENA, MT 59635	HIGHLAND MEADOWS LLC	175 N 27TH ST STE 940	BILLINGS	MT	59101-2048	\$ 30.97
240 STIRLING LOOP	EAST HELENA, MT 59635	HIGHLAND MEADOWS LLC	175 N 27TH ST STE 940	BILLINGS	MT	59101-2048	\$ 30.97
230 STIRLING LOOP	EAST HELENA, MT 59635	OLIN HOMES (MT) LLC	9301 NE 117TH AVE	VANCOUVER	WA	98662-2414	\$ 30.97
254 STIRLING LOOP	EAST HELENA, MT 59635	HIGHLAND MEADOWS LLC	175 N 27TH ST STE 940	BILLINGS	MT	59101-2048	\$ 30.97
220 STIRLING LOOP	EAST HELENA, MT 59635	ADVANCED DEVELOPMENT LLC	5059 WUNSCH DR	HELENA	MT	59602-8411	\$ 30.97
210 STIRLING LOOP	EAST HELENA, MT 59635	ALPINE HOME BUILDERS LLC	2800 SPOKANE CREEK RD	EAST HELENA	MT	59635-9724	\$ 30.97
208 STIRLING LOOP	EAST HELENA, MT 59635	HIGHLAND MEADOWS LLC	175 N 27TH ST STE 940	BILLINGS	MT	59101-2048	\$ 30.97
167 MEADOW VIEW LOOP	EAST HELENA, MT 59635	HIGHLAND MEADOWS LLC	175 N 27TH ST STE 940	BILLINGS	MT	59101-2048	\$ 30.97
171 MEADOW VIEW LOOP	EAST HELENA, MT 59635	HIGHLAND MEADOWS LLC	175 N 27TH ST STE 940	BILLINGS	MT	59101-2048	\$ 30.97
205 STIRLING LOOP	EAST HELENA, MT 59635	HELENA AREA HABITAT FOR HUMANITY	PO BOX 459	HELENA	MT	59624-0459	\$ 30.97
243 STIRLING LOOP	EAST HELENA, MT 59635	INFINITY HOME LLC	PO BOX 20174	BILLINGS	MT	59104-0174	\$ 30.97
236 STIRLING LOOP	EAST HELENA, MT 59635	BALD EAGLE LAND INC	753 NICOLE ST	HELENA	MT	59601-9700	\$ 30.97
246 STIRLING LOOP	EAST HELENA, MT 59635	SLAPNICHER JENNIFER & JACOB	246 STIRLING LOOP	EAST HELENA	MT	59635-3162	\$ 30.97
212 STIRLING LOOP	EAST HELENA, MT 59635	ALPINE HOME BUILDERS LLC	2800 SPOKANE CREEK RD	EAST HELENA	MT	59635-9724	\$ 30.97
214 STIRLING LOOP	EAST HELENA, MT 59635	ALPINE HOME BUILDERS LLC	2800 SPOKANE CREEK RD	EAST HELENA	MT	59635-9724	\$ 30.97
204 STIRLING LOOP	EAST HELENA, MT 59635	HELENA AREA HABITAT FOR HUMANITY	PO BOX 459	HELENA	MT	59624-0459	\$ 30.97
158 MEADOW VIEW LOOP	EAST HELENA, MT 59635	HIGHLAND MEADOWS LLC	175 N 27TH ST STE 940	BILLINGS	MT	59101-2048	\$ 30.97
253 STIRLING LOOP	EAST HELENA, MT 59635	OLIN HOMES MT LLC	9301 NE 117TH AVE	VANCOUVER	WA	98662-2414	\$ 30.97
215 STIRLING LOOP	EAST HELENA, MT 59635	GEBHARDT DEVELOPMENT LLC	7535 ROUGHSAWN DR	HELENA	MT	59602-8285	\$ 30.97
174 MEADOW VIEW LOOP	EAST HELENA, MT 59635	BILLINGS BEST BUILDERS LLC	2259 GLENEAGLES BLVD	BILLINGS	MT	59105-2020	\$ 30.97
213 STIRLING LOOP	EAST HELENA, MT 59635	HELENA AREA HABITAT FOR HUMANITY	PO BOX 459	HELENA	MT	59624-0459	\$ 30.97
239 STIRLING LOOP	EAST HELENA, MT 59635	SCHILL DOUG	6916 APPLGATE DR	HELENA	MT	59602-9407	\$ 30.97
258 STIRLING LOOP	EAST HELENA, MT 59635	HIGHLAND MEADOWS LLC	175 N 27TH ST STE 940	BILLINGS	MT	59101-2048	\$ 30.97
266 STIRLING LOOP	EAST HELENA, MT 59635	INFINITY HOME LLC	PO BOX 20174	BILLINGS	MT	59104-0174	\$ 30.97
252 STIRLING LOOP	EAST HELENA, MT 59635	HIGHLAND MEADOWS LLC	175 N 27TH ST STE 940	BILLINGS	MT	59101-2048	\$ 30.97
160 MEADOW VIEW LOOP	EAST HELENA, MT 59635	HIGHLAND MEADOWS LLC	175 N 27TH ST STE 940	BILLINGS	MT	59101-2048	\$ 30.97
259 STIRLING LOOP	EAST HELENA, MT 59635	4 MT HOMES INC	PO BOX 51366	BILLINGS	MT	59105-1361	\$ 30.97
159 MEADOW VIEW LOOP	EAST HELENA, MT 59635	INFINITY HOME LLC	PO BOX 20174	BILLINGS	MT	59104-0174	\$ 30.97
245 STIRLING LOOP	EAST HELENA, MT 59635	HIGHLAND MEADOWS LLC	175 N 27TH ST STE 940	BILLINGS	MT	59101-2048	\$ 30.97
232 STIRLING LOOP	EAST HELENA, MT 59635	GEBHARDT DEVELOPMENT LLC	7535 ROUGHSAWN DR	HELENA	MT	59602-8285	\$ 30.97
248 STIRLING LOOP	EAST HELENA, MT 59635	HIGHLAND MEADOWS LLC	175 N 27TH ST STE 940	BILLINGS	MT	59101-2048	\$ 30.97
250 STIRLING LOOP	EAST HELENA, MT 59635	HIGHLAND MEADOWS LLC	175 N 27TH ST STE 940	BILLINGS	MT	59101-2048	\$ 30.97
242 STIRLING LOOP	EAST HELENA, MT 59635	TREEFORT INVESTMENTS LLC	3550 BITTERROOT RD	MANHATTAN	MT	59741-8569	\$ 30.97
218 STIRLING LOOP	EAST HELENA, MT 59635	GEBHARDT DEVELOPMENT LLC	7535 ROUGHSAWN DR	HELENA	MT	59602-8285	\$ 30.97
224 STIRLING LOOP	EAST HELENA, MT 59635	INFINITY HOME LLC	PO BOX 20174	BILLINGS	MT	59104-0174	\$ 30.97
226 STIRLING LOOP	EAST HELENA, MT 59635	HIGHLAND MEADOWS LLC	175 N 27TH ST STE 940	BILLINGS	MT	59101-2048	\$ 30.97
219 STIRLING LOOP	EAST HELENA, MT 59635	HIGHLAND MEADOWS LLC	175 N 27TH ST STE 940	BILLINGS	MT	59101-2048	\$ 30.97
172 MEADOW VIEW LOOP	EAST HELENA, MT 59635	HIGHLAND MEADOWS LLC	175 N 27TH ST STE 940	BILLINGS	MT	59101-2048	\$ 30.97
217 STIRLING LOOP	EAST HELENA, MT 59635	GEBHARDT DEVELOPMENT LLC	7535 ROUGHSAWN DR	HELENA	MT	59602-8285	\$ 30.97
163 MEADOW VIEW LOOP	EAST HELENA, MT 59635	INFINITY HOME LLC	PO BOX 20174	BILLINGS	MT	59104-0174	\$ 30.97
251 STIRLING LOOP	EAST HELENA, MT 59635	OLIN HOMES MT LLC	9301 NE 117TH AVE	VANCOUVER	WA	98662-2414	\$ 30.97
155 MEADOW VIEW LOOP	EAST HELENA, MT 59635	HIGHLAND MEADOWS LLC	175 N 27TH ST STE 940	BILLINGS	MT	59101-2048	\$ 30.97
225 STIRLING LOOP	EAST HELENA, MT 59635	4 MT HOMES INC	PO BOX 51366	BILLINGS	MT	59105-1361	\$ 30.97
237 STIRLING LOOP	EAST HELENA, MT 59635	HIGHLAND MEADOWS LLC	175 N 27TH ST STE 940	BILLINGS	MT	59101-2048	\$ 30.97
249 STIRLING LOOP	EAST HELENA, MT 59635	INFINITY HOME LLC	PO BOX 20174	BILLINGS	MT	59104-0174	\$ 30.97
256 STIRLING LOOP	EAST HELENA, MT 59635	HIGHLAND MEADOWS LLC	175 N 27TH ST STE 940	BILLINGS	MT	59101-2048	\$ 30.97
216 STIRLING LOOP	EAST HELENA, MT 59635	ALPINE HOME BUILDERS LLC	2800 SPOKANE CREEK RD	EAST HELENA	MT	59635-9724	\$ 30.97
264 STIRLING LOOP	EAST HELENA, MT 59635	INFINITY HOMES LLC	PO BOX 20174	BILLINGS	MT	59104-0174	\$ 30.97
231 STIRLING LOOP	EAST HELENA, MT 59635	GEBHARDT GEORGE	18 N FORK RD	TOWNSEND	MT	59644-9640	\$ 30.97
265 STIRLING LOOP	EAST HELENA, MT 59635	4 MT HOMES INC	PO BOX 51366	BILLINGS	MT	59105-1361	\$ 30.97
241 STIRLING LOOP	EAST HELENA, MT 59635	HIGHLAND MEADOWS LLC	175 N 27TH ST STE 940	BILLINGS	MT	59101-2048	\$ 30.97

Total Yearly Assessment: \$ 7,401.60



Exhibit C - Phase 1 Street Light Cost

August 23, 2020

Highland Meadows LLC
175 N 27th St Suite 900
Billings, MT 59101

Re: Request for Street Lighting at Highland Meadows Subdivision Phase I (5 Lights)

In response to your recent inquiry for service, we have an estimated cost listed below. This estimate is based on information provided on the Utility Plan and confirmed by Greg Wirth from Stahly Engineering on 8//21/2020, no frost, machine clean up only, and is valid for the next four months.

MONTHLY LIGHTING COST \$ 149.48

**Based on current rates and is subject to revision by the Public Service Commission of Montana.*

If you plan to move forward with this lease light installation, contact our New Construction Department as soon as possible. The following items must be completed before the job is engineered and scheduled:

- ✓ Obtain necessary utility easements.
- ✓ Sign a yard light contract.
- ✓ Clear access: clear trees, remove debris and other material from service route, & complete dirt work to grade.

Normally it takes eight to twelve weeks to install the lease lights after the above items are completed. When **all** of the above items are complete, please contact our New Construction Department for an expected time frame for the job to be scheduled.

I can be reached at **406-431-9849** if you have questions concerning the installation the leased lights.

Sincerely,

Curt Deppmeier

Northwestern Energy



Exhibit C - Phase 2 Street Light Cost

March 8, 2021

Highland Meadows LLC
175 N 27th St Suite 900
Billings, MT 59101

Re: Request for Street Lighting at Highland Meadows Subdivision Phase II (4 Lights)

In response to your recent inquiry for service, we have an estimated cost listed below. This estimate is based on information provided on the Utility Plan and confirmed by Greg Wirth from Stahly Engineering in January 2021, no frost, machine clean up only, and is valid for the next four months.

MONTHLY LIGHTING COST \$ 142.63

**Based on current rates and is subject to revision by the Public Service Commission of Montana.*

If you plan to move forward with this lease light installation, contact our New Construction Department as soon as possible. The following items must be completed before the job is engineered and scheduled:

- ✓ Obtain necessary utility easements.
- ✓ Sign a yard light contract.
- ✓ Clear access: clear trees, remove debris and other material from service route, & complete dirt work to grade.

Normally it takes eight to twelve weeks to install the lease lights after the above items are completed. When **all** of the above items are complete, please contact our New Construction Department for an expected time frame for the job to be scheduled.

I can be reached at **406-431-9849** if you have questions concerning the installation the leased lights.

Sincerely,

Curt Deppmeier

Northwestern Energy



Exhibit C - Phase 3 Street Light Cost

March 21, 2022

Highland Meadows LLC
175 N 27th ST Suite 900
Billings, MT 59101

Re: Request for Street Lighting at Highland Meadows Subdivision Phase III (6 Lights)

In response to your recent inquiry for service, we have an estimated cost listed below. This estimate is based on information provided on the Utility Plan and confirmed by Greg Wirth from Stahly Engineering in March 2022, no frost, machine clean up only, and is valid for the next four months.

MONTHLY LIGHTING COST \$ 205.64

**Based on current rates and is subject to revision by the Public Service Commission of Montana.*

If you plan to move forward with this lease light installation, contact our New Construction Department as soon as possible. The following items must be completed before the job is engineered and scheduled:

- ✓ Obtain necessary utility easements.
- ✓ Sign a yard light contract.
- ✓ Clear access: clear trees, remove debris and other material from service route, & complete dirt work to grade.

Normally it takes eight to twelve weeks to install the lease lights after the above items are completed. When **all** of the above items are complete, please contact our New Construction Department for an expected time frame for the job to be scheduled.

I can be reached at **406-431-9849** if you have questions concerning the installation the leased lights.

Sincerely,

Curt Deppmeier

Northwestern Energy



Exhibit C - Phase 4 Street Light Cost

February 19, 2024

HIGHLAND MEADOWS LLC
175 N 27TH ST, SUITE 900
BILLINGS, MT. 59101

Re: Request for Street Lighting at Highland Meadows Subdivision Phase IV (3 Lights)

In response to your recent inquiry for service, we have an estimated cost listed below. This estimate is based on information provided on the Utility Plan and confirmed by Greg Wirth from Stahly Engineering in March 2022, no frost, machine clean up only, and is valid for the next four months.

MONTHLY LIGHTING COST \$ 119.05

**Based on current rates and is subject to revision by the Public Service Commission of Montana.*

If you plan to move forward with this lease light installation, contact our New Construction Department as soon as possible. The following items must be completed before the job is engineered and scheduled:

- ✓ Obtain necessary utility easements.
- ✓ Sign a yard light contract.
- ✓ Clear access: clear trees, remove debris and other material from service route, & complete dirt work to grade.

Normally it takes eight to twelve weeks to install the lease lights after the above items are completed. When **all** of the above items are complete, please contact our New Construction Department for an expected time frame for the job to be scheduled.

I can be reached at **406-594-8926** if you have questions concerning the installation the leased lights.

Sincerely,

Kyle Woodlief

Northwestern Energy

CITY OF EAST HELENA
306 E MAIN ST / PO BOX 1170
EAST HELENA, MT 59635
(406) 227-5321

ORIGINAL COUNCIL MEETING DATE: 08/05/2025

Agenda item:

Resolution to Modify Existing Lighting District No. 201

From:

City Attorney Elverum

Initiated by City: ☒ YES ☐ NO (check one)

Department:

Roads & Streets

Presented by:

Council President Dahl

Action requested:

Approve/Deny/Table

PLEASE PROVIDE A NARRATIVE BACKGROUND OF THE PROPOSED AGENDA ITEM:

Vigilante Subdivision Lighting District 201

Attachment:

Resolution 625

Attachments: ☒ YES ☐ NO (check one)

Date submitted:

RECOMMENDATIONS:

Approve for agenda:

☐ YES

☐ NO

Initial:

Referred to Dept. Head for resolution:

☐ YES

☐ NO

Referred to _____:

☐ YES

☐ NO

Agenda requests must be submitted to East Helena City Hall by noon the Wednesday prior to the Tuesday council meeting.

RESOLUTION NO. 625

A RESOLUTION MODIFYING SPECIAL IMPROVEMENT LIGHTING DISTRICT NO. 201 IN THE CITY OF EAST HELENA, MONTANA.

WHEREAS, §7-12-4301, et seq., MCA, allowed the City of East Helena to create special improvement lighting district No. 201; and

WHEREAS, §7-12-4351, et seq., MCA, authorizes the City of East Helena to modify an existing special improvement lighting district by changing the number and spacing of lights and making other modifications required by the public interest and conveniences; and

WHEREAS, §7-12-4335, et seq., MCA, authorizes the City of East Helena to change by resolution the boundaries of Special Improvement Lighting District No. 201 along the arterial streets and avenues in Phases I, II, and III of the Vigilante Subdivision; and

WHEREAS, it appears to be in the best interests of the City of East Helena, and the inhabitants thereof, specifically the inhabitants of the area to be known as Special Improvement Lighting District No. 201, that said Special Improvement Lighting District No. 201 be modified.

WHEREAS, a public hearing was held on this matter on the 5th day of August, 2025, in the City Council Chambers at 306 East Main Street in East Helena, Montana.

BE IT RESOLVED BY THE CITY COUNCIL OF THE CITY OF EAST HELENA, MONTANA:

SECTION 1. That the City Council of the City of East Helena, Montana, hereby modifies Special Improvement Lighting District No. 201 in the City of East Helena for the purpose of installing and maintaining street lighting in Phase III of Vigilante Subdivision, more particularly described on Exhibit “A” attached hereto and by this reference made a part hereof.

SECTION 2. The boundaries of said Special Improvement Lighting District No. 201 shall be as described on Exhibit “B” attached hereto.

SECTION 3. The general character of the improvements and modifications to be made in said district is the installation and maintenance of an additional seven (7) lighting units with underground wiring, fiberglass poles with 16-foot mounting heights, and an additional seven (7) luminaries with 42-watt LED lamps in Phase III of Vigilante Subdivision.

SECTION 4. The estimated total cost of maintaining said improvements, supplying electrical energy, and administration therefor for the first year is \$9,765.24, with the estimated annual cost being \$143.61 per property owned, said amount to be paid by the property owners. That amount includes the additional assessment to be charged by the City to establish a cash reserve and recover any costs of the district incurred prior to receipt of the first assessments.

SECTION 5. All the costs of installing and maintaining said lighting shall be borne by the owners of the property embraced within the boundaries of said district.

Passed, by the City Council of the City of East Helena, Montana, and approved by the Mayor this 5th day of August, 2025.

Kelly Harris, Mayor

ATTEST:

Amy Thorngren, City Clerk/Treasurer



LEGEND



PARCELS



SID BOUNDARY



Map Created by:
**ROBERT PECCIA &
ASSOCIATES**
www.rpa-hln.com

125 0 125 250
(SCALE IN FEET)

VIGILANTE SUBDIVISION
PHASE ONE, TWO AND THREE LIGHTING DISTRICT
8/5/25 Council Packet Page 18 **EXHIBIT A**

Exhibit B - Assessment

Property Address	City, State, Zip Code	Property Owner	Owner Mailing Address	Address Line 2	Owner City	Owner State	Owner Zip Code	Yearly Assessment
2800 ASHLEY AVE	EAST HELENA, MT 59635	BRUNO DANIEL & KACI L GAUB-	2800 ASHLEY AVE		EAST HELENA	MT	59635-3368	\$ 143.61
3277 LIZZY ST	EAST HELENA, MT 59635	ROCK ENTERPRISES INC	260 LYNDALDE LN		BUTTE	MT	59701-7519	\$ 143.61
2804 ASHLEY AVE	EAST HELENA, MT 59635	CARSON GEOFF & KELI	2804 ASHLEY AVE		EAST HELENA	MT	59635-3368	\$ 143.61
2889 ASHLEY AVE	EAST HELENA, MT 59635	TOLSON TERENCE & BAILEY	2889 ASHLEY AVE		EAST HELENA	MT	59635-3370	\$ 143.61
2853 ASHLEY AVE	EAST HELENA, MT 59635	HOWELL TEDI	2853 ASHLEY AVE		EAST HELENA	MT	59635-3370	\$ 143.61
2856 ASHLEY AVE	EAST HELENA, MT 59635	MCNICOL JAMES A & CYNTHIA	2856 ASHLEY AVE		EAST HELENA	MT	59635-3368	\$ 143.61
2868 ASHLEY AVE	EAST HELENA, MT 59635	PELTOMAA TAMARA J	PO BOX 940		EAST HELENA	MT	59635-0940	\$ 143.61
2871 ASHLEY AVE	EAST HELENA, MT 59635	MOHLER JASON E & JACKIE F	2871 ASHLEY AVE		EAST HELENA	MT	59635-3370	\$ 143.61
2859 ASHLEY AVE	EAST HELENA, MT 59635	ZIMMERMAN CONSTRUCTION LLC	PO BOX 9786		HELENA	MT	59604-9786	\$ 143.61
2862 ASHLEY AVE	EAST HELENA, MT 59635	CHANDLER BLAKE & TERESA JOAN	2862 ASHLEY AVE		EAST HELENA	MT	59635-3368	\$ 143.61
2849 SARAH AVE	EAST HELENA, MT 59635	WELLS RICHARD & MARY JO	2849 SARAH AVE		EAST HELENA	MT	59635	\$ 143.61
3270 LIZZY ST	EAST HELENA, MT 59635	MONGOVEN TARALEE ETAL	3270 LIZZY ST		EAST HELENA	MT	59635-3508	\$ 143.61
2837 SARAH AVE	EAST HELENA, MT 59635	WOLLITZ LISA & JEREMY	2837 SARAH AVE		EAST HELENA	MT	59635-4140	\$ 143.61
ASHLEY AVE	EAST HELENA, MT 59635	VIGILANTE DEVELOPERS LLC	3440 CENTENNIAL DR		HELENA	MT	59601-9769	\$ 143.61
2835 ASHLEY AVE	EAST HELENA, MT 59635	HANSEN EUGENE & LEE	2835 ASHLEY AVE		EAST HELENA	MT	59635-3370	\$ 143.61
3286 ASHLEY AVE	EAST HELENA, MT 59635	DAVIS DOYLE	806 STANLEY ST		HELENA	MT	59601-3306	\$ 143.61
2820 ASHLEY AVE	EAST HELENA, MT 59635	GROVOM FAMILY TRUST	2820 ASHLEY AVE		EAST HELENA	MT	59635-3368	\$ 143.61
2810 ASHLEY AVE	EAST HELENA, MT 59635	NELSON JON WAYNE	2810 ASHLEY AVE		EAST HELENA	MT	59635-3368	\$ 143.61
2817 ASHLEY AVE	EAST HELENA, MT 59635	MARTINEZ KURT MICHAEL & SHANNON ANN	2817 ASHLEY AVE		EAST HELENA	MT	59635-3370	\$ 143.61
2823 ASHLEY AVE	EAST HELENA, MT 59635	TENNANT JAYLENE	2823 ASHLEY ST		EAST HELENA	MT	59635	\$ 143.61
2801 ASHLEY AVE	EAST HELENA, MT 59635	RUSOFF DAVID & KELLY & JOHN	173 BRIARWOOD LN		HELENA	MT	59601-0174	\$ 143.61
3278 LIZZY ST	EAST HELENA, MT 59635	OTOLLS MARISA	3278 LIZZY ST		EAST HELENA	MT	59635-3508	\$ 143.61
2824 ASHLEY AVE	EAST HELENA, MT 59635	MCGILL JOSEPH & LINDSEY	2824 ASHLEY AVE		EAST HELENA	MT	59635-3368	\$ 143.61
2814 ASHLEY AVE	EAST HELENA, MT 59635	HANSING JAMI	2814 ASHLEY AVE		EAST HELENA	MT	59635-3368	\$ 143.61
2883 ASHLEY AVE	EAST HELENA, MT 59635	BATES SZYMANSKI MARIA	2883 ASHLEY AVE		EAST HELENA	MT	59635-3370	\$ 143.61
2865 ASHLEY AVE	EAST HELENA, MT 59635	SPI ASHLEY LLC	1403 PUTTERS PL		FREELAND	WA	98249-9648	\$ 143.61
2811 ASHLEY AVE	EAST HELENA, MT 59635	DELISE SEAN R & CARLY E	2811 ASHLEY AVE		EAST HELENA	MT	59635-3370	\$ 143.61
2805 ASHLEY AVE	EAST HELENA, MT 59635	BROWN JULIE ANN	2805 ASHLEY AVE		EAST HELENA	MT	59635-3370	\$ 143.61
3269 LIZZY ST	EAST HELENA, MT 59635	VOEGELY RYAN & STEPHANIE	3269 LIZZY ST		EAST HELENA	MT	59635	\$ 143.61
3285 LIZZY ST	EAST HELENA, MT 59635	KING LINDSEY & COLTON	3285 LIZZY ST		EAST HELENA	MT	59635-3508	\$ 143.61
2895 ASHLEY AVE	EAST HELENA, MT 59635	COLEMAN ALLISON & JOHN	2895 ASHLEY AVE		EAST HELENA	MT	59635-3370	\$ 143.61
2877 ASHLEY AVE	EAST HELENA, MT 59635	LUCERO JOSHUA & JILL	2877 ASHLEY AVE		EAST HELENA	MT	59635-3370	\$ 143.61
2841 ASHLEY AVE	EAST HELENA, MT 59635	HUOT ANTHONY & JULIANNE	2841 ASHLEY AVE		EAST HELENA	MT	59635-3370	\$ 143.61
2847 ASHLEY AVE	EAST HELENA, MT 59635	WILSON KYLE P	2847 ASHLEY AVE		EAST HELENA	MT	59635	\$ 143.61
2829 ASHLEY AVE	EAST HELENA, MT 59635	MOLENDAD ADAM W ET AL	2829 ASHLEY AVENUE		EAST HELENA	MT	59635	\$ 143.61
2802 SARAH AVE	EAST HELENA, MT 59635	GIACOMELLI SADIE & PAULO	2802 SARAH AVE		EAST HELENA	MT	59635-4140	\$ 143.61
2834 SARAH AVE	EAST HELENA, MT 59635	BENNETT LYNNE MARIE	2834 SARAH AVE		EAST HELENA	MT	59635-4140	\$ 143.61
2822 SARAH AVE	EAST HELENA, MT 59635	UMSTED TROY & KERSTIE	2822 SARAH AVE		EAST HELENA	MT	59635-4140	\$ 143.61
2816 SARAH AVE	EAST HELENA, MT 59635	PFISTERER ROEY & CHRISTINA	2816 SARAH AVE		EAST HELENA	MT	59635-4140	\$ 143.61
2813 SARAH AVE	EAST HELENA, MT 59635	DAY JAMES R & CHERYL L	2813 SARAH AVE		EAST HELENA	MT	59635-4140	\$ 143.61
2801 SARAH AVE	EAST HELENA, MT 59635	WIDHALM KELLI & MATTHEW	2801 SARAH AVE		EAST HELENA	MT	59635-4140	\$ 143.61
2846 SARAH AVE	EAST HELENA, MT 59635	KESSLER BRIAN	2846 SARAH AVE		EAST HELENA	MT	59635-4140	\$ 143.61
2831 SARAH AVE	EAST HELENA, MT 59635	STROMBERG KEITH HOWARD ORVIL & JOCELYN CRYSTAL	2831 SARAH AVE		EAST HELENA	MT	59635-4140	\$ 143.61
2819 SARAH AVE	EAST HELENA, MT 59635	WILLERFORD SUZY	2819 SARAH AVE		EAST HELENA	MT	59635-4140	\$ 143.61
2828 SARAH AVE	EAST HELENA, MT 59635	PUGH KATIE ETAL	2828 SARAH AVE		EAST HELENA	MT	59635-4140	\$ 143.61
2808 SARAH AVE	EAST HELENA, MT 59635	AUKER JENNIFER & DAVID	2808 SARAH AVE		EAST HELENA	MT	59635-4140	\$ 143.61
2807 SARAH AVE	EAST HELENA, MT 59635	JOKI ROBERT JOSEPH & JENNA LOUISE	2807 SARAH AVE		EAST HELENA	MT	59635-4140	\$ 143.61
2825 SARAH AVE	EAST HELENA, MT 59635	DANIELSON REED ETAL	C/O MARK MATTHEW MOZZONI & PORTIA MARIA ANDERSON	2825 SARAH AVE	EAST HELENA	MT	59635	\$ 143.61
2900 ASHLEY AVE	EAST HELENA, MT 59635	VIGILANTE DEVELOPERS LLC	2785 ELKVIEW RD		EAST HELENA	MT	59635-3045	\$ 143.61
2878 ASHLEY AVE	EAST HELENA, MT 59635	WAGNER COREY & LEXI	2878 ASHLEY AVE		EAST HELENA	MT	59635-3368	\$ 143.61
2852 SARAH AVE	EAST HELENA, MT 59635	ZIMMERMAN CONSTRUCTION LLC	PO BOX 9786		HELENA	MT	59604-9786	\$ 143.61
2867 SARAH AVE	EAST HELENA, MT 59635	LEUTHARD BEN	4712 BAJA RD		HELENA	MT	59602-9668	\$ 143.61
2888 ASHLEY AVE	EAST HELENA, MT 59635	GEBHARDT DEVELOPMENT LLC	7535 ROUGHSAWN DR		HELENA	MT	59602-8285	\$ 143.61
2879 SARAH AVE	EAST HELENA, MT 59635	VIGILANTE DEVELOPERS LLC	2785 ELKVIEW RD		EAST HELENA	MT	59635-3045	\$ 143.61
2892 ASHLEY AVE	EAST HELENA, MT 59635	RISMON WENDY J	2892 ASHLEY AVE		EAST HELENA	MT	59635-3368	\$ 143.61
2884 ASHLEY AVE	EAST HELENA, MT 59635	ZIMMERMAN CONSTRUCTION LLC	PO BOX 9786		HELENA	MT	59604-9786	\$ 143.61
2864 SARAH AVE	EAST HELENA, MT 59635	TRENARY MARK & GAYLE	2864 SARAH AVE		EAST HELENA	MT	59635-4140	\$ 143.61
2896 ASHLEY AVE	EAST HELENA, MT 59635	DANKERS BRIAN & SHERRI	2896 ASHLEY AVE		EAST HELENA	MT	59635-3368	\$ 143.61
2895 SARAH AVE	EAST HELENA, MT 59635	SPEARSON JAKE	2785 ELKVIEW RD		EAST HELENA	MT	59635-3045	\$ 143.61
2874 ASHLEY AVE	EAST HELENA, MT 59635	HARMS GAIL S ETAL	2874 ASHLEY AVE		EAST HELENA	MT	59635-3368	\$ 143.61
2885 SARAH AVE	EAST HELENA, MT 59635	HOULE JOSEF	2885 SARAH AVE		EAST HELENA	MT	59635-4140	\$ 143.61
2865 SARAH AVE	EAST HELENA, MT 59635	GEBHARDT DEVELOPMENT LLC	7535 ROUGHSAWN DR		HELENA	MT	59602-8285	\$ 143.61
2870 SARAH AVE	EAST HELENA, MT 59635	VIGILANTE DEVELOPERS LLC	2785 ELKVIEW RD		EAST HELENA	MT	59635-3045	\$ 143.61
2858 SARAH AVE	EAST HELENA, MT 59635	KIRICHENKO YEVEGENLY & TAMARA	2858 SARAH AVE		EAST HELENA	MT	59635-4140	\$ 143.61
2889 SARAH AVE	EAST HELENA, MT 59635	BULLSEYE CONSTRUCTION INC	PO BOX 4938		HELENA	MT	59604-4938	\$ 143.61
2855 SARAH AVE	EAST HELENA, MT 59635	PETERSON TUCKER & HEATHER	2855 SARAH AVE		EAST HELENA	MT	59635-4140	\$ 143.61
2873 SARAH AVE	EAST HELENA, MT 59635	SCHWEITZER LENNY	921 LODESTAR RD		HELENA	MT	59602-7599	\$ 143.61
2861 SARAH AVE	EAST HELENA, MT 59635	STONE KAYANN V ETAL	2861 SARAH AVE		EAST HELENA	MT	59635-4140	\$ 143.61

Total Yearly Assessment: \$ 9,765.24

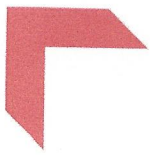


EXHIBIT C - PHASE 1 STREET LIGHT COST

June 9, 2020

Vigilante Developers LLC
Jerry Kittson
3275 Trerise
East Helena, MT 59635

Re: Request for street lighting in Vigilante Major Subdivision Phase 1, East Helena, MT

In response to your recent inquiry for service, we have an estimated cost listed below. This estimate is based on information provided by you, no ground frost, machine clean up only, and is valid till **10/02/2020**.

MONTHLY STREET LIGHT COST: \$418.55

**Based on current rates and is subject to revision by the Public service commission of Montana.*

If you plan to move forward with construction, contact the New Construction Department as soon as possible. The following items must be completed before the job is engineered and scheduled:

- Obtain any necessary utility easements
- Sign and return the Lighting Customer Agreement.
- Clear access: clear trees, remove debris and other material from service route, and complete dirt work to subgrade.

When **all** of the above items are complete, please contact our New Construction Department for an expected time frame for the job to be scheduled.

To ensure work is completed in accordance with your construction schedule, keep in contact with the New Construction Department at **1-833-672-8453 (1-83-FOR-BUILD)**, **select option 2 and then enter project site zip code, or 1-888-467-2669**. We are ready to answer specific questions about your project and/or provide the necessary information to keep your project on schedule. *New Service Guides* are available in our office for you to stop by and pick up *or* one will be mailed if you call and ask.

Sincerely,

Evan Griffiths
NorthWestern Energy
Construction Department
Helena Division



EXHIBIT C - PHASE 2 STREET LIGHT COST

March 8, 2021

Vigilante Developers LLC
Jerry Kittson
3275 Trerise Rd
East Helena, MT 59635



Re: Request for Street Lighting in Vigilante Major Subdivision Phase 2, East Helena, MT

In response to your recent inquiry for service, we estimated the following costs. This estimate is based on information provided by you, considers **no ground frost**, area cleaned up by machine only, and is valid to **06/22/2021**.

MONTHLY STREET LIGHT COST: \$ 158.64

**Based on current rates and is subject to revision by the Public Service Commission of Montana.*

If you plan to move forward with this construction, please contact the New Construction Department as soon as possible. The following items must be completed before the job is engineered and scheduled:

- Obtain necessary utility easements.
- *Sign and return the Lighting Customer Agreement.*
- Clear access: clear trees, remove debris and other material from service route, & complete dirt work to grade.

When **all** of the above items are complete, please contact our New Construction Department for an expected time frame for the job to be scheduled.

To ensure work is completed in accordance with your construction schedule, keep in contact with the New Construction Department at **1-833-672-8453 (1-83-FOR-BUILD, select option 2 and then enter project site zip code) or 1-888-467-2669**. We are ready to answer specific questions about your project and/or provide the necessary information to keep your project on schedule. New Service Guides are available in our office, and can be obtained by picking one up or call if you would like one mailed to you.

Sincerely,

Evan Griffiths
NorthWestern Energy
Construction Department
Helena Division

EXHIBIT C - PHASE 3 STREET LIGHT COST



Notification # 340165021
Customer #1116371

CUSTOMER AGREEMENT

This Customer Agreement (the "Agreement") is made and entered into effective as of 01/28/2022 by and between NorthWestern Energy (the "Company") and VIGILANTE DEVELOPERS LLC (the "Customer"). Sometimes in this Agreement, Company and Customer are collectively referred to as "Parties" or individually as a "Party." Capitalized terms have the meaning set forth in NorthWestern Energy's Electric Tariff and the NorthWestern Energy Natural Gas Tariff (collectively the "Tariffs" and individually the "Gas Tariff" or "Electric Tariff"), which sets forth service, installation and contribution rules and regulations established by the Montana Public Service Commission (the "MPSC"). The Tariffs are available for review at <http://www.northwesternenergy.com/residential-services/how-to-read-your-bill/tariffs-and-rates/montana-tariff-s-and-rates>.

RECITALS

WHEREAS, Customer applied for natural gas or electrical service from the Company; and

WHEREAS, in accordance with the Tariffs, Customer must execute this Agreement and contribute to the cost of installing the facilities required to provide service to Customer's premises because the distance of the new service line is greater than the permitted free extension allowance;

NOW, THEREFORE, in consideration of the covenants and conditions contained in this Agreement, the Parties agree as follows:

AGREEMENT

1. SERVICE AND CONTRIBUTION REQUIREMENTS.

The Company agrees to install, operate and maintain facilities generally described as Lighting - Street Light and is specifically described in Quote 25122882, which is incorporated herein by this reference (the "Quote"), to serve Customer at VIGILANTE SUBD PHASE 3 STREET LIGHT, EAST HELENA, MT in accordance with the requirements of the Tariffs. Customer agrees to comply with the terms and conditions of this Agreement and remit to Company the total contribution of

\$ 0.00, which may include a federal tax surcharge and administrative/engineering fees and is more fully described as follows:

1.1 Advance. In consideration of the Company's agreement to install facilities, Customer agrees to pay an Advance in the sum of \$ 0.00 for construction of the facilities identified in the Quote.

ELECTRICAL

- ☐ Single Family Residential
(Electrical Tariff 6-2)
- ☐ General Service or Non-Single Residential
(Electrical Tariff Rule 6-2)
- ☐ Loads of Uncertain Duration
(Electrical Tariff Rule 5-7)
- ☐ New Subdivision or Housing Project
(Electrical Tariff Rule 6-7)
- ☒ Electric Lighting
(Electrical Tariff ELDS-1)

NATURAL GAS

- ☐ Residential/Other Core Customers
(Gas Tariff Rule 6-2)
- ☐ New Subdivision or Housing Project
(Gas Tariff Rule 6-6)
- ☐ Loads of Uncertain Duration
(Gas Tariff Rule 5-7)

For clarification, an "Advance" is a refundable contribution to the installation costs of the Company's facilities, and is made by the applicant prior to the initial installation. A portion of that advance, up to but not exceeding the full amount, may be refunded when additional residences or properties requiring service may connect to the facilities installed under this Agreement within the applicable 5 year (all natural gas customers, General Service electric, non-Single Family Residential electric, all new residential subdivision and townhouse connects) or 10 year (for Single Family Residential electric) periods after Company's completion of the line extension for the Customer. Future applicants attaching to existing facilities that carry Advance line extension designation within the time periods referenced above share in cost of the installation of the original line extension. Any future attachments will result in a refund to Customer in an amount determined by the Company in accordance with the Tariff. No refund will be made after the applicable 5 or 10 year period.

EXHIBIT C - PHASE 3 STREET LIGHT COST



Notification # 340165021
Customer #1116371

AND/OR

1.2 Contribution in Aid of Construction. In consideration of the Company's agreement to install service facilities, Customer agrees to pay a CIAC in the sum of \$ 0.00 for construction of the facilities identified in the Quote.

For clarification, a "CIAC" is a non-refundable payment made by a customer to pay for costs in excess of the free allowance set forth in the Tariffs.

2. CONDITIONS TO INSTALLATION.

2.1 Payment. Customer shall make payment of the Advance or the CIAC (if payment is required) prior to Company scheduling a construction start date. Company must receive payment and satisfactory evidence of required permits and right-of-way authority prior to ordering materials, scheduling crews or starting construction.

2.2 Right-of-Way. Customer shall provide the right-of-way required for the installation of the Company's service facilities. Customer shall grant or obtain for the Company an easement along the route of the line extension in a form satisfactory to the Company.

2.3 Permits. Customer shall provide all required permits from appropriate governmental agencies for the construction work and installation of the Company's facilities and Customer's equipment. Copies of all permits must be provided to the Company.

2.4 Additional Costs. If the Customer requests facilities be installed in frozen, rocky or hard ground, the Customer may be responsible for additional charges for installation. The Company will notify the Customer of these charges prior to installation when feasible, and otherwise when encountered during the installation work. If the Company requires additional charges prior to installation, and the basis for such extra cost is not encountered during the performance of the work, Company shall refund such charges to Customer.

2.5 Storm Water. Customer is solely responsible for compliance with all Montana Department of Environmental Quality storm water regulations. All soil disturbing activities deemed necessary by the Company for the installation, operation and maintenance of the facilities must be incorporated by Customer in the Storm Water Pollution Prevention Plan. Customer shall operate and maintain all storm water best management practices at all times.

2.6 Underground Facilities. Prior to construction, all customer-owned, rented or leased underground facilities (including but not limited to sprinkler systems, septic systems propane tanks and associated lines, and communication and electric lines) must be properly identified and physically marked by Customer. The Company is not responsible for damages resulting from mismarked or unidentified customer facilities. Contact the Company's Construction Department with questions related to appropriately marking Customer-owned facilities.

2.7 Customer's Equipment. Customer shall install Customer's facilities in accordance with the Company's "New Service Guide" and "Electric Service Requirements & Guidelines." The location of Customer's meter must be approved by the Company prior to the installation of equipment owned by the Customer. Customer shall provide service entrance and termination points as specified by the Company's installation standards in effect at the time construction begins.

2.8 Restoration and Grading. The Company will make a reasonable attempt to preserve private roadways and landscaping, but Customer is responsible for final compaction and restoration of private roadways and landscaping, including the removal of excess spoil piles. The Company will install facilities with the understanding that ground-level is the final grade, unless otherwise directed in writing by Customer. Should changes to grade be made in the future that result in Company's facilities being raised or lowered, the Customer is responsible for the costs associated with this change.

3. GENERAL CONDITIONS.

3.1 All terms, prices and conditions set forth herein are subject to modification resulting from changes in applicable rules, Tariffs, regulations, ordinances, the scope of project, and laws that may be amended or enacted after the date of this Agreement.

3.2 The payment amounts set forth in this Agreement are effective for 4 months from the date of this Agreement. If construction has not commenced within such period due to any action, omission or failure to act by Customer, the project will be reviewed for any changes in the cost. The Company will perform one line extension engineering cost estimate per year at Customer's location free of charge. If subsequent redesign estimates are requested within the one year period from the original quote, a charge of \$68.12/hour

EXHIBIT C - PHASE 3 STREET LIGHT COST

**NorthWestern
Energy**

Notification # 340165021
Customer #1116371

(minimum charge = \$68.12) will be assessed and is payable prior to delivery of the estimate to Customer. If Customer proceeds with installation, fees paid for estimates will be credited toward the contribution payment.

3.3 If the facilities required to serve Customer must be relocated or modified at the request of Customer after installation, the Customer shall pay the costs of moving Company facilities.

3.4 The Company agrees to establish service within a reasonable period of time after the Customer's equipment passes inspection by the state and local authorities as required by law. The Company will proceed with the survey, design and construction of its facilities in a normal manner using its existing work force (Company employees or contractors) and material supply sources. Installation will be performed during normal working hours and the Company may reschedule the work to achieve efficient workload of Company forces. Availability of materials, weather conditions, frozen ground, access, or obtaining permits from governmental agencies or railroads may cause delays beyond the control of the Company or the Customer.

3.5 If Company is installing lighting units, the facilities will be placed in a location agreeable to both Customer and Company. Customer is responsible for notifying Company of any outage of lighting units. Company will make repairs and replace defective or damaged facilities within a reasonable time after notice of any outage, but Company does not patrol the system to determine if the lighting units are in operating condition at all times.

3.6 In the event of a conflict between the terms of this Agreement and the Tariffs, the terms of the Tariffs prevail.

4. ADDITIONAL CONDITIONS.

THIS PROJECT WILL INSTALL 7 NEW STREET LIGHTS IN THE VIGILANTE MAJOR SUBDIVISION PHASE 3. THE NEW LIGHTS WILL BE AN LED EQUIVALENT 100 WATT LEXINGTON LIGHT FIXTURE ON A 16 FOOT WHATLEY FIBERGLASS POLE. THE MONTHLY STREET LIGHT COST ESTIMATE FOR THE NEW LIGHTS IS \$236.58.

*Based on current rates and is subject to revision by the Public Service Commission of Montana.

THIS QUOTE IS CONTINGENT UPON THE INSTALLATION OF THE NEW UNDERGROUND ELECTRIC FACILITY INTO PHASE 3 OF THE VIGILANTE MAJOR SUBDIVISION. IF THIS NEW FACILITY IS NOT INSTALLED AND/OR SIGNIFICANT CHANGES ARE MADE TO IT THEN THIS QUOTE WILL BE REEVALUATED.

CUSTOMER/CONTRACTOR RESPONSIBILITIES BEFORE NORTHWESTERN ENERGY CREW IS SCHEDULED:

- 1) OBTAIN ANY NECESSARY UTILITY EASEMENTS.
- 3) SIGN AND RETURN CUSTOMER AGREEMENT
- 4) CLEAR ACCESS: CLEAR TREES, REMOVE DEBRIS AND OTHER MATERIAL FROM SERVICE ROUTE, AND COMPLETE ANY DIRT WORK TO SUB GRADE.

IMPORTANT - NOT COMPLETING THE ABOVE STEPS WILL RESULT IN DELAYS AND/OR CREW RESCHEDULING.

IN WITNESS WHEREOF, the Parties have caused this Agreement to be duly executed in duplicate as of the day and year first above written.

NORTHWESTERN ENERGY

CUSTOMER

By: Kuhnee Kuka

By: Jerry Watson

Printed Name: Kuhnee Kuka

Printed Name: Jerry K. Watson

Title: NCP

Title: M BR

EXHIBIT C - PHASE 3 STREET
LIGHT COST

NorthWestern
Energy

Notification # 340165021
Customer #1116371

Date: 17 March 22 *

Phone: _____

Date: 3/17/22

Phone: 406-594-0137

CITY OF EAST HELENA
306 E MAIN ST / PO BOX 1170
EAST HELENA, MT 59635
(406) 227-5321

ORIGINAL COUNCIL MEETING DATE: 08/05/2025

Agenda item:

Resolution to Modify Existing Street Maintenance District No. 101

From:

City Attorney Elverum

Initiated by City: ☒ YES ☐ NO (check one)

Department:

Roads & Streets

Presented by:

Council President Dahl

Action requested:

Approve/Deny/Table

PLEASE PROVIDE A NARRATIVE BACKGROUND OF THE PROPOSED AGENDA ITEM:

Highland Meadows Street Maintenance District 101

Attachment:

Resolution 626

Attachments: ☒ YES ☐ NO (check one)

Date submitted:

RECOMMENDATIONS:

Approve for agenda:

☐ YES

☐ NO

Initial:

Referred to Dept. Head for resolution:

☐ YES

☐ NO

Referred to _____:

☐ YES

☐ NO

Agenda requests must be submitted to East Helena City Hall by noon the Wednesday prior to the Tuesday council meeting.

RESOLUTION NO. 626

A RESOLUTION OF THE CITY COUNCIL OF THE CITY OF EAST HELENA, MONTANA, RELATING TO STREET MAINTENANCE DISTRICT NO. 101 CREATING THE DISTRICT FOR THE PURPOSE OF UNDERTAKING LOCAL MAINTENANCE AND IMPROVEMENTS TO THE INTERNAL STREETS OF PHASES 1, 2, 3 AND 4 OF HIGHLAND MEADOWS SUBDIVISION AND ASSESSING THE COCTS THEREFOR

WHEREAS, on the 1st day of July, 2025, the City Council (the “Council”) of the City of East Helena, Montana (the “City”) adopted Resolution 622 (the “Resolution of Intention”), stating its intent to create Street Maintenance District No. 101 (the “District”) to finance the costs of maintenance and improvements within the District as described therein (the “Improvements”); and

WHEREAS, on July 19th and August 2nd, 2025, the City Clerk did publish a Notice of Passage of the Resolution of Intention to Create Street Maintenance District No. 101 in accordance with Sect. 7-12-4106, and Sect. 7-12-4426, MCA, and mailed said notice to each person, firm, or corporation having real property within the proposed District; and

WHEREAS, the East Helena City Council conducted a public hearing on protests submitted to the creation and assessment of the District on August 5, 2025 and did pass on all such protests having found the written protests not sufficient to bar the Council from proceeding with the creation and assessment of the District.

NOW, THEREFORE, BE IT RESOLVED BY THE CITY COUNCIL OF THE CITY OF EAST HELENA, MONTANA;

Section 1. Passage of Resolution of Intention. This Council, on July 1, 2025, adopted Resolution of Intention 622, pursuant to which the Council declared its intention to create the District, under Montana Code Annotated Title 7, Chapter 12, Parts 41, 42, and 44, as amended, for the purpose of financing costs of certain local improvements and maintenance within the District described generally therein (the “improvements”), and paying the costs incidental thereto, including costs associated with the creation and administration of the District.

Section 2. Notice of Passage of the Resolution of Intention. Notice of passage of the Resolution of Intention was duly published and mailed to all respects in accordance with law, and on August 5th, 2025, this Council conducted a public hearing on written protests submitted by property owners against the creation and assessment of the District and the making of the Improvements. The public hearing occurred on the date of the first regular meeting of the Council following the expiration of the 15 day protest period.

Section 3. Protests. Within the Protest Period, no protests were filed with the City Clerk.

Section 4. Creation of the District; Insufficiency of Protests. The Council

determines the District is hereby created and assessed on the terms and conditions set forth in and otherwise in accordance with, the Resolution of Intention. The protests against the creation and assessment of the District or the making of the Improvements filed during the Protest Period are hereby found to be insufficient. The findings and determinations made in the Resolution of Intention, including, without limitation those relating to benefits conferred and the costs associated with the creation and administration of the District, are hereby ratified, and confirmed.

Section 5. Boundaries of District. The limits and boundaries of the District are depicted by the continuous line circumscribing the exterior boundaries of the properties shown on the map attached as Exhibit A hereto (which is hereby incorporated herein and made a part hereof) and includes all those lots and parcels on Tam O'Shanter Court, Meadow View Loop, Southerland Court, Lamond Court, Kinross Court, Karnnel Court, Glenfinnan Court, and Sterling Loop descriptions of which are contained in Exhibit B hereto (which is hereby incorporated herein and made a part hereof), which boundaries are designated and confirmed as the boundaries of the District.

Section 6. Benefited Property. The District and territory included within the limits and boundaries described in Section 5 and shown on Exhibit A and Exhibit B are hereby declared to be the street maintenance district and the territory that will benefit from and be benefitted by the Improvements and will be assessed for a portion of the costs of the Improvements described herein. The property included within said limits and boundaries is hereby declared to be the property benefitted by the Improvements.

Section 7. Engineer and Estimated Cost. The City, acting through its contract engineering firm, shall be the engineer for the District. The Engineer has estimated the initial annual costs of the Improvements to be \$70,049.28, as shown on Exhibit C, attached hereto (and hereby incorporated herein and made a part hereof). The District's costs of the Improvements are shown on Exhibit B (which is hereby incorporated herein and made a part hereof).

Section 8. Assessment Method.

8.1 Property To Be Assessed. All properties in the District will be assessed for their proportionate share of the costs of the Improvements plus Incidental Costs from which they derive a benefit as determined and set forth herein. The Improvements plus Incidental Costs shall be assessed against the property in the District benefiting from these Improvements, based on the method authorized by Section 7-12-4422(2)(c), M.C.A., as particularly applied and set forth in Section 8.2 hereof.

8.2 Equal Assessment To Each Lot. The Improvements within the District plus Incidental Costs will be assessed equally to each lot or parcel located within the district without regard to assessable area of the lot or parcel. The city council has determined that the benefits derived from the Improvements by each lot or parcel are substantially equivalent given that each lot or parcel is a single-family residence with similar expected estimated vehicle trips generated.

8.3 Assessment Methodology Equitable and Consistent with Benefit. This Council hereby determines that the method of assessment described above and the assessment of costs of the

Districts Improvements against the properties benefitted thereby as prescribed in Section 8.2 are equitable and in proportion to and not exceeding the special benefits derived from the Improvements by the lots, tracts and parcels to be assessed therefore within the District.

Passed, by the City Council of the City of East Helena, Montana, and approved by the Mayor this 5th day of August 2025.

Kelly Harris, Mayor

ATTEST:

Amy Thorngren, City Clerk/Treasurer

CERTIFICATE AS TO RESOLUTION AND ADOPTING VOTE

I, the undersigned, being the duly qualified and acting recording officer of the City of East

Helena, Montana (the “City”) hereby certify that the attached resolution is a true copy of Resolution No. 626, entitled: “A RESOLUTION OF THE CITY COUNCIL OF THE CITY OF EAST HELENA, MONTANA, RELATING TO STREET MAINTENANCE DISTRICT NO. 101, CREATING THE DISTRICT FOR THE PURPOSE OF UNDERTAKING LOCAL MAINTENANCE AND IMPROVEMENTS TO THE INTERNAL STREETS OF PHASES 1, 2, 3 AND 4 OF HIGHLAND MEADOWS SUBDIVISION AND ASSESSING THE COCTS THEREFOR” (the “Resolution”), on file in the original records of the City in my legal custody; that the Resolution was duly adopted by the City Council of the City at a meeting on August 5th, 2025, and that the meeting was duly held by the City Council and was attended throughout by a quorum, pursuant to call and notice of such meeting given as required by law; and that the Resolution has not as of the date hereof been amended or repealed.

I further certify that, upon vote being taken on the Resolution at said meeting, the following Council Members voted in favor thereof: _____

_____;

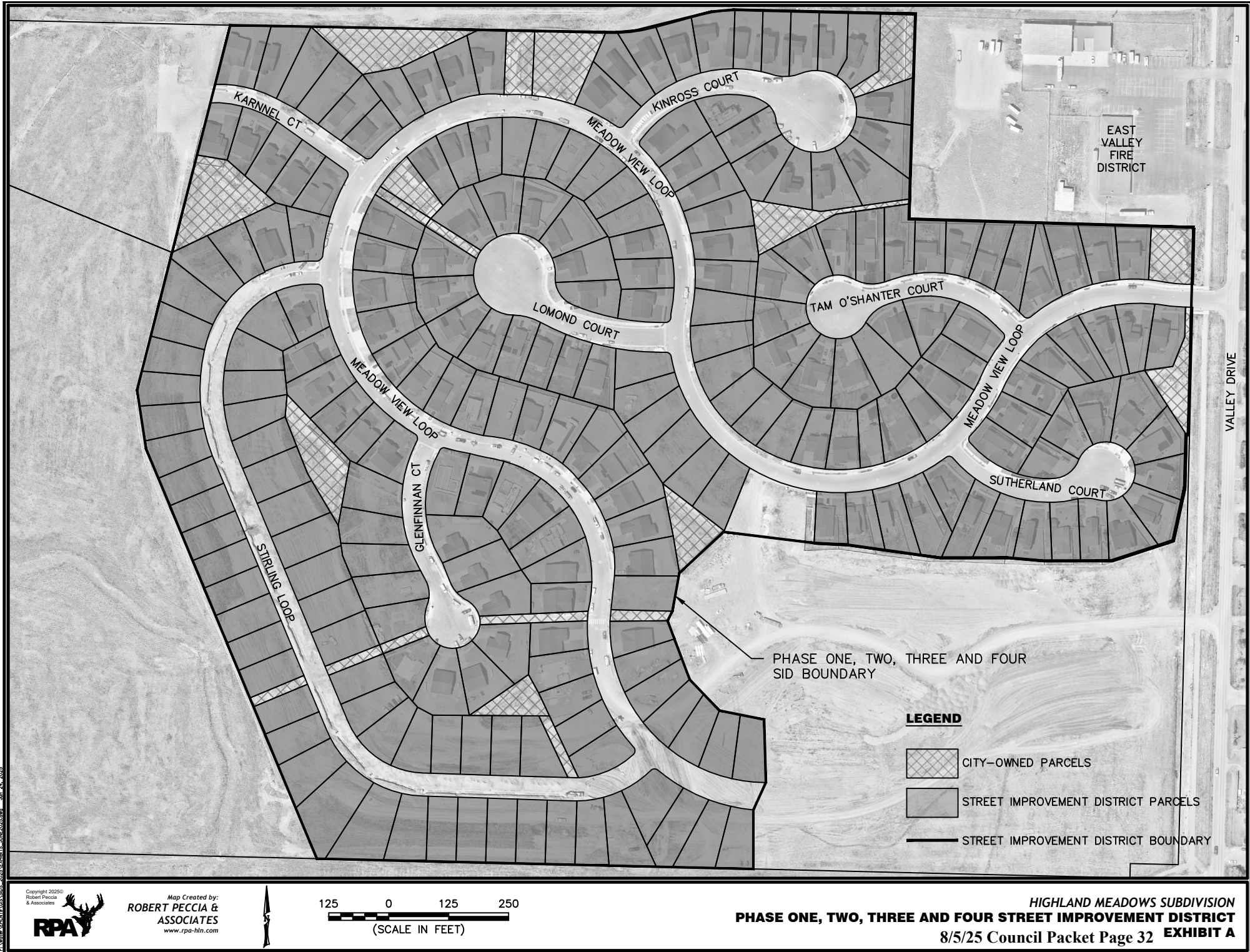
voted against the same: _____;

abstained from voting thereon: _____;

or were absent: _____.

WITNESS my hand officially this ____ day of _____, 2025.

City Clerk



Copyright 2025
Robert Peccia & Associates
www.rpa-hln.com



Map Created by:
ROBERT PECCIA & ASSOCIATES
www.rpa-hln.com

125 0 125 250
(SCALE IN FEET)

HIGHLAND MEADOWS SUBDIVISION
PHASE ONE, TWO, THREE AND FOUR STREET IMPROVEMENT DISTRICT
8/5/25 Council Packet Page 32 **EXHIBIT A**

Exhibit B - Assessment

Property Address	City, State, Zip Code	Property Owner	Owner Mailing Address	Owner City	Owner State	Owner Zip Code	Yearly Assessment
310 SUTHERLAND CT	EAST HELENA, MT 59635	BURKETT CLAY & ALESA	310 SUTHERLAND CT	EAST HELENA	MT	59635-3146	\$ 293.09
352 MEADOW VIEW LOOP	EAST HELENA, MT 59635	JOHNSON RAYMOND & KELLY	352 MEADOW VIEW LOOP	EAST HELENA	MT	59635-3145	\$ 293.09
367 MEADOW VIEW LOOP	EAST HELENA, MT 59635	GILSON MARCY A	367 MEADOW VIEW LOOP	EAST HELENA	MT	59635-3145	\$ 293.09
317 TAM O SHANTER CT	EAST HELENA, MT 59635	CHRISTOPHERSON KURT A & DARCY J	317 TAM O SHANTER CT	EAST HELENA	MT	59635-3373	\$ 293.09
315 TAM O SHANTER CT	EAST HELENA, MT 59635	GOODMAN PAUL	PO BOX 472	EAST HELENA	MT	59635-0472	\$ 293.09
387 MEADOW VIEW LOOP	EAST HELENA, MT 59635	JEWETT NATHAN M	387 MEADOW VIEW LOOP	EAST HELENA	MT	59635-3145	\$ 293.09
311 TAM O SHANTER CT	EAST HELENA, MT 59635	YOUNG-SCHUYLER KURTIS ETAL	311 TAM O SHANTER CT	EAST HELENA	MT	59635-3373	\$ 293.09
384 MEADOW VIEW LOOP	EAST HELENA, MT 59635	WH EAST HELENA 34 LLC	24911 AVENUE STANFORD	SANTA CLARITA	CA	91355-1281	\$ 293.09
308 TAM O SHANTER CT	EAST HELENA, MT 59635	SPRAGUE BRIAN A & BAILEY L	308 TAM O SHANTER CT	EAST HELENA	MT	59635	\$ 293.09
305 SUTHERLAND CT	EAST HELENA, MT 59635	CHRISTENSEN ROGNALD & LORA	305 SUTHERLAND CT	EAST HELENA	MT	59635-3146	\$ 293.09
343 MEADOW VIEW LOOP	EAST HELENA, MT 59635	GIBBONS ERIC & KAYLA	343 MEADOW VIEW LOOP	EAST HELENA	MT	59635-3145	\$ 293.09
317 SUTHERLAND CT	EAST HELENA, MT 59635	MART CAITLIN L & TRAVIS L	317 SUTHERLAND CT	EAST HELENA	MT	59635-3146	\$ 293.09
339 MEADOW VIEW LOOP	EAST HELENA, MT 59635	WINKLEPLECK LARRY & LINDA LOU	339 MEADOW VIEW LOOP	EAST HELENA	MT	59635-3145	\$ 293.09
318 SUTHERLAND CT	EAST HELENA, MT 59635	FORD JASON & KATHY	7743 CANYON FERRY RD	HELENA	MT	59602-8518	\$ 293.09
356 MEADOW VIEW LOOP	EAST HELENA, MT 59635	CHRISTIANSEN TAMARA ETAL	356 MEADOW VIEW LOOP	EAST HELENA	MT	59635-3145	\$ 293.09
360 MEADOW VIEW LOOP	EAST HELENA, MT 59635	MULLIKIN CONNIE	PO BOX 1784	EAST HELENA	MT	59635-1784	\$ 293.09
375 MEADOW VIEW LOOP	EAST HELENA, MT 59635	MICHAEL GLEN & SUSAN L CRAIN DECLARATION OF TRUST	375 MEADOW VIEW LOOP	EAST HELENA	MT	59635-3145	\$ 293.09
379 MEADOW VIEW LOOP	EAST HELENA, MT 59635	WELNA BENJAMIN & KATE	379 MEADOW VIEW LOOP	EAST HELENA	MT	59635-3145	\$ 293.09
302 TAM O SHANTER CT	EAST HELENA, MT 59635	SEIDENSTICKER JENNY & JAMES E	302 TAM O SHANTER CT	EAST HELENA	MT	59635-3373	\$ 293.09
380 MEADOW VIEW LOOP	EAST HELENA, MT 59635	ANTHONY JOHN D	380 MEADOW VIEW LOOP	EAST HELENA	MT	59635	\$ 293.09
313 SUTHERLAND CT	EAST HELENA, MT 59635	BLAZQUEZ ALEXANDER & VICTORIA	3516 SAVANA LN	ALAMEDA	CA	94502-7023	\$ 293.09
351 MEADOW VIEW LOOP	EAST HELENA, MT 59635	THURMOND NANCY MARIE	351 MEADOW VIEW LOOP	EAST HELENA	MT	59635-3145	\$ 293.09
304 SUTHERLAND CT	EAST HELENA, MT 59635	CAMPBELL NICOLE	PO BOX 1844	EAST HELENA	MT	59635-1844	\$ 293.09
363 MEADOW VIEW LOOP	EAST HELENA, MT 59635	WARD NATHANIEL TYLER ETAL	363 MEADOW VIEW LOOP	EAST HELENA	MT	59635-3145	\$ 293.09
368 MEADOW VIEW LOOP	EAST HELENA, MT 59635	TIEFENTHALER NICHOLE & BRADLEY	368 MEADOW VIEW LOOP	EAST HELENA	MT	59635-3145	\$ 293.09
320 TAM O SHANTER CT	EAST HELENA, MT 59635	CRICHTON RYAN E	320 TAM O SHANTER CT	EAST HELENA	MT	59635-3373	\$ 293.09
316 TAM O SHANTER CT	EAST HELENA, MT 59635	COOPER CELENA & BRANDON	316 TOM O SHANTER CT	EAST HELENA	MT	59635-3373	\$ 293.09
309 SUTHERLAND CT	EAST HELENA, MT 59635	BARTHOLOMEW TRAVIS WILLIAM	309 SUTHERLAND CT	EAST HELENA	MT	59635-3146	\$ 293.09
311 SUTHERLAND CT	EAST HELENA, MT 59635	MORRIS NATHAN T & CATHY M	311 SUTHERLAND CT	EAST HELENA	MT	59635-3146	\$ 293.09
338 MEADOW VIEW LOOP	EAST HELENA, MT 59635	CAMBRIDGE JARED PAUL & EMILY MEGAN	338 MEADOW VIEW LOOP	EAST HELENA	MT	59635-3145	\$ 293.09
321 TAM O SHANTER CT	EAST HELENA, MT 59635	GIROLAMI JOHN & SHELLEY	321 TAM O SHANTER CT	EAST HELENA	MT	59635-3373	\$ 293.09
371 MEADOW VIEW LOOP	EAST HELENA, MT 59635	BEATY STEPHEN & SILVER	371 MEADOW VIEW LOOP	EAST HELENA	MT	59635-3145	\$ 293.09
307 TAM O SHANTER CT	EAST HELENA, MT 59635	EDEEN GRACE ETAL	307 TAM O SHANTER CT	EAST HELENA	MT	59635-3373	\$ 293.09
374 MEADOW VIEW LOOP	EAST HELENA, MT 59635	SCHULTZ ROBERT B	374 MEADOW VIEW LOOP	EAST HELENA	MT	59635-3145	\$ 293.09
310 TAM O SHANTER CT	EAST HELENA, MT 59635	KORTH SHAWNA K	PO BOX 5131	HELENA	MT	59604-5131	\$ 293.09
347 MEADOW VIEW LOOP	EAST HELENA, MT 59635	GERHART RACHEL TRUSTEE ETAL	347 MEADOW VIEW LOOP	EAST HELENA	MT	59635	\$ 293.09
344 MEADOW VIEW LOOP	EAST HELENA, MT 59635	ABEL SCOTT & MELISSA	344 MEADOW VIEW LOOP	EAST HELENA	MT	59635-3145	\$ 293.09
348 MEADOW VIEW LOOP	EAST HELENA, MT 59635	KARA J HURST LIVING TRUST	348 MEADOW VIEW LOOP	EAST HELENA	MT	59635-3145	\$ 293.09
314 SUTHERLAND CT	EAST HELENA, MT 59635	POWER CHRISTINA E & ERIC K	314 SUTHERLAND CT	EAST HELENA	MT	59635-3146	\$ 293.09
322 TAM O SHANTER CT	EAST HELENA, MT 59635	PHILLIPS WILLIAM G & JANE S	2089 GREY FOX LN	VIRGINIA BEACH	VA	23456-5219	\$ 293.09
314 TAM O SHANTER CT	EAST HELENA, MT 59635	HANLEY BERNARD T & MARCIA E	314 TAM O SHANTER CT	EAST HELENA	MT	59635-3373	\$ 293.09
315 SUTHERLAND CT	EAST HELENA, MT 59635	JAMISON PAMELA	315 SUTHERLAND CT	EAST HELENA	MT	59635-3146	\$ 293.09
307 SUTHERLAND CT	EAST HELENA, MT 59635	BARTH NANCY A	307 SUTHERLAND CT	EAST HELENA	MT	59635-3146	\$ 293.09
355 MEADOW VIEW LOOP	EAST HELENA, MT 59635	JENSEN MONTY & REBECCA	355 MEADOW VIEW LOOP	EAST HELENA	MT	59635-3145	\$ 293.09
319 SUTHERLAND CT	EAST HELENA, MT 59635	LOEWEN JUSTIN & TAYLOR	319 SUTHERLAND CT	EAST HELENA	MT	59635-3146	\$ 293.09
312 SUTHERLAND CT	EAST HELENA, MT 59635	LASHLEY RONALD II	312 SUTHERLAND CT	EAST HELENA	MT	59635-3146	\$ 293.09
316 SUTHERLAND CT	EAST HELENA, MT 59635	MCCAULEY MACY & HUGH	316 SUTHERLAND CT	EAST HELENA	MT	59635	\$ 293.09
319 TAM O SHANTER CT	EAST HELENA, MT 59635	LEWIS CHRISTOPHER JAMES ETAL	319 TAM O SHANTER CT	EAST HELENA	MT	59635-3373	\$ 293.09
364 MEADOW VIEW LOOP	EAST HELENA, MT 59635	NELSON TYLER & ASHLYN	364 MEADOW VIEW LOOP	EAST HELENA	MT	59635-3145	\$ 293.09
383 MEADOW VIEW LOOP	EAST HELENA, MT 59635	Cragwall JAMIE	383 MEADOW VIEW LOOP	EAST HELENA	MT	59635-3145	\$ 293.09
378 MEADOW VIEW LOOP	EAST HELENA, MT 59635	BLOOMQUIST LINDSEY RENEE & JOSEPH WILLIAM	PO BOX 125	WOLF CREEK	MT	59648-0125	\$ 293.09
304 TAM O SHANTER CT	EAST HELENA, MT 59635	MERCADO RAMON E ET AL	304 TAM O SHANTER CT	EAST HELENA	MT	59635	\$ 293.09
318 TAM O SHANTER CT	EAST HELENA, MT 59635	BARNETT DONALD & LELA GAIL	318 TAM O SHANTER CT	EAST HELENA	MT	59635-3373	\$ 293.09
306 TAM O SHANTER CT	EAST HELENA, MT 59635	LUNDY LOREN L & JULIE M TRUSTEES ETAL	26480 W BURNETT RD	BUCKEYE	AZ	85396-9241	\$ 293.09
271 MEADOW VIEW LOOP	EAST HELENA, MT 59635	FRIED KIRK	271 MEADOW VIEW LOOP	EAST HELENA	MT	59635-3158	\$ 293.09
334 MEADOW VIEW LOOP	EAST HELENA, MT 59635	WH EAST HELENA 34 LLC	24911 AVENUE STANFORD	VALENCIA	CA	91355-1281	\$ 293.09
298 MEADOW VIEW LOOP	EAST HELENA, MT 59635	PRICE HUNTER ETAL	298 MEADOW VIEW LOOP	EAST HELENA	MT	59635-3158	\$ 293.09
211 KINROSS CT	EAST HELENA, MT 59635	HANSEN BRANDON & CATHERINE	211 KINROSS CT	EAST HELENA	MT	59635-3163	\$ 293.09
290 MEADOW VIEW LOOP	EAST HELENA, MT 59635	CRANMORE CHASE D & SARAH	290 MEADOW VIEW LOOP	EAST HELENA	MT	59635-3158	\$ 293.09
219 KINROSS CT	EAST HELENA, MT 59635	SHUTEY MARK J & TAMMY L	219 KINROSS CT	EAST HELENA	MT	59635-3163	\$ 293.09
225 KINROSS CT	EAST HELENA, MT 59635	NWAOKA FOR UGOCHUKWU MAURICE ETAL	225 KINCROSS CT	EAST HELENA	MT	59635	\$ 293.09

Property Address	City, State, Zip Code	Property Owner	Owner Mailing Address	Owner City	Owner State	Owner Zip Code	Yearly Assessment	
224 KINROSS CT	EAST HELENA, MT 59635	FOX LISA & REED	224 KINCROSS CT	EAST HELENA	MT	59635	\$	293.09
313 LOMOND CT	EAST HELENA, MT 59635	BOZU SERGEY & KURA	313 LOMOND CT	EAST HELENA	MT	59635-3151	\$	293.09
312 LOMOND CT	EAST HELENA, MT 59635	BORLAUG ROGER & SHARON	PO BOX 103	GILDFORD	MT	59525-0103	\$	293.09
316 LOMOND CT	EAST HELENA, MT 59635	HOFFA JON D & ELIZABETH A TRUSTEES ETAL	3295 VINCES CT	HELENA	MT	59602-6469	\$	293.09
279 MEADOW VIEW LOOP	EAST HELENA, MT 59635	REEVE KERRY & WENDY SMITH	279 MEADOW VIEW LOOP	EAST HELENA	MT	59635-3158	\$	293.09
213 KINROSS CT	EAST HELENA, MT 59635	SCHWARTZ REBECCA	213 KINROSS CT	EAST HELENA	MT	59635-3163	\$	293.09
217 KINROSS CT	EAST HELENA, MT 59635	BREMNER DAVID F & REBECCA A	217 KINROSS CT	EAST HELENA	MT	59635-3163	\$	293.09
214 KINROSS CT	EAST HELENA, MT 59635	OCHOA DANIEL DAKOTA	214 KINCROSS CT	EAST HELENA	MT	59635	\$	293.09
305 LOMOND CT	EAST HELENA, MT 59635	HOFFA JON D & ELIZABETH A TRUSTEES ETAL	3295 VINCES CT	HELENA	MT	59602-6469	\$	293.09
315 LOMOND CT	EAST HELENA, MT 59635	MAKOUTZ JASON & MEGAN	315 LOMOND COURT	EAST HELENA	MT	59635	\$	293.09
317 LOMOND CT	EAST HELENA, MT 59635	BOREN KAITLIN & JUSTIN C	317 LOMOND COURT	EAST HELENA	MT	59635	\$	293.09
299 MEADOW VIEW LOOP	EAST HELENA, MT 59635	FRAWLEY PATRICK	299 MEADOW VIEW LOOP	EAST HELENA	MT	59635-3158	\$	293.09
326 MEADOW VIEW LOOP	EAST HELENA, MT 59635	WH EAST HELENA 34 LLC	24911 AVENUE STANFORD	VALENCIA	CA	91355-1281	\$	293.09
318 MEADOW VIEW LOOP	EAST HELENA, MT 59635	WH EAST HELENA 34 LLC	24911 AVENUE STANFORD	VALENCIA	CA	91355-1281	\$	293.09
294 MEADOW VIEW LOOP	EAST HELENA, MT 59635	PEREZ ISAAC	294 MEADOW VIEW LOOP	EAST HELENA	MT	59635-3158	\$	293.09
210 KINROSS CT	EAST HELENA, MT 59635	THE HOFFA FAMILY TRUST	3295 VINCES CT	HELENA	MT	59602-6469	\$	293.09
327 MEADOW VIEW LOOP	EAST HELENA, MT 59635	WH EAST HELENA 34 LLC	24911 AVENUE STANFORD	VALENCIA	CA	91355-1281	\$	293.09
323 MEADOW VIEW LOOP	EAST HELENA, MT 59635	WH EAST HELENA 34 LLC	24911 AVENUE STANFORD	VALENCIA	CA	91355-1281	\$	293.09
319 MEADOW VIEW LOOP	EAST HELENA, MT 59635	WH EAST HELENA 34 LLC	24911 AVENUE STANFORD	VALENCIA	CA	91355-1281	\$	293.09
307 LOMOND CT	EAST HELENA, MT 59635	ATWAN ABANOUB & TAYLOR	307 LOMOND CT	EAST HELENA	MT	59635-3151	\$	293.09
311 LOMOND CT	EAST HELENA, MT 59635	LAVALLEY LYNETTE L	311 LOMOND CT	EAST HELENA	MT	59635-3151	\$	293.09
295 MEADOW VIEW LOOP	EAST HELENA, MT 59635	DECREVEL JOHNNY & DUSTY	295 MEADOW VIEW LOOP	EAST HELENA	MT	59635-3158	\$	293.09
312 MEADOW VIEW LOOP	EAST HELENA, MT 59635	WH EAST HELENA 34 LLC	24911 AVENUE STANFORD	VALENCIA	CA	91355-1281	\$	293.09
306 MEADOW VIEW LOOP	EAST HELENA, MT 59635	WH EAST HELENA 34 LLC	24911 AVENUE STANFORD	VALENCIA	CA	91355-1281	\$	293.09
300 MEADOW VIEW LOOP	EAST HELENA, MT 59635	POPEVIS CHERYL	300 MEADOW VIEW LOOP	EAST HELENA	MT	59635-3145	\$	293.09
215 KINROSS CT	EAST HELENA, MT 59635	HOLAHAN WILLIAM & MOLLY	215 KINROSS CT	EAST HELENA	MT	59635-3163	\$	293.09
292 MEADOW VIEW LOOP	EAST HELENA, MT 59635	JOHNSON CHARDONNAY ETAL	292 MEADOW VIEW LOOP	EAST HELENA	MT	59635-3158	\$	293.09
226 KINROSS CT	EAST HELENA, MT 59635	LONGTINE DIANE	1008 5TH AVE	HELENA	MT	59601-4444	\$	293.09
304 MEADOW VIEW LOOP	EAST HELENA, MT 59635	WH EAST HELENA 34 LLC	24911 AVENUE STANFORD	VALENCIA	CA	91355-1281	\$	293.09
216 KINROSS CT	EAST HELENA, MT 59635	HEATON RILEY & JESSIAH	216 KINCROSS CT	EAST HELENA	MT	59635	\$	293.09
212 KINROSS CT	EAST HELENA, MT 59635	PLANT JARROD & TAYLOR	212 KINCROSS CT	EAST HELENA	MT	59635	\$	293.09
218 KINROSS CT	EAST HELENA, MT 59635	SMITH MICHELE DANETTE	218 KINCROSS CT	EAST HELENA	MT	59635	\$	293.09
206 KINROSS CT	EAST HELENA, MT 59635	NORINE CECILY A	206 KINCROSS COURT	EAST HELENA	MT	59635	\$	293.09
202 KINROSS CT	EAST HELENA, MT 59635	CAMERON COREY JARON & BROOKE RENE	202 KINROSS CT	EAST HELENA	MT	59635-3163	\$	293.09
204 KINROSS CT	EAST HELENA, MT 59635	SMITH KORY M ETAL	204 KINROSS CT	EAST HELENA	MT	59635-3163	\$	293.09
307 MEADOW VIEW LOOP	EAST HELENA, MT 59635	WH EAST HELENA 34 LLC	24911 AVENUE STANFORD	VALENCIA	CA	91355-1281	\$	293.09
311 MEADOW VIEW LOOP	EAST HELENA, MT 59635	WH EAST HELENA 34 LLC	24911 AVENUE STANFORD	VALENCIA	CA	91355-1281	\$	293.09
320 LOMOND CT	EAST HELENA, MT 59635	NAKAMURA ROY & SUSAN	320 LOMOND CT	EAST HELENA	MT	59635-3151	\$	293.09
318 LOMOND CT	EAST HELENA, MT 59635	CARLSON NATHAN & KY'ANNA	318 LOMOND CT	EAST HELENA	MT	59635-3151	\$	293.09
303 LOMOND CT	EAST HELENA, MT 59635	VISSER PROPERTIES LLC	79 DESERT DR	TOWNSEND	MT	59644-9735	\$	293.09
291 MEADOW VIEW LOOP	EAST HELENA, MT 59635	WH EAST HELENA 34 LLC	24911 AVENUE STANFORD	VALENCIA	CA	91355-1281	\$	293.09
287 MEADOW VIEW LOOP	EAST HELENA, MT 59635	VANDONSEL HUNTER & ALEXIS	287 MEADOW VIEW LOOP	EAST HELENA	MT	59635-3158	\$	293.09
283 MEADOW VIEW LOOP	EAST HELENA, MT 59635	WH EAST HELENA 34 LLC	24911 AVENUE STANFORD	VALENCIA	CA	91355-1281	\$	293.09
286 MEADOW VIEW LOOP	EAST HELENA, MT 59635	ANDERSON NEIL P & DAWN R	286 MEADOW VIEW LOOP	EAST HELENA	MT	59635-3158	\$	293.09
220 KINROSS CT	EAST HELENA, MT 59635	MCMILLAN CHAD A & BROOKE	220 KINROSS CT	EAST HELENA	MT	59635	\$	293.09
208 KINROSS CT	EAST HELENA, MT 59635	BLANK BRANDON & HOLLY MATZ	6150 ROSENDALE RD	EAST HELENA	MT	59635-9774	\$	293.09
315 MEADOW VIEW LOOP	EAST HELENA, MT 59635	WH EAST HELENA 34 LLC	24911 AVENUE STANFORD	VALENCIA	CA	91355-1281	\$	293.09
309 LOMOND CT	EAST HELENA, MT 59635	SCHULTZ ELISE M & JOSEPH A	309 LOMOND CT	EAST HELENA	MT	59635-3151	\$	293.09
306 LOMOND CT	EAST HELENA, MT 59635	KADLEC REBECCA I LEARY & MATTHEW JAMES	306 LOMOND CT	EAST HELENA	MT	59635-3151	\$	293.09
314 LOMOND CT	EAST HELENA, MT 59635	BANKSTON AUSTIN & SARAH	314 LOMOND CT	EAST HELENA	MT	59635	\$	293.09
275 MEADOW VIEW LOOP	EAST HELENA, MT 59635	GIESE WENDY ETAL	275 MEADOW VIEW LOOP	EAST HELENA	MT	59635-3158	\$	293.09
303 MEADOW VIEW LOOP	EAST HELENA, MT 59635	WILCHER ROBERT BOBBY & RACHEL ANN	303 MEADOW VIEW LOOP	EAST HELENA	MT	59635-3145	\$	293.09
228 MEADOW VIEW LOOP	EAST HELENA, MT 59635	PELLERITI SHERYL L TRUSTEE ETAL	228 MEADOW VIEW LOOP	EAST HELENA	MT	59635-3158	\$	293.09
202 KARNNEL CT	EAST HELENA, MT 59635	BRIGHTON CARSON JOHN & ELIZABETH	202 KARNNEL CT	EAST HELENA	MT	59635-3154	\$	293.09
215 MEADOW VIEW LOOP	EAST HELENA, MT 59635	INFINITY HOMES LLC	PO BOX 20174	BILLINGS	MT	59104-0174	\$	293.09
219 MEADOW VIEW LOOP	EAST HELENA, MT 59635	MULBERRY STEPHANIE & CHRISTOPHER	219 MEADOW VIEW LOOP	EAST HELENA	MT	59635-3158	\$	293.09
223 MEADOW VIEW LOOP	EAST HELENA, MT 59635	PECK KAYLA K & ANDREW M	223 MEADOW VIEW LOOP	EAST HELENA	MT	59635-3158	\$	293.09
214 GLENFINNAN CT	EAST HELENA, MT 59635	LEHMAN RYAN	2024 VILLARD AVE APT 1	HELENA	MT	59601-0382	\$	293.09
226 MEADOW VIEW LOOP	EAST HELENA, MT 59635	HEAREN ANDREW N & THERESA	226 MEADOW VIEW LOOP	EAST HELENA	MT	59635-3158	\$	293.09
191 MEADOW VIEW LOOP	EAST HELENA, MT 59635	OLIN HOMES MT LLC	9301 NE 117TH AVE	VANCOUVER	WA	98662-2414	\$	293.09
218 MEADOW VIEW LOOP	EAST HELENA, MT 59635	CHARLTON BRET A ETAL	218 MEADOW VIEW LOOP	EAST HELENA	MT	59635-3158	\$	293.09

Property Address	City, State, Zip Code	Property Owner	Owner Mailing Address	Owner City	Owner State	Owner Zip Code	Yearly Assessment	
203 MEADOW VIEW LOOP	EAST HELENA, MT 59635	MORGAN CHRISTOPHER JOHN & HEATHER MICHELE	203 MEADOW VIEW LOOP	EAST HELENA	MT	59635-3158	\$	293.09
202 MEADOW VIEW LOOP	EAST HELENA, MT 59635	COLEMAN MONICA LYNN & ERIC WILLIAM	202 MEADOW VIEW LOOP	EAST HELENA	MT	59635-3158	\$	293.09
234 MEADOW VIEW LOOP	EAST HELENA, MT 59635	NETTO TODD WILLIAM	234 MEADOW VIEW LOOP	EAST HELENA	MT	59635-3158	\$	293.09
209 KARNNEL CT	EAST HELENA, MT 59635	GRIFFITH MATTHEW & CHANDRA	6695 MCLEOD LN NE	KEIZER	OR	97303-1977	\$	293.09
208 MEADOW VIEW LOOP	EAST HELENA, MT 59635	BELEY BRYCE L	208 MEADOW VIEW LOOP	EAST HELENA	MT	59635-3158	\$	293.09
253 MEADOW VIEW LOOP	EAST HELENA, MT 59635	MIHM TRISTAN CODY & COURTNEY MARIE	253 MEADOW VIEW LOOP	EAST HELENA	MT	59635-3158	\$	293.09
208 GLENFINNAN CT	EAST HELENA, MT 59635	HENSLER SADIE	2019 LIVINGSTON AVE APT 46	HELENA	MT	59601-3217	\$	293.09
210 GLENFINNAN CT	EAST HELENA, MT 59635	RAE ELIZABETH	1855 EASY ST	HELENA	MT	59601-1173	\$	293.09
196 MEADOW VIEW LOOP	EAST HELENA, MT 59635	VON CLAUSBRUCH CLAUDIUS CRAMER & AIMEE CRAMER	3475 PENNY LN	HELENA	MT	59602-9187	\$	293.09
183 MEADOW VIEW LOOP	EAST HELENA, MT 59635	GEBHARDT DEVELOPMENT LLC	7880 FOWLER LN	BOZEMAN	MT	59718-8314	\$	293.09
199 MEADOW VIEW LOOP	EAST HELENA, MT 59635	STAPP ETHAN R & JENNIE N	199 MEADOW VIEW LOOP	EAST HELENA	MT	59635	\$	293.09
215 GLENFINNAN CT	EAST HELENA, MT 59635	JOHNSON CAMERON	1695 STABLE RD	HELENA	MT	59602-7510	\$	293.09
268 STIRLING LOOP	EAST HELENA, MT 59635	LINTON DENISE	268 STIRLING LOOP	EAST HELENA	MT	59635-3162	\$	293.09
179 MEADOW VIEW LOOP	EAST HELENA, MT 59635	BURKE KIMBERLY & SEAN C	179 MEADOW VIEW LOOP	EAST HELENA	MT	59635-3159	\$	293.09
180 MEADOW VIEW LOOP	EAST HELENA, MT 59635	ERICKSON TANNER A	180 MEADOW VIEW LOOP	EAST HELENA	MT	59635-3159	\$	293.09
214 MEADOW VIEW LOOP	EAST HELENA, MT 59635	MORRIS KAYLA M	214 MEADOW VIEW LOOP	EAST HELENA	MT	59635-3158	\$	293.09
247 MEADOW VIEW LOOP	EAST HELENA, MT 59635	SCUDERI KEVIN J	247 MEADOW VIEW LOOP	EAST HELENA	MT	59635-3158	\$	293.09
218 GLENFINNAN CT	EAST HELENA, MT 59635	LYNN CASSANDRA	3818 BEECHNUT ST APT 16	EAST HELENA	MT	59635-3422	\$	293.09
188 MEADOW VIEW LOOP	EAST HELENA, MT 59635	COVER LEON & ACHINEE	188 MEADOW VIEW LOOP	EAST HELENA	MT	59635-3159	\$	293.09
187 MEADOW VIEW LOOP	EAST HELENA, MT 59635	BUSHNELL PAUL	187 MOUNTAIN VIEW LOOP	EAST HELENA	MT	59635	\$	293.09
222 GLENFINNAN CT	EAST HELENA, MT 59635	KACKLEY AMBER SHANE	2922 VILLAGE RD	HELENA	MT	59602-9595	\$	293.09
210 KARNNEL CT	EAST HELENA, MT 59635	DAY JOYCE A	210 KARNNEL CT	EAST HELENA	MT	59635-3154	\$	293.09
211 GLENFINNAN CT	EAST HELENA, MT 59635	NELSON DEVON	PO BOX 9623	HELENA	MT	59604-9623	\$	293.09
212 KARNNEL CT	EAST HELENA, MT 59635	WOODWELL JOHN M ETAL	212 KARNNEL CT	EAST HELENA	MT	59635-3154	\$	293.09
270 STIRLING LOOP	EAST HELENA, MT 59635	FORSMAN BRYCE ETAL	270 STIRLING LOOP	EAST HELENA	MT	59635-3162	\$	293.09
265 MEADOW VIEW LOOP	EAST HELENA, MT 59635	WOODSON RONALD LEE & THERESA	265 MEADOW VIEW LOOP	EAST HELENA	MT	59635-3158	\$	293.09
259 MEADOW VIEW LOOP	EAST HELENA, MT 59635	MATTFELDT JULI & JAY	259 MEADOW VIEW LOOP	EAST HELENA	MT	59635-3158	\$	293.09
201 KARNNEL CT	EAST HELENA, MT 59635	BALLWEBER TYLER	201 KARNNEL CT	EAST HELENA	MT	59635-3154	\$	293.09
211 MEADOW VIEW LOOP	EAST HELENA, MT 59635	PAPPAS CARTER CHRIS ETAL	211 MEADOW VIEW LOOP	EAST HELENA	MT	59635-3158	\$	293.09
266 MEADOW VIEW LOOP	EAST HELENA, MT 59635	HUFFMAN CHRISTOPHER & THERESA	266 MEADOW VIEW LOOP	EAST HELENA	MT	59635-3158	\$	293.09
205 KARNNEL CT	EAST HELENA, MT 59635	MCLEAN DUSTIN J & KELSEY M	205 KARNNEL CT	EAST HELENA	MT	59635-3154	\$	293.09
195 MEADOW VIEW LOOP	EAST HELENA, MT 59635	COMBS KAYLA J	195 MEADOW VIEW LOOP	EAST HELENA	MT	59635-3159	\$	293.09
268 MEADOW VIEW LOOP	EAST HELENA, MT 59635	RUST HAROLD L IV	268 MEADOW VIEW LOOP	EAST HELENA	MT	59635-3158	\$	293.09
239 MEADOW VIEW LOOP	EAST HELENA, MT 59635	LEHNERT CHRISTIAN STACY & KRISTI MARIE	239 MEADOW VIEW LOOP	EAST HELENA	MT	59635-3158	\$	293.09
207 MEADOW VIEW LOOP	EAST HELENA, MT 59635	PENNELL EVAN SCOTT & ALICIA LYNNE	207 MEADOW VIEW LOOP	EAST HELENA	MT	59635-3158	\$	293.09
208 KARNNEL CT	EAST HELENA, MT 59635	STREIT JILLIEN J & TYLER G	PO BOX 465	CHESTER	MT	59522-0465	\$	293.09
206 GLENFINNAN CT	EAST HELENA, MT 59635	DINWIDDLE DEREK	1840 CHESTNUT ST	HELENA	MT	59601-1116	\$	293.09
213 GLENFINNAN CT	EAST HELENA, MT 59635	REIMUND GABRIELLE	1071 ROAD RUNNER ST UNIT 718	HELENA	MT	59602-0511	\$	293.09
220 GLENFINNAN CT	EAST HELENA, MT 59635	STORM CORAL	220 GLENFINNAN CT	EAST HELENA	MT	59635	\$	293.09
264 MEADOW VIEW LOOP	EAST HELENA, MT 59635	LAKE KYLE C	264 MEADOW VIEW LOOP	EAST HELENA	MT	59635-3158	\$	293.09
211 KARNNEL CT	EAST HELENA, MT 59635	BICKERS BONNIE ETAL	211 KARNNEL CT	EAST HELENA	MT	59635-3154	\$	293.09
230 MEADOW VIEW LOOP	EAST HELENA, MT 59635	TRASLAVINA DEVON & SHELBY	230 MEADOW VIEW LOOP	EAST HELENA	MT	59635-3158	\$	293.09
260 MEADOW VIEW LOOP	EAST HELENA, MT 59635	HARDING SMOKEY ELISE & DEREK	260 MEADOW VIEW LOOP	EAST HELENA	MT	59635-3158	\$	293.09
203 KARNNEL CT	EAST HELENA, MT 59635	MCPAHON MARY ANNE	203 KARNNEL CT	EAST HELENA	MT	59635-3154	\$	293.09
243 MEADOW VIEW LOOP	EAST HELENA, MT 59635	BICKERS LEE MARK	243 MEADOW VIEW LOOP	EAST HELENA	MT	59635-3158	\$	293.09
267 MEADOW VIEW LOOP	EAST HELENA, MT 59635	MCPAHON TANNER	267 MEADOW VIEW LOOP	EAST HELENA	MT	59635-3158	\$	293.09
227 MEADOW VIEW LOOP	EAST HELENA, MT 59635	STINSON CHRISTINE L	227 MEADOW VIEW LOOP	EAST HELENA	MT	59635-3158	\$	293.09
238 MEADOW VIEW LOOP	EAST HELENA, MT 59635	DEGN ZACHARY H & EMILY M	238 MEADOW VIEW LOOP	EAST HELENA	MT	59635-3158	\$	293.09
182 MEADOW VIEW LOOP	EAST HELENA, MT 59635	GREENBERG MARK & ANDREA	182 MEADOW VIEW LOOP	EAST HELENA	MT	59635-3159	\$	293.09
204 KARNNEL CT	EAST HELENA, MT 59635	HEIMES DAVID	PO BOX 7855	HELENA	MT	59604-7855	\$	293.09
176 MEADOW VIEW LOOP	EAST HELENA, MT 59635	PAFFHAUSEN TAMERA L	176 MEADOW VIEW LOOP	EAST HELENA	MT	59635-3159	\$	293.09
233 MEADOW VIEW LOOP	EAST HELENA, MT 59635	GAMBLE DAVID P ETAL	233 MEADOW VIEW LOOP	EAST HELENA	MT	59635-3158	\$	293.09
269 STIRLING LOOP	EAST HELENA, MT 59635	GOODHART KATHARINE ELISE ETAL	269 STIRLING LOOP	EAST HELENA	MT	59635	\$	293.09
206 KARNNEL CT	EAST HELENA, MT 59635	TAYLOR CHARLES P II & BRENDA L	206 KARNNEL CT	EAST HELENA	MT	59635-3154	\$	293.09
212 GLENFINNAN CT	EAST HELENA, MT 59635	HAMILTON NICOLE	5620 CANYON FERRY RD	EAST HELENA	MT	59635-9777	\$	293.09
219 GLENFINNAN CT	EAST HELENA, MT 59635	LOCKETT KATHERINE	219 GLENFINNAN CT	EAST HELENA	MT	59635	\$	293.09
244 STIRLING LOOP	EAST HELENA, MT 59635	TREEFORT INVESTMENTS LLC	3550 BITTERROOT RD	MANHATTAN	MT	59741-8569	\$	293.09
238 STIRLING LOOP	EAST HELENA, MT 59635	BALD EAGLE LAND INC	753 NICOLE ST	HELENA	MT	59601-9700	\$	293.09
260 STIRLING LOOP	EAST HELENA, MT 59635	HIGHLAND MEADOWS LLC	175 N 27TH ST STE 940	BILLINGS	MT	59101-2048	\$	293.09
262 STIRLING LOOP	EAST HELENA, MT 59635	INFINITY HOMES LLC	PO BOX 20174	BILLINGS	MT	59104-0174	\$	293.09
222 STIRLING LOOP	EAST HELENA, MT 59635	R G LIVING TRUST &	222 STIRLING LOOP	EAST HELENA	MT	59635-3162	\$	293.09

Property Address	City, State, Zip Code	Property Owner	Owner Mailing Address	Owner City	Owner State	Owner Zip Code	Yearly Assessment
228 STIRLING LOOP	EAST HELENA, MT 59635	HIGHLAND MEADOWS LLC	175 N 27TH ST STE 940	BILLINGS	MT	59101-2048	\$ 293.09
229 STIRLING LOOP	EAST HELENA, MT 59635	BILLINGS BEST BUILDERS LLC	2059 GLENEAGLES BLVD	BILLINGS	MT	59105-2124	\$ 293.09
221 STIRLING LOOP	EAST HELENA, MT 59635	BILLINGS BEST BUILDERS LLC	2259 GLENEAGLES BLVD	BILLINGS	MT	59105-2020	\$ 293.09
175 MEADOW VIEW LOOP	EAST HELENA, MT 59635	HIGHLAND MEADOWS LLC	175 N 27TH ST STE 940	BILLINGS	MT	59101-2048	\$ 293.09
156 MEADOW VIEW LOOP	EAST HELENA, MT 59635	HIGHLAND MEADOWS LLC	175 N 27TH ST STE 940	BILLINGS	MT	59101-2048	\$ 293.09
257 STIRLING LOOP	EAST HELENA, MT 59635	HIGHLAND MEADOWS LLC	175 N 27TH ST STE 940	BILLINGS	MT	59101-2048	\$ 293.09
240 STIRLING LOOP	EAST HELENA, MT 59635	HIGHLAND MEADOWS LLC	175 N 27TH ST STE 940	BILLINGS	MT	59101-2048	\$ 293.09
230 STIRLING LOOP	EAST HELENA, MT 59635	OLIN HOMES (MT) LLC	9301 NE 117TH AVE	VANCOUVER	WA	98662-2414	\$ 293.09
254 STIRLING LOOP	EAST HELENA, MT 59635	HIGHLAND MEADOWS LLC	175 N 27TH ST STE 940	BILLINGS	MT	59101-2048	\$ 293.09
220 STIRLING LOOP	EAST HELENA, MT 59635	ADVANCED DEVELOPMENT LLC	5059 WUNSCH DR	HELENA	MT	59602-8411	\$ 293.09
210 STIRLING LOOP	EAST HELENA, MT 59635	ALPINE HOME BUILDERS LLC	2800 SPOKANE CREEK RD	EAST HELENA	MT	59635-9724	\$ 293.09
208 STIRLING LOOP	EAST HELENA, MT 59635	HIGHLAND MEADOWS LLC	175 N 27TH ST STE 940	BILLINGS	MT	59101-2048	\$ 293.09
167 MEADOW VIEW LOOP	EAST HELENA, MT 59635	HIGHLAND MEADOWS LLC	175 N 27TH ST STE 940	BILLINGS	MT	59101-2048	\$ 293.09
171 MEADOW VIEW LOOP	EAST HELENA, MT 59635	HIGHLAND MEADOWS LLC	175 N 27TH ST STE 940	BILLINGS	MT	59101-2048	\$ 293.09
205 STIRLING LOOP	EAST HELENA, MT 59635	HELENA AREA HABITAT FOR HUMANITY	PO BOX 459	HELENA	MT	59624-0459	\$ 293.09
243 STIRLING LOOP	EAST HELENA, MT 59635	INFINITY HOME LLC	PO BOX 20174	BILLINGS	MT	59104-0174	\$ 293.09
236 STIRLING LOOP	EAST HELENA, MT 59635	BALD EAGLE LAND INC	753 NICOLE ST	HELENA	MT	59601-9700	\$ 293.09
246 STIRLING LOOP	EAST HELENA, MT 59635	SLAPNICHER JENNIFER & JACOB	246 STIRLING LOOP	EAST HELENA	MT	59635-3162	\$ 293.09
212 STIRLING LOOP	EAST HELENA, MT 59635	ALPINE HOME BUILDERS LLC	2800 SPOKANE CREEK RD	EAST HELENA	MT	59635-9724	\$ 293.09
214 STIRLING LOOP	EAST HELENA, MT 59635	ALPINE HOME BUILDERS LLC	2800 SPOKANE CREEK RD	EAST HELENA	MT	59635-9724	\$ 293.09
204 STIRLING LOOP	EAST HELENA, MT 59635	HELENA AREA HABITAT FOR HUMANITY	PO BOX 459	HELENA	MT	59624-0459	\$ 293.09
158 MEADOW VIEW LOOP	EAST HELENA, MT 59635	HIGHLAND MEADOWS LLC	175 N 27TH ST STE 940	BILLINGS	MT	59101-2048	\$ 293.09
253 STIRLING LOOP	EAST HELENA, MT 59635	OLIN HOMES MT LLC	9301 NE 117TH AVE	VANCOUVER	WA	98662-2414	\$ 293.09
215 STIRLING LOOP	EAST HELENA, MT 59635	GEBHARDT DEVELOPMENT LLC	7535 ROUGHSAWN DR	HELENA	MT	59602-8285	\$ 293.09
174 MEADOW VIEW LOOP	EAST HELENA, MT 59635	BILLINGS BEST BUILDERS LLC	2259 GLENEAGLES BLVD	BILLINGS	MT	59105-2020	\$ 293.09
213 STIRLING LOOP	EAST HELENA, MT 59635	HELENA AREA HABITAT FOR HUMANITY	PO BOX 459	HELENA	MT	59624-0459	\$ 293.09
239 STIRLING LOOP	EAST HELENA, MT 59635	SCHILL DOUG	6916 APPLGATE DR	HELENA	MT	59602-9407	\$ 293.09
258 STIRLING LOOP	EAST HELENA, MT 59635	HIGHLAND MEADOWS LLC	175 N 27TH ST STE 940	BILLINGS	MT	59101-2048	\$ 293.09
266 STIRLING LOOP	EAST HELENA, MT 59635	INFINITY HOME LLC	PO BOX 20174	BILLINGS	MT	59104-0174	\$ 293.09
252 STIRLING LOOP	EAST HELENA, MT 59635	HIGHLAND MEADOWS LLC	175 N 27TH ST STE 940	BILLINGS	MT	59101-2048	\$ 293.09
160 MEADOW VIEW LOOP	EAST HELENA, MT 59635	HIGHLAND MEADOWS LLC	175 N 27TH ST STE 940	BILLINGS	MT	59101-2048	\$ 293.09
259 STIRLING LOOP	EAST HELENA, MT 59635	4 MT HOMES INC	PO BOX 51366	BILLINGS	MT	59105-1361	\$ 293.09
159 MEADOW VIEW LOOP	EAST HELENA, MT 59635	INFINITY HOME LLC	PO BOX 20174	BILLINGS	MT	59104-0174	\$ 293.09
245 STIRLING LOOP	EAST HELENA, MT 59635	HIGHLAND MEADOWS LLC	175 N 27TH ST STE 940	BILLINGS	MT	59101-2048	\$ 293.09
232 STIRLING LOOP	EAST HELENA, MT 59635	GEBHARDT DEVELOPMENT LLC	7535 ROUGHSAWN DR	HELENA	MT	59602-8285	\$ 293.09
248 STIRLING LOOP	EAST HELENA, MT 59635	HIGHLAND MEADOWS LLC	175 N 27TH ST STE 940	BILLINGS	MT	59101-2048	\$ 293.09
250 STIRLING LOOP	EAST HELENA, MT 59635	HIGHLAND MEADOWS LLC	175 N 27TH ST STE 940	BILLINGS	MT	59101-2048	\$ 293.09
242 STIRLING LOOP	EAST HELENA, MT 59635	TREEFORT INVESTMENTS LLC	3550 BITTERROOT RD	MANHATTAN	MT	59741-8569	\$ 293.09
218 STIRLING LOOP	EAST HELENA, MT 59635	GEBHARDT DEVELOPMENT LLC	7535 ROUGHSAWN DR	HELENA	MT	59602-8285	\$ 293.09
224 STIRLING LOOP	EAST HELENA, MT 59635	INFINITY HOME LLC	PO BOX 20174	BILLINGS	MT	59104-0174	\$ 293.09
226 STIRLING LOOP	EAST HELENA, MT 59635	HIGHLAND MEADOWS LLC	175 N 27TH ST STE 940	BILLINGS	MT	59101-2048	\$ 293.09
219 STIRLING LOOP	EAST HELENA, MT 59635	HIGHLAND MEADOWS LLC	175 N 27TH ST STE 940	BILLINGS	MT	59101-2048	\$ 293.09
172 MEADOW VIEW LOOP	EAST HELENA, MT 59635	HIGHLAND MEADOWS LLC	175 N 27TH ST STE 940	BILLINGS	MT	59101-2048	\$ 293.09
217 STIRLING LOOP	EAST HELENA, MT 59635	GEBHARDT DEVELOPMENT LLC	7535 ROUGHSAWN DR	HELENA	MT	59602-8285	\$ 293.09
163 MEADOW VIEW LOOP	EAST HELENA, MT 59635	INFINITY HOME LLC	PO BOX 20174	BILLINGS	MT	59104-0174	\$ 293.09
251 STIRLING LOOP	EAST HELENA, MT 59635	OLIN HOMES MT LLC	9301 NE 117TH AVE	VANCOUVER	WA	98662-2414	\$ 293.09
155 MEADOW VIEW LOOP	EAST HELENA, MT 59635	HIGHLAND MEADOWS LLC	175 N 27TH ST STE 940	BILLINGS	MT	59101-2048	\$ 293.09
225 STIRLING LOOP	EAST HELENA, MT 59635	4 MT HOMES INC	PO BOX 51366	BILLINGS	MT	59105-1361	\$ 293.09
237 STIRLING LOOP	EAST HELENA, MT 59635	HIGHLAND MEADOWS LLC	175 N 27TH ST STE 940	BILLINGS	MT	59101-2048	\$ 293.09
249 STIRLING LOOP	EAST HELENA, MT 59635	INFINITY HOME LLC	PO BOX 20174	BILLINGS	MT	59104-0174	\$ 293.09
256 STIRLING LOOP	EAST HELENA, MT 59635	HIGHLAND MEADOWS LLC	175 N 27TH ST STE 940	BILLINGS	MT	59101-2048	\$ 293.09
216 STIRLING LOOP	EAST HELENA, MT 59635	ALPINE HOME BUILDERS LLC	2800 SPOKANE CREEK RD	EAST HELENA	MT	59635-9724	\$ 293.09
264 STIRLING LOOP	EAST HELENA, MT 59635	INFINITY HOMES LLC	PO BOX 20174	BILLINGS	MT	59104-0174	\$ 293.09
231 STIRLING LOOP	EAST HELENA, MT 59635	GEBHARDT GEORGE	18 N FORK RD	TOWNSEND	MT	59644-9640	\$ 293.09
265 STIRLING LOOP	EAST HELENA, MT 59635	4 MT HOMES INC	PO BOX 51366	BILLINGS	MT	59105-1361	\$ 293.09
241 STIRLING LOOP	EAST HELENA, MT 59635	HIGHLAND MEADOWS LLC	175 N 27TH ST STE 940	BILLINGS	MT	59101-2048	\$ 293.09

Total Yearly Assessment: \$ 70,049.28

Exhibit C - Cost Estimate

Highland Meadows Phase 1-4 SID				
Street Improvement District Costs 6/23/2025		<div>Lots: 239 SY Asphalt in Phases: 39,053</div>		
COST ESTIMATE				
	<u>ITEM</u>	<u>QUAN.</u>	<u>UNIT</u>	<u>UNIT PRICE</u> <u>TOTAL PRICE</u>
	Snow Plowing	39,053	SY	\$ 0.16 \$ 6,248.48
	Snow Removal from Culdesacs	25	HR	\$ 220.00 \$ 5,500.00
	Sanding	39,053	SY	\$ 0.08 \$ 3,124.24
	Chip Sealing	39,053	SY	\$ 0.81 \$ 31,632.93
	Crack Sealing	39,053	SY	\$ 0.05 \$ 1,952.65
	Curb & Sidewalk Repair	1	LS	\$ 1,000.00 \$ 1,000.00
	Crosswalk Maintenance	1	LS	\$ 500.00 \$ 500.00
	Catch Basin Cleaning	19	EA	\$ 200.00 \$ 3,800.00
	Storage Pond Maintenance	11	EA	\$ 750.00 \$ 8,250.00
	Street Sign Maintenance	1	LS	\$ 200.00 \$ 200.00
	County Street Sweeping	39,053	SY	\$ 0.10 \$ 3,905.30
	City Administration Fee	1	LS	\$ 100.00 \$ 100.00
	Improvement District Creation (7 Years)	1	LS	\$ 500.00 \$ 500.00
Sub Total SID Cost - 2025				\$ 66,713.60
Lewis & Clark County 5% Administration Fee				\$ 3,335.68
Total Yearly Cost				\$ 70,049.28
Yearly Cost per Lot (239 Lots)				\$ 293.09
Cost per Lot per 6 Months				\$ 146.55
Cost per Lot per Month				\$ 24.42

CITY OF EAST HELENA
306 E MAIN ST / PO BOX 1170
EAST HELENA, MT 59635
(406) 227-5321

ORIGINAL COUNCIL MEETING DATE: 08/05/2025

Agenda item:

Resolution to Modify Existing Street Maintenance District No. 201

From:

City Attorney Elverum

Initiated by City: ☒ YES ☐ NO (check one)

Department:

Roads & Streets

Presented by:

Council President Dahl

Action requested:

Approve/Deny/Table

PLEASE PROVIDE A NARRATIVE BACKGROUND OF THE PROPOSED AGENDA ITEM:

Vigilante Street Maintenance District 201

Attachment:

Resolution 627

Attachments: ☒ YES ☐ NO (check one)

Date submitted:

RECOMMENDATIONS:

Approve for agenda:

☐ YES

☐ NO

Initial:

Referred to Dept. Head for resolution:

☐ YES

☐ NO

Referred to _____:

☐ YES

☐ NO

Agenda requests must be submitted to East Helena City Hall by noon the Wednesday prior to the Tuesday council meeting.

RESOLUTION NO. 627

A RESOLUTION OF THE CITY COUNCIL OF THE CITY OF EAST HELENA, MONTANA, RELATING TO STREET MAINTENANCE DISTRICT NO. 201; CREATING THE DISTRICT FOR THE PURPOSE OF UNDERTAKING LOCAL MAINTENANCE AND IMPROVEMENTS TO THE INTERNAL STREETS OF PHASES 1, 2, AND 3 OF VIGILANTE SUBDIVISION AND ASSESSING THE COSTS THEREFOR

WHEREAS, on the 1st day of July, 2025, the City Council (the “Council”) of the City of East Helena, Montana (the “City”) adopted Resolution 623 (the “Resolution of Intention”), stating its intent to create Street Maintenance District No. 201 (the “District”) to finance the costs of maintenance and improvements within the District as described therein (the “Improvements”); and

WHEREAS, on July 19th and August 2nd, 2025, the City Clerk did publish a Notice of Passage of the Resolution of Intention to Create Street Maintenance District No. 201 in accordance with Sect. 7-12-4106, and Sect. 7-12-4426, MCA, and mailed said notice to each person, firm, or corporation having real property within the proposed District; and

WHEREAS, the East Helena City Council conducted a public hearing on protests submitted to the creation and assessment of the District on August 5, 2025 and did pass on all such protests having found the written protests not sufficient to bar the Council from proceeding with the creation and assessment of the District.

NOW, THEREFORE, BE IT RESOLVED BY THE CITY COUNCIL OF THE CITY OF EAST HELENA, MONTANA;

Section 1. Passage of Resolution of Intention. This Council, on July 1, 2025, adopted Resolution of Intention 623, pursuant to which the Council declared its intention to create the District, under Montana Code Annotated Title 7, Chapter 12, Parts 41, 42, and 44, as amended, for the purpose of financing costs of certain local improvements and maintenance within the District described generally therein (the “improvements”), and paying the costs incidental thereto, including costs associated with the creation and administration of the District.

Section 2. Notice of Passage of the Resolution of Intention. Notice of passage of the Resolution of Intention was duly published and mailed to all respects in accordance with law, and on August 5th, 2025, this Council conducted a public hearing on written protests submitted by property owners against the creation and assessment of the District and the making of the Improvements. The public hearing occurred on the date of the first regular meeting of the Council following the expiration of the period ended 15 days after the first date of publication of the notice of passage of the Resolution of Intention (the “protest period”).

Section 3. Protests. Within the Protest Period, no protests were filed with the City Clerk by the property owners.

Section 4. Creation of the District; Insufficiency of Protests. The Council

determines the District is hereby created and assessed on the terms and conditions set forth in and otherwise in accordance with, the Resolution of Intention. The protests against the creation and assessment of the District or the making of the Improvements filed during the Protest Period are hereby found to be insufficient. The findings and determinations made in the Resolution of Intention, including, without limitation those relating to benefits conferred and the costs associated with the creation and administration of the District, are hereby ratified, and confirmed.

Section 5. Boundaries of District. The limits and boundaries of the District are depicted by the continuous line circumscribing the exterior boundaries of the properties shown on the map attached as Exhibit A hereto (which is hereby incorporated herein and made a part hereof) and includes all those lots and parcels on Ashley Avenue, Lizzy Street, and Sarah Avenue, descriptions of which are contained in Exhibit B hereto (which is hereby incorporated herein and made a part hereof), which boundaries are designated and confirmed as the boundaries of the District.

Section 6. Benefited Property. The District and territory included within the limits and boundaries described in Section 5 and shown on Exhibit A and Exhibit B are hereby declared to be the street maintenance district and the territory that will benefit from and be benefitted by the Improvements and will be assessed for a portion of the costs of the Improvements described herein. The property included within said limits and boundaries is hereby declared to be the property benefitted by the Improvements.

Section 7. Engineer and Estimated Cost. The City, acting through its contract engineering firm, shall be the engineer for the District. The Engineer has estimated the initial annual costs of the Improvements to be \$19,254.31, as shown on Exhibit C, attached hereto (and hereby incorporated herein and made a part hereof). The District's costs of the Improvements are shown on Exhibit B (which is hereby incorporated herein and made a part hereof).

Section 8. Assessment Method.

8.1 Property To Be Assessed. All properties in the District will be assessed for their proportionate share of the costs of the Improvements plus Incidental Costs from which they derive a benefit as determined and set forth herein. The Improvements plus Incidental Costs shall be assessed against the property in the District benefiting from these Improvements, based on the method authorized by Section 7-12-4422(2)(c), M.C.A., as particularly applied and set forth in Section 8.2 hereof.

8.2 Equal Assessment To Each Lot. The Improvements within the District plus Incidental Costs will be assessed equally to each lot or parcel located within the district without regard to assessable area of the lot or parcel. The city council has determined that the benefits derived from the Improvements by each lot or parcel are substantially equivalent given that each lot or parcel is a single-family residence with similar expected estimated vehicle trips generated.

8.3 Assessment Methodology Equitable and Consistent with Benefit. This Council hereby determines that the method of assessment described above and the assessment of costs of the

Districts Improvements against the properties benefitted thereby as prescribed in Section 8.2 are equitable and in proportion to and not exceeding the special benefits derived from the Improvements by the lots, tracts and parcels to be assessed therefore within the District.

Passed, by the City Council of the City of East Helena, Montana, and approved by the Mayor this 5th day of August 2025.

Kelly Harris, Mayor

ATTEST:

Amy Thorngren, City Clerk-Treasurer

CERTIFICATE AS TO RESOLUTION AND ADOPTING VOTE

I, the undersigned, being the duly qualified and acting recording officer of the City of East

Helena, Montana (the “City”) hereby certify that the attached resolution is a true copy of Resolution No. 627, entitled: “A RESOLUTION OF THE CITY COUNCIL OF THE CITY OF EAST HELENA, MONTANA, RELATING TO STREET MAINTENANCE DISTRICT NO. 201; CREATING THE DISTRICT FOR THE PURPOSE OF UNDERTAKING LOCAL MAINTENANCE AND IMPROVEMENTS TO THE INTERNAL STREETS OF PHASES 1, 2, AND 3 OF VIGILANTE SUBDIVISION AND ASSESSING THE COSTS THEREFOR” (the “Resolution”), on file in the original records of the City in my legal custody; that the Resolution was duly adopted by the City Council of the City at a meeting on August 5th, 2025, and that the meeting was duly held by the City Council and was attended throughout by a quorum, pursuant to call and notice of such meeting given as required by law; and that the Resolution has not as of the date hereof been amended or repealed.

I further certify that, upon vote being taken on the Resolution at said meeting, the following Council Members voted in favor thereof: _____

_____;

voted against the same: _____;

abstained from voting thereon: _____;

or were absent: _____.

WITNESS my hand officially this ____ day of _____, 2025.

City Clerk



LEGEND



PARCELS



SID BOUNDARY



Map Created by:
**ROBERT PECCIA &
ASSOCIATES**
www.rpa-hln.com

125 0 125 250
(SCALE IN FEET)

VIGILANTE SUBDIVISION
PHASE ONE, TWO AND THREE STREET IMPROVEMENT DISTRICT
8/5/25 Council Packet Page 44 **EXHIBIT A**

Exhibit B - Assessment

Property Address	City, State, Zip Code	Property Owner	Owner Mailing Address	Address Line 2	Owner City	Owner State	Owner Zip Code	Yearly Assessment
2800 ASHLEY AVE	EAST HELENA, MT 59635	BRUNO DANIEL & KACI L GAUB-	2800 ASHLEY AVE		EAST HELENA	MT	59635-3368	\$ 283.15
3277 LIZZY ST	EAST HELENA, MT 59635	ROCK ENTERPRISES INC	260 LYNDALDE LN		BUTTE	MT	59701-7519	\$ 283.15
2804 ASHLEY AVE	EAST HELENA, MT 59635	CARSON GEOFF & KELI	2804 ASHLEY AVE		EAST HELENA	MT	59635-3368	\$ 283.15
2889 ASHLEY AVE	EAST HELENA, MT 59635	TOLSON TERENCE & BAILEY	2889 ASHLEY AVE		EAST HELENA	MT	59635-3370	\$ 283.15
2853 ASHLEY AVE	EAST HELENA, MT 59635	HOWELL TEDI	2853 ASHLEY AVE		EAST HELENA	MT	59635-3370	\$ 283.15
2856 ASHLEY AVE	EAST HELENA, MT 59635	MCNICOL JAMES A & CYNTHIA	2856 ASHLEY AVE		EAST HELENA	MT	59635-3368	\$ 283.15
2868 ASHLEY AVE	EAST HELENA, MT 59635	PELTOMAA TAMARA J	PO BOX 940		EAST HELENA	MT	59635-0940	\$ 283.15
2871 ASHLEY AVE	EAST HELENA, MT 59635	MOHLER JASON E & JACKIE F	2871 ASHLEY AVE		EAST HELENA	MT	59635-3370	\$ 283.15
2859 ASHLEY AVE	EAST HELENA, MT 59635	ZIMMERMAN CONSTRUCTION LLC	PO BOX 9786		HELENA	MT	59604-9786	\$ 283.15
2862 ASHLEY AVE	EAST HELENA, MT 59635	CHANDLER BLAKE & TERESA JOAN	2862 ASHLEY AVE		EAST HELENA	MT	59635-3368	\$ 283.15
2849 SARAH AVE	EAST HELENA, MT 59635	WELLS RICHARD & MARY JO	2849 SARAH AVE		EAST HELENA	MT	59635	\$ 283.15
3270 LIZZY ST	EAST HELENA, MT 59635	MONGOVEN TARALEE ETAL	3270 LIZZY ST		EAST HELENA	MT	59635-3508	\$ 283.15
2837 SARAH AVE	EAST HELENA, MT 59635	WOLLITZ LISA & JEREMY	2837 SARAH AVE		EAST HELENA	MT	59635-4140	\$ 283.15
ASHLEY AVE	EAST HELENA, MT 59635	VIGILANTE DEVELOPERS LLC	3440 CENTENNIAL DR		HELENA	MT	59601-9769	\$ 283.15
2835 ASHLEY AVE	EAST HELENA, MT 59635	HANSEN EUGENE & LEE	2835 ASHLEY AVE		EAST HELENA	MT	59635-3370	\$ 283.15
3286 ASHLEY AVE	EAST HELENA, MT 59635	DAVIS DOYLE	806 STANLEY ST		HELENA	MT	59601-3306	\$ 283.15
2820 ASHLEY AVE	EAST HELENA, MT 59635	GROVOM FAMILY TRUST	2820 ASHLEY AVE		EAST HELENA	MT	59635-3368	\$ 283.15
2810 ASHLEY AVE	EAST HELENA, MT 59635	NELSON JON WAYNE	2810 ASHLEY AVE		EAST HELENA	MT	59635-3368	\$ 283.15
2817 ASHLEY AVE	EAST HELENA, MT 59635	MARTINEZ KURT MICHAEL & SHANNON ANN	2817 ASHLEY AVE		EAST HELENA	MT	59635-3370	\$ 283.15
2823 ASHLEY AVE	EAST HELENA, MT 59635	TENNANT JAYLENE	2823 ASHLEY ST		EAST HELENA	MT	59635	\$ 283.15
2801 ASHLEY AVE	EAST HELENA, MT 59635	RUSOFF DAVID & KELLY & JOHN	173 BRIARWOOD LN		HELENA	MT	59601-0174	\$ 283.15
3278 LIZZY ST	EAST HELENA, MT 59635	OTOLLS MARISA	3278 LIZZY ST		EAST HELENA	MT	59635-3508	\$ 283.15
2824 ASHLEY AVE	EAST HELENA, MT 59635	MCGILL JOSEPH & LINDSEY	2824 ASHLEY AVE		EAST HELENA	MT	59635-3368	\$ 283.15
2814 ASHLEY AVE	EAST HELENA, MT 59635	HANSING JAMI	2814 ASHLEY AVE		EAST HELENA	MT	59635-3368	\$ 283.15
2883 ASHLEY AVE	EAST HELENA, MT 59635	BATES SZYMANSKI MARIA	2883 ASHLEY AVE		EAST HELENA	MT	59635-3370	\$ 283.15
2865 ASHLEY AVE	EAST HELENA, MT 59635	SPI ASHLEY LLC	1403 PUTTERS PL		FREELAND	WA	98249-9648	\$ 283.15
2811 ASHLEY AVE	EAST HELENA, MT 59635	DELISE SEAN R & CARLY E	2811 ASHLEY AVE		EAST HELENA	MT	59635-3370	\$ 283.15
2805 ASHLEY AVE	EAST HELENA, MT 59635	BROWN JULIE ANN	2805 ASHLEY AVE		EAST HELENA	MT	59635-3370	\$ 283.15
3269 LIZZY ST	EAST HELENA, MT 59635	VOEGELY RYAN & STEPHANIE	3269 LIZZY ST		EAST HELENA	MT	59635	\$ 283.15
3285 LIZZY ST	EAST HELENA, MT 59635	KING LINDSEY & COLTON	3285 LIZZY ST		EAST HELENA	MT	59635-3508	\$ 283.15
2895 ASHLEY AVE	EAST HELENA, MT 59635	COLEMAN ALLISON & JOHN	2895 ASHLEY AVE		EAST HELENA	MT	59635-3370	\$ 283.15
2877 ASHLEY AVE	EAST HELENA, MT 59635	LUCERO JOSHUA & JILL	2877 ASHLEY AVE		EAST HELENA	MT	59635-3370	\$ 283.15
2841 ASHLEY AVE	EAST HELENA, MT 59635	HUOT ANTHONY & JULIANNE	2841 ASHLEY AVE		EAST HELENA	MT	59635-3370	\$ 283.15
2847 ASHLEY AVE	EAST HELENA, MT 59635	WILSON KYLE P	2847 ASHLEY AVE		EAST HELENA	MT	59635	\$ 283.15
2829 ASHLEY AVE	EAST HELENA, MT 59635	MOLENDAD ADAM W ET AL	2829 ASHLEY AVENUE		EAST HELENA	MT	59635	\$ 283.15
2802 SARAH AVE	EAST HELENA, MT 59635	GIACOMELLI SADIE & PAULO	2802 SARAH AVE		EAST HELENA	MT	59635-4140	\$ 283.15
2834 SARAH AVE	EAST HELENA, MT 59635	BENNETT LYNNE MARIE	2834 SARAH AVE		EAST HELENA	MT	59635-4140	\$ 283.15
2822 SARAH AVE	EAST HELENA, MT 59635	UMSTED TROY & KERSTIE	2822 SARAH AVE		EAST HELENA	MT	59635-4140	\$ 283.15
2816 SARAH AVE	EAST HELENA, MT 59635	PFISTERER ROEY & CHRISTINA	2816 SARAH AVE		EAST HELENA	MT	59635-4140	\$ 283.15
2813 SARAH AVE	EAST HELENA, MT 59635	DAY JAMES R & CHERYL L	2813 SARAH AVE		EAST HELENA	MT	59635-4140	\$ 283.15
2801 SARAH AVE	EAST HELENA, MT 59635	WIDHALM KELLI & MATTHEW	2801 SARAH AVE		EAST HELENA	MT	59635-4140	\$ 283.15
2846 SARAH AVE	EAST HELENA, MT 59635	KESSLER BRIAN	2846 SARAH AVE		EAST HELENA	MT	59635-4140	\$ 283.15
2831 SARAH AVE	EAST HELENA, MT 59635	STROMBERG KEITH HOWARD ORVIL & JOCELYN CRYSTAL	2831 SARAH AVE		EAST HELENA	MT	59635-4140	\$ 283.15
2819 SARAH AVE	EAST HELENA, MT 59635	WILLERFORD SUZY	2819 SARAH AVE		EAST HELENA	MT	59635-4140	\$ 283.15
2828 SARAH AVE	EAST HELENA, MT 59635	PUGH KATIE ETAL	2828 SARAH AVE		EAST HELENA	MT	59635-4140	\$ 283.15
2808 SARAH AVE	EAST HELENA, MT 59635	AUKER JENNIFER & DAVID	2808 SARAH AVE		EAST HELENA	MT	59635-4140	\$ 283.15
2807 SARAH AVE	EAST HELENA, MT 59635	JOKI ROBERT JOSEPH & JENNA LOUISE	2807 SARAH AVE		EAST HELENA	MT	59635-4140	\$ 283.15
2825 SARAH AVE	EAST HELENA, MT 59635	DANIELSON REED ETAL	C/O MARK MATTHEW MOZZONI & PORTIA MARIA ANDERSON	2825 SARAH AVE	EAST HELENA	MT	59635	\$ 283.15
2900 ASHLEY AVE	EAST HELENA, MT 59635	VIGILANTE DEVELOPERS LLC	2785 ELKVIEW RD		EAST HELENA	MT	59635-3045	\$ 283.15
2878 ASHLEY AVE	EAST HELENA, MT 59635	WAGNER COREY & LEXI	2878 ASHLEY AVE		EAST HELENA	MT	59635-3368	\$ 283.15
2852 SARAH AVE	EAST HELENA, MT 59635	ZIMMERMAN CONSTRUCTION LLC	PO BOX 9786		HELENA	MT	59604-9786	\$ 283.15
2867 SARAH AVE	EAST HELENA, MT 59635	LEUTHARD BEN	4712 BAJA RD		HELENA	MT	59602-9668	\$ 283.15
2888 ASHLEY AVE	EAST HELENA, MT 59635	GEBHARDT DEVELOPMENT LLC	7535 ROUGHSAWN DR		HELENA	MT	59602-8285	\$ 283.15
2879 SARAH AVE	EAST HELENA, MT 59635	VIGILANTE DEVELOPERS LLC	2785 ELKVIEW RD		EAST HELENA	MT	59635-3045	\$ 283.15
2892 ASHLEY AVE	EAST HELENA, MT 59635	RISMON WENDY J	2892 ASHLEY AVE		EAST HELENA	MT	59635-3368	\$ 283.15
2884 ASHLEY AVE	EAST HELENA, MT 59635	ZIMMERMAN CONSTRUCTION LLC	PO BOX 9786		HELENA	MT	59604-9786	\$ 283.15
2864 SARAH AVE	EAST HELENA, MT 59635	TRENARY MARK & GAYLE	2864 SARAH AVE		EAST HELENA	MT	59635-4140	\$ 283.15
2896 ASHLEY AVE	EAST HELENA, MT 59635	DANKERS BRIAN & SHERRI	2896 ASHLEY AVE		EAST HELENA	MT	59635-3368	\$ 283.15
2895 SARAH AVE	EAST HELENA, MT 59635	SPEARSON JAKE	2785 ELKVIEW RD		EAST HELENA	MT	59635-3045	\$ 283.15
2874 ASHLEY AVE	EAST HELENA, MT 59635	HARMS GAIL S ETAL	2874 ASHLEY AVE		EAST HELENA	MT	59635-3368	\$ 283.15
2885 SARAH AVE	EAST HELENA, MT 59635	HOULE JOSEF	2885 SARAH AVE		EAST HELENA	MT	59635-4140	\$ 283.15
2865 SARAH AVE	EAST HELENA, MT 59635	GEBHARDT DEVELOPMENT LLC	7535 ROUGHSAWN DR		HELENA	MT	59602-8285	\$ 283.15
2870 SARAH AVE	EAST HELENA, MT 59635	VIGILANTE DEVELOPERS LLC	2785 ELKVIEW RD		EAST HELENA	MT	59635-3045	\$ 283.15
2858 SARAH AVE	EAST HELENA, MT 59635	KIRICHENKO YEVEGENLY & TAMARA	2858 SARAH AVE		EAST HELENA	MT	59635-4140	\$ 283.15
2889 SARAH AVE	EAST HELENA, MT 59635	BULLSEYE CONSTRUCTION INC	PO BOX 4938		HELENA	MT	59604-4938	\$ 283.15
2855 SARAH AVE	EAST HELENA, MT 59635	PETERSON TUCKER & HEATHER	2855 SARAH AVE		EAST HELENA	MT	59635-4140	\$ 283.15
2873 SARAH AVE	EAST HELENA, MT 59635	SCHWEITZER LENNY	921 LODESTAR RD		HELENA	MT	59602-7599	\$ 283.15
2861 SARAH AVE	EAST HELENA, MT 59635	STONE KAYANN V ETAL	2861 SARAH AVE		EAST HELENA	MT	59635-4140	\$ 283.15

Total Yearly Assessment: \$ 19,254.31

Exhibit C - Cost Estimate

Vigilante Subdivision Phase 1-3 SID					
Street Improvement District Costs 6/23/2025		<div>Lots: 68</div> <div>SY Asphalt in Phases: 16,008</div>			
COST ESTIMATE					
	<u>ITEM</u>	<u>QUAN.</u>	<u>UNIT</u>	<u>UNIT PRICE</u>	<u>TOTAL PRICE</u>
	Snow Plowing	16,008	SY	\$ 0.11	\$ 1,760.88
	Sanding	16,008	SY	\$ 0.09	\$ 1,440.72
	Chip Sealing	16,008	SY	\$ 0.50	\$ 8,004.00
	Crack Sealing	16,008	SY	\$ 0.03	\$ 480.24
	Curb & Sidewalk Repair	1	LS	\$ 1,000.00	\$ 1,000.00
	Crosswalk Maintenance	1	LS	\$ 500.00	\$ 500.00
	Catch Basin Cleaning	2	EA	\$ 200.00	\$ 400.00
	Storage Pond Maintenance	1	EA	\$ 750.00	\$ 750.00
	Street Sign Maintenance	1	LS	\$ 200.00	\$ 200.00
	County Street Sweeping	16,008	SY	\$ 0.20	\$ 3,201.60
	City Administration Fee	1	LS	\$ 100.00	\$ 100.00
	Improvement District Creation (7 Years)	1	LS	\$ 500.00	\$ 500.00
Sub Total SID Cost - 2025					\$ 18,337.44
Lewis & Clark County 5% Administration Fee					\$ 916.87
Total Yearly Cost					\$ 19,254.31
Yearly Cost per Lot (68 Lots)					\$ 283.15
Cost per Lot per 6 Months					\$ 141.58
Cost per Lot per Month					\$ 23.60

MEETING MINUTES
CITY OF EAST HELENA
CITY HALL – 306 EAST MAIN - ROOM 110
COUNCIL MEETING: 6:30 PM
DATE: TUESDAY, JULY 15, 2025
JOIN ZOOM MEETING: <https://us06web.zoom.us/j/3787705872>
CONFERENCE CALL-IN: 1-253-205-0468 MEETING ID: 378 770 5872

MEETING CALLED TO ORDER: Mayor Harris called the meeting to order at 6:30 p.m. Councilmember Leland led the Pledge of Allegiance.

CITY OFFICIALS & STAFF PRESENT: Mayor Kelly Harris, Council President Don Dahl (via Zoom), Councilmember Judy Leland, Councilmember Wesley Feist, Councilmember Suzanne Ferguson, Clerk/Treasurer Amy Thorngren, City Attorney Pete Elverum, Public Works Director Kevin Ore, Deputy Police Chief Ed Royce, and Fire Chief Roger Campbell

PUBLIC PRESENT: Austin Young and Denis Young

ABSENT/EXCUSED: City Judge Dennis Loveless and Police Chief Mike Sanders

(0:00:25) PUBLIC COMMENTS: Written public comment from Julie Stoner in opposition to speeding was on the council room table.

(0:00:55) APPROVAL OF MINUTES: The draft minutes of the July 1, 2025 meeting were included in the council packet. There was no public comment. Councilmember Feist made a motion to approve the minutes as presented. Councilmember Leland seconded the motion. The motion passed unanimously.

CITY COURT REPORT: City Judge Dennis Loveless was excused.

DEPARTMENTAL REPORTS:

(0:01:30) Administration – Invitations to Council from the Montana Wool Growers Association Lamb Jam and the Lewis and Clark Library Foundation board meeting were included in the council packet. Clerk/Treasurer Amy Thorngren reported that the admin department had been working on the FY26 budget and that nearly \$100,000 in building permit revenue was received in the first half of 2025.

(0:02:45) Police Department – A written report was on the council room table. Deputy Police Chief Ed Royce reported that Officer Buissereth had been sworn in on July 8th, Officer Zack Butler was on his last week of field training, and Officer Kyle Butler was completing firearms instructor training. He noted that the officers had been working as many as 11 consecutive days to cover staff shortages and the rodeo. He discussed speeding in East Helena as had been reported on the local news.

(0:09:50) Public Works – A written report was included in the council packet. Public Works Director Kevin Ore reported that the RAS-WAS gate at the wastewater treatment plant failed and was repaired, the chlorine feeder at the swimming pool will be replaced, the draft BUILD (RAISE) grant application has been resubmitted, City Hall’s water service needs to be replaced, and that an old abandoned water service line on a vacant lot had ruptured and was being removed.

Volunteer Fire Department - Fire Chief Roger Campbell had been called out on an emergency by this time.

NEW BUSINESS:

1. **(0:17:00) City of East Helena Engineering Standards** – The draft engineering standards were included in the council packet. Public Works Director Ore noted that the revised standards added commercial garbage can rack specifications, updated water and sewer EDU calculations, a looped water main requirement, a 400-foot maximum distance between fire hydrants, a 200-foot maximum water service line length, a paving requirement for alleys/carriage lanes, and updated paint-striping and crosswalk material specifications. There was no public comment. Councilmember Feist made a motion to approve the engineering standards. Councilmember Leland seconded the motion. The motion passed unanimously.
2. **(0:21:50) Appointment of Molly Holahan to the East Helena Planning Board** – MCA 76-1-221 was included in the council packet. Mayor Harris recommended Molly Holahan’s appointment and noted that positions on other boards are also available. There was no public comment. Councilmember Leland made a motion to appoint Molly Holahan to the Planning Board. Councilmember Ferguson seconded the motion. The motion passed unanimously.
3. **(0:22:55) Kleffner Ranch Offer to Purchase JFK Park Walking Bridge Frame** – Austin Young offered to purchase the unused bridge for \$2,500.00 and relocate it at his own expense. Council discussed the offer. There was no public comment. Councilmember Feist made a motion to sell the bridge to the Kleffner Ranch for \$2,500.00. Councilmember Ferguson seconded the motion. The motion passed unanimously.

(0:32:20) MAYOR’S REPORT: Mayor Harris reported that he attended the rodeo, the rodeo parade, the food truck festival, and the smeltermen’s picnic. He had met with the lieutenant governor regarding water rights and had been interviewed by the Boulder Monitor, KTVH, and a radio station. He reported that the Greenfield Environmental Trust Group had won a EPA Phoenix Award for their work at the former ASARCO smelter site.

COUNCILMEMBERS’ REPORTS:

Don Dahl had nothing to report.

Judy Leland had nothing to report.

(0:35:20) Wesley Feist reported that he attended the final Montana Opioid Abatement Trust meeting. He expressed his appreciation of Council's contribution to the annual fireworks show.

(0:37:50) Suzanne Ferguson reported that she attended the food truck festival, the fireworks show, and the rodeo including the parade.

(0:38:30) LEGAL REPORT: City Attorney Elverum emphasized that speeding was being rigorously enforced by the police department and reported that he was filling in on a case for the City of Helena.

(0:40:00) PAYMENT OF BILLS: Claims 298970 through 299000 were presented for Council's review. Councilmember Leland made a motion to pay the bills. Councilmember Feist seconded the motion. The motion passed unanimously.

MEETING SCHEDULE:

1. East Helena City Council Meeting, Tuesday, August 5, 6:30 p.m., City Hall Rm 110
2. East Helena City Council Meeting, Tuesday, August 19, 6:30 p.m., City Hall Rm 110

ADJOURNMENT: Mayor Harris adjourned the meeting at 7:10 pm.

ATTEST:

Clerk/Treasurer

Mayor

CITY COURT REPORT FOR JUNE, 2025

RECEIPTS \$8,980.30


PAYMENTS

CITY TREASURER \$6,255.50

COUNTY TREASURER 1,304.80

RESTITUTION & OVERPMT 1,420.00

RESPECTFULLY SUBMITTED


DENNIS LOVELESS, CITY JUDGE

RECEIVED
JUL 16 2025
CITY CLERK/TREASURER
EAST HELENA, MT



Public Works Department

Proud to serve our Community

August 5th, 2025

1.) WWTP Report

- Shane has been working with city engineer Jeremy Perlinski on the mixed liquor being so high at wastewater plant. They have determined this is being caused by the sludge build up that is in the sludge basin. We will be working on pumping the water down in this basin and trying to wash some of the build up down to be able to run this waste through the sludge thickening building. This wash down process will result in abnormal odors for appx one week at the plant site. We have notified surrounding residents of the maintenance work being performed. (Discuss)
- Construction on headworks building and screw augers continues. Waiting on results of concrete break tests.
- Mockel Excavation is replacing the sewer line in the intersection of Valley and Groschell this week. Helena Sand will repave this intersection the week of Aug. 18th. (Discuss)
- Transducers failed at K&R lift station. Had to replace both level transducers.
- Setting up a meeting with DEQ for the ground water permit application.
- Working with Town Pump and some issues with their lift station pumping capacities.

2.) Metal Removal Building

- We had multiple power surges and outages over the last couple of weeks at the wastewater plant with all the thunderstorms. The non-pot water VFD pressure control switch was damaged during one of these outages. Had to have MET replace the damaged switch.

3.) Source Water Report

- The RTU/PLC (Remote Terminal Unit/Programmable Logic Controller) panel that controls all the SCADA and pump operations for the entire Wylie well system failed. This equipment is from the late 90's and parts to repair are no longer available. We had to install new RTU/PLC panel. Est of cost is \$60K, we are using some of funding that was set to do Wylie system upgrades. (Discuss)
- We had an electrical panel issue we believe was caused by a lightning strike at the M.C. Creek #2 caisson. We had to replace the damaged electrical panel.
- Lewis Street Water Main Replacement is all completed.
- M.C. Creek water tank mixer has been repaired and is shipped back to us. Crews will be reinstalling this equipment in the next week or so.
- Crews dug and abandoned the unknown water service that was located (and Leaking) in the 400 and 500 block of Groschell.
- We will be digging and replacing a failed water valve in the intersection of Valley Drive and Dudley the week of August 11th. (Discuss)

4.) Solid Waste Report

- Internal discussion about Republic Garbage Service. Attorney Elverum is reviewing solid waste contracts. (more to come on this)

5.) Parks

- Parks look great and have been very busy. (Thanks Steve and Declan for all the hard work.)

6.)Pool

- New chlorine chemical feeder is installed and working great.
- Have had multiple short-term closures of pool due to bad weather.

7.)Streets

- Crews are still repainting crosswalks and curbs.

8.)Facilities

- City Halls water service has been repaired.
- A/C is installed at the Rec. Hall.

9.)Resident/City Information and Events

- Next food truck event is August 14th.
- I attended Habitat for Humanity housing home dedication celebration with Mayor Harris, Council Member Dahl and Leland. (This was a great event)

CITY OF EAST HELENA
306 E MAIN ST / PO BOX 1170
EAST HELENA, MT 59635
(406) 227-5321

ORIGINAL COUNCIL MEETING DATE: 08/05/2025

Agenda item:

227 Days

From:

Eagles 4040

Initiated by City: ☐ YES ☒ NO (check one)

Department:

Community Events

Presented by:

Eagles 4040

Action requested:

Approve/Deny/Table

PLEASE PROVIDE A NARRATIVE BACKGROUND OF THE PROPOSED AGENDA ITEM:

On September 6th, (same day as J4 Block Party), Eagles with to hold another 227 Days party in Main Street Park. Morning hours will involve cleaning up lawn overgrowth of bricks around pavilion, and setting any new bricks. After that is complete, we will have kids games, food and craft vendors, flea mart tables, charitable organizations information booths, and the Eagles will cater a open bar. We will have live music and a birthday cake for East Helena.

Kids games will include balloon toss, corn hole, three legged race, face painting, and a Dunking booth (if available).

Our intent is to grow 227 Days to be the size of Clancy Days, and eventually find a way to "touch" the block party.

Attachments: ☐ YES ☒ NO (check one)

Date submitted:

17 July 2025

RECOMMENDATIONS:

Initial:

Approve for agenda:

☐ YES

☐ NO

Referred to Dept. Head for resolution:

☐ YES

☐ NO

Referred to _____:

☐ YES

☐ NO

Agenda requests must be submitted to East Helena City Hall by noon the Wednesday prior to the Tuesday council meeting.

CITY OF EAST HELENA
306 E MAIN ST / PO BOX 1170
EAST HELENA, MT 59635
(406) 227-5321

ORIGINAL COUNCIL MEETING DATE: 08/05/2025

Agenda item:

East Helena Christmas Stroll

From:

Stacia Winslow

Initiated by City: ☐ YES ☒ NO (check one)

Department:

City Hall

Presented by:

Stacia Winslow

Action requested:

Approval to be in the park for East Helena Christmas Stroll

PLEASE PROVIDE A NARRATIVE BACKGROUND OF THE PROPOSED AGENDA ITEM:

I am requesting to be in the park next to J4 automotive for the East Helena Christmas Stroll this year. I have been in this location for the past 4 years and it has been very successful for me.

Attachments: ☐ YES ☒ NO (check one)

Date submitted:

July 30, 2025

RECOMMENDATIONS:

Initial:

Approve for agenda:

☐ YES

☐ NO

Referred to Dept. Head for resolution:

☐ YES

☐ NO

Referred to _____:

☐ YES

☐ NO

Agenda requests must be submitted to East Helena City Hall by noon the Wednesday prior to the Tuesday council meeting.

CITY OF EAST HELENA
306 E MAIN ST / PO BOX 1170
EAST HELENA, MT 59635
(406) 227-5321

ORIGINAL COUNCIL MEETING DATE: 08/05/2025

Agenda item:

Resolution 628 Authorizing the Sale of Surplus Property

From:

Public Works Director Ore

Initiated by City: ☒ YES ☐ NO (check one)

Department:

Public Works

Presented by:

Public Works Director Ore

Action requested:

Approve / Deny / Table

PLEASE PROVIDE A NARRATIVE BACKGROUND OF THE PROPOSED AGENDA ITEM:

Draft Resolution 628 is attached.

Attachments: ☒ YES ☐ NO (check one)

Date submitted:

July 30, 2025

RECOMMENDATIONS:

Approve for agenda:

☐ YES

☐ NO

Initial:

Referred to Dept. Head for resolution:

☐ YES

☐ NO

Referred to _____:

☐ YES

☐ NO

Agenda requests must be submitted to East Helena City Hall by noon the Wednesday prior to the Tuesday council meeting.

RESOLUTION NO. 628
A RESOLUTION AUTHORIZING THE SALE OF SURPLUS
PROPERTY OWNED BY THE CITY OF EAST HELENA, MONTANA

WHEREAS, 7-8-4201, MCA, provides that a City Council may sell, dispose of, or lease any property belonging to the City; and

WHEREAS, the City of East Helena owns the following property:

1. 1999 Freightliner FL80 Garbage Truck – Vin # 1FVXJBB4YHB13373
2. 1985 GMC Dump Truck – Vin # 1GDM7D1G4FV631986
3. 1971 Galion T-500 Motor Grader -
4. Trackless Vehicle Limited, Series 5 Model # MT5T Serial # 1407
 - (1) Rotary Snow Blower
 - (2) Rotary Broom
 - (3) Straight Plow Blade
5. Brush Bandit Woodchipper – Model # VG4D2 Serial # 95050418
6. Kohler Generator – Model #55RZ72 Serial # 112826

WHEREAS, the City has determined it has no need for this property; and

WHEREAS, it appears to be in the best interest of the City of East Helena and the inhabitants thereof that this property be declared as scrap surplus and sold for scrap.

Now, THEREFORE, BE IT RESOLVED BY THE CITY COUNCIL OF THE CITY OF EAST HELENA, MONTANA:

Section 1. The above-described property is declared to be surplus property.

Section 2. That the above listed items have been appraised and determined to be of scrap value.

Passed, by the City Council of the City of East Helena, Montana, and approved by the Mayor this 5th day of August, 2025.

Kelly Harris, Mayor

ATTEST:

Amy Thorngren, City Clerk/Treasurer