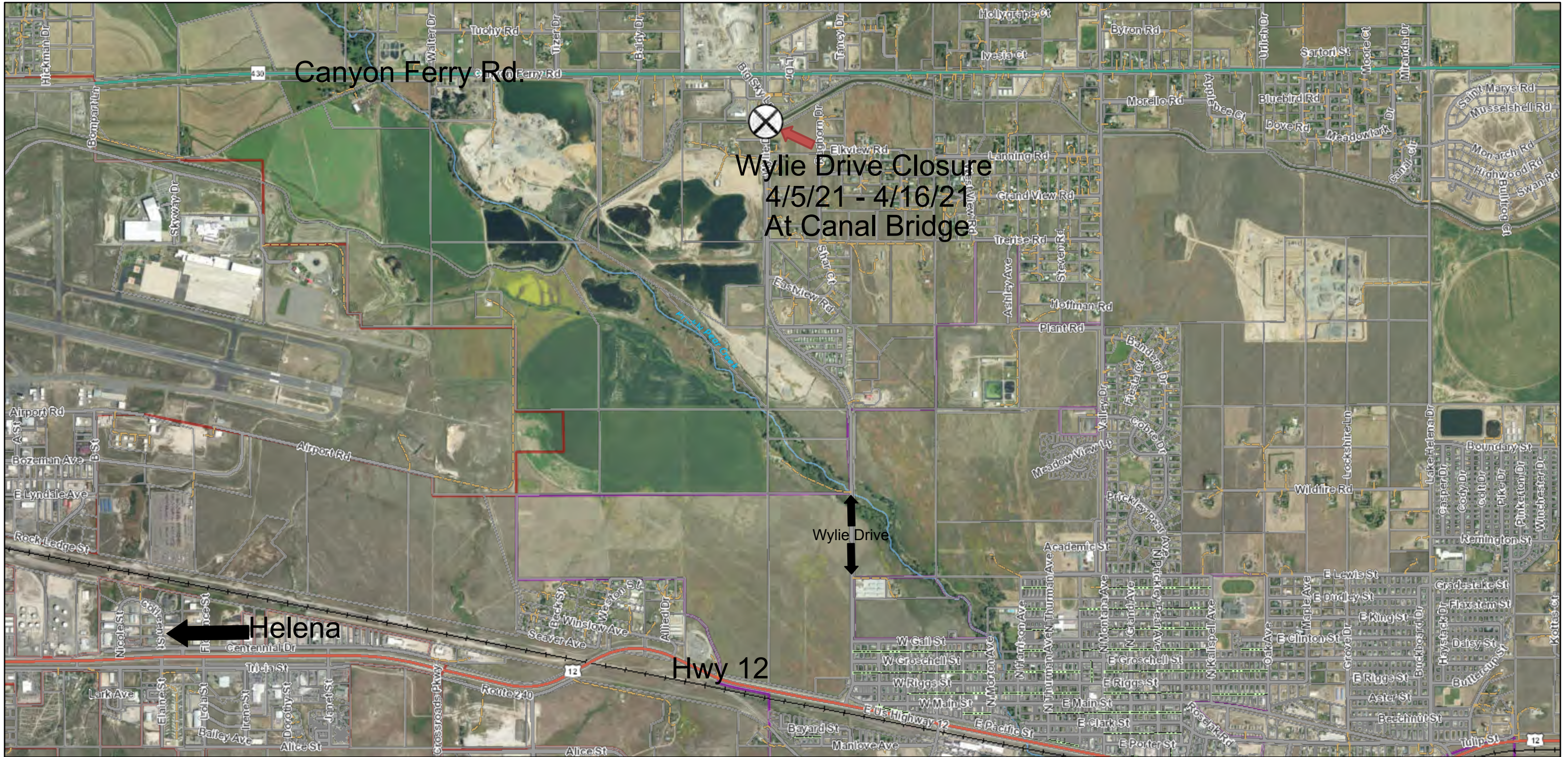


Wylie Drive Closed to Through Traffic April 5th - April 16th, 2021

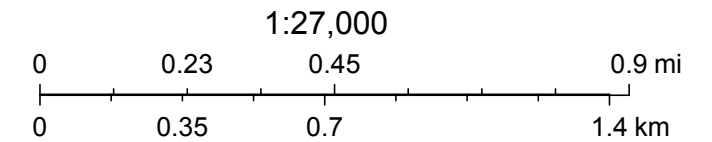


Wylie Drive Closed To Through Traffic April 5th - April 16th, 2021 for Bridgework

Wylie Drive from Big Sky Loop to Cottage Road will be closed to through traffic for extensive concrete repairs on the Canal Bridge. Resident access will be open. Closure is planned from April 5th through April 16th.

The bridge is next to Raghorn Drive and residents may access their properties from either Canyon Ferry or the East Helena side depending on which side of the bridge they are on.

Barricades will be up and must be obeyed. For questions, contact the Lewis and Clark County Road and Bridge Department at 406-447-8031.



Source: Esri, Maxar, GeoEye, Earthstar Geographics, CNES/Airbus DS, USDA, USGS, AeroGRID, IGN, and the GIS User Community, Sources: Esri, Airbus DS, USGS, NGA, NASA, CGIAR, N Robinson, NCEAS, NLS, OS, NMA, Geodatastyrelsen, Rijkswaterstaat, GSA, Geoland, FEMA, Intermap and the GIS user community, Lewis and

Web AppBuilder for ArcGIS