

City of East Helena
Office of the City Clerk/Treasurer
PO Box 1170
306 Main Street, Room 103
East Helena, MT 59635
406-227-5321



July 19, 2023

Notice of passage of resolution of intent to modify the Special Improvement Lighting District No. 101, notice of right to protest, and notice of public hearing on Tuesday, August 15, 2023

Dear Property Owner:

Special Improvement Lighting District No. 101

On Tuesday, August 15, 2023 at 6:30 p.m., the East Helena City Council ("Council") will hold a public hearing to consider written protests to the modification of the Special Improvement Lighting District No. 101 ("District") for the purpose of installing and maintaining street lighting within Phases I and II of Highland meadows Subdivision. You are being mailed this letter and the accompanying public notice because you are considered an owner of real property within the proposed district.

At a public council meeting on July 18, 2023, the Council adopted Resolution 587, a resolution of intention to modify Special Improvement Lighting District No. 101. Attached to this letter you will find a copy of the notice of passage of Resolution 587. The resolution and accompanying exhibits are on file in the City Clerk/Treasurer's Office located at City Hall, 306 East Main Street, East Helena. The resolution and accompanying exhibits may also be viewed on the Public Notices page of the City's website at www.easthelenamt.us. The District, if modified, will comprise the area shown on Exhibit A of Resolution 587 (attached) and will be for the purpose of installing and maintaining street lighting within Phases I and II of Highland meadows Subdivision.

If modified, the costs of the District will be assessed bi-annually to all owners of real property within the District equally. Total assessment amounts by parcel can be found in Exhibit B (attached). If modified, Resolution 587 levying the assessment will be considered for adoption on Tuesday, August 15, 2023 at 6:30 pm in Room 110 of City Hall and you will have an opportunity to object to the adoption of Resolution 587 at that public hearing. A copy of Resolution 587 is on file and subject to inspection in the City Clerk's Office.

Owners of property have 15 days from July 22, 2023 to make a written protest against the modification of the District. Written protests against the modification of District 101 must be filed by an owner of real property within the proposed District whose property is liable to be assessed for the improvements. Such protests must be delivered to the City Clerk at the City Hall, located at 306 East Main Street, East Helena, Montana, 59635, or by mail to P.O. Box 1170, East Helena, Montana 59635, not later than 5:00 p.m., M.T., on Monday, August 7, 2023.

For more information on the modification of the District please contact me at 406-227-5321.

Sincerely,

Amy Thorngren
City of East Helena Clerk/Treasurer

RESOLUTION NO. 587

A RESOLUTION OF INTENTION TO MODIFY SPECIAL IMPROVEMENT LIGHTING DISTRICT NO. 101 IN THE CITY OF EAST HELENA, MONTANA.

WHEREAS, §7-12-4301, et seq., MCA, allowed the City of East Helena to create special improvement lighting district No. 101; and

WHEREAS, §7-12-4351, et seq., MCA, authorizes the City of East Helena to modify an existing special improvement lighting district by changing the number and spacing of lights and making other modifications required by the public interest and conveniences; and

WHEREAS, §7-12-4335, et seq., MCA, authorizes the City of East Helena to change by resolution the boundaries of Special Improvement Lighting District No. 101 along the arterial streets and avenues in Phases I and II of the Highland Meadows Subdivision; and

WHEREAS, it appears to be in the best interests of the City of East Helena, and the inhabitants thereof, specifically the inhabitants of the area to be known as Special Improvement Lighting District No. 101, that said Special Improvement Lighting District No. 101 be modified.

BE IT RESOLVED BY THE CITY COUNCIL OF THE CITY OF EAST HELENA, MONTANA:

SECTION 1. That it is the intention of the City Council of the City of East Helena, Montana, to modify Special Improvement Lighting District No. 101 in the City of East Helena for the purpose of installing and maintaining street lighting in Phase II of Highland Meadows Subdivision, more particularly described on Exhibit "A" attached hereto and by this reference made a part hereof.

SECTION 2. The boundaries of said Special Improvement Lighting District No. 101 shall be as described on Exhibit "B" attached hereto.

SECTION 3. The general character of the improvements and modifications to be made in said district is the installation and maintenance of an additional four (4) lighting units with underground wiring, fiberglass poles with 16-foot mounting heights, and an additional four (4) luminaries with 42-watt LED lamps in Phase II of Highland Meadows Subdivision.

SECTION 4. The estimated total cost of maintaining said improvements, supplying electrical energy, and administration therefor for the first year is \$3,505.32, with the estimated annual cost being \$31.08 per property owned, said amount to be paid by the property owners. That amount includes the additional assessment to be charged by the City to establish a cash reserve and recover any costs of the district incurred prior to receipt of the first assessments.

SECTION 5. All the costs of installing and maintaining said lighting shall be borne by the owners of the property embraced within the boundaries of said district.

SECTION 6. The East Helena City Council shall hold a public hearing on said proposed modifications to Special Improvement Lighting District No. 101 in the Council Chambers, 306 E. Main Street, East Helena, Montana, at **6:30 p.m. on the 15th day of August, 2023**. At such time, all protests that may be made against proposed Special Improvement Lighting District No. 101 shall be heard.

SECTION 7 Notice of the passage of this resolution of intention shall be given by publication twice, at least six (6) days apart, in the Independent Record prior to the public hearing. Further, a copy of said notice must be mailed to each person, firm, or corporation having property within the proposed special improvement lighting district.

Passed, by the City Council of the City of East Helena, Montana, and approved by the Mayor this 18th day of August, 2023.



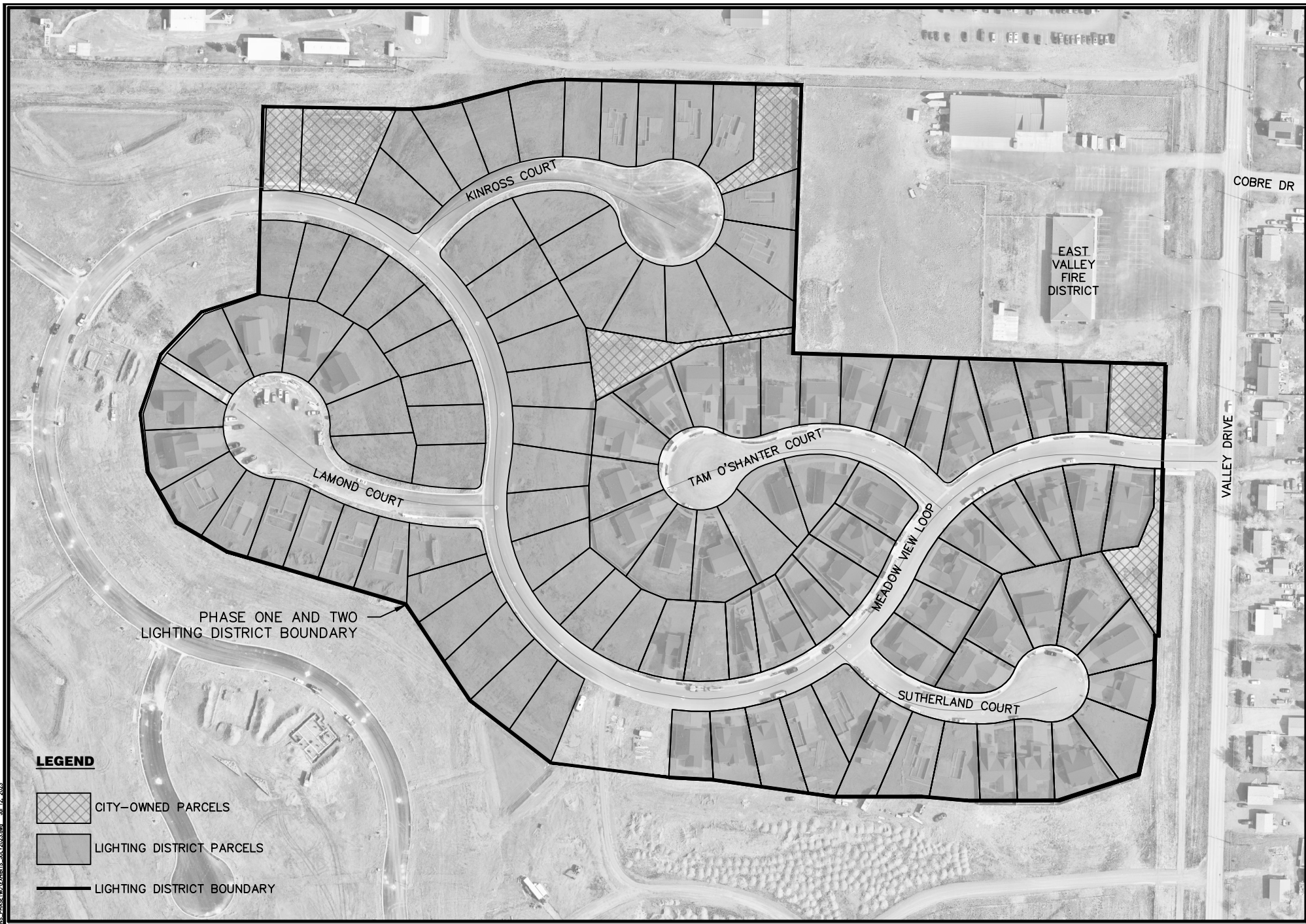
Kelly Harris, Mayor

ATTEST:






Amy Thorngren, City Clerk/Treasure





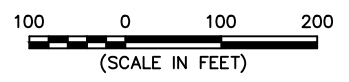
PHASE ONE AND TWO LIGHTING DISTRICT BOUNDARY

LEGEND

-  CITY-OWNED PARCELS
-  LIGHTING DISTRICT PARCELS
-  LIGHTING DISTRICT BOUNDARY



Map Created by:
ROBERT PECCIA & ASSOCIATES
 www.rpa-hln.com



**HIGHLAND MEADOWS SUBDIVISION
 PHASE ONE AND TWO LIGHTING DISTRICT
 EXHIBIT A**

C:\Users\DL\OneDrive\Documents\PHASE ONE AND TWO LIGHTING DISTRICTS - JULY 2023.dwg - JUL 12, 2023

EXHIBIT B - ASSESSMENT

Property Address	City, State, Zip Code	Property Owner	Owner Mailing Address	Owner City	Owner State	Owner Zip Code	Monthly Assessment
311 SUTHERLAND CT	EAST HELENA, MT 59635	MORRIS NATHAN T & CATHY M	311 SUTHERLAND CT	EAST HELENA	MT	59635-3146	\$ 2.59
315 SUTHERLAND CT	EAST HELENA, MT 59635	JAMISON PAMELA	315 SUTHERLAND CT	EAST HELENA	MT	59635-3146	\$ 2.59
317 SUTHERLAND CT	EAST HELENA, MT 59635	SILVER CREEK INVESTMENTS	4855 IRON HORSE RD	HELENA	MT	59602-8443	\$ 2.59
339 MEADOW VIEW LOOP	EAST HELENA, MT 59635	WINKLEPLECK LARRY & LINDA LOU	339 MEADOW VIEW LOOP	EAST HELENA	MT	59635-3145	\$ 2.59
355 MEADOW VIEW LOOP	EAST HELENA, MT 59635	WH EAST HELENA 34 LLC	21080 CENTRE POINTE PKWY	SANTA CLARITA	CA	91350-2984	\$ 2.59
319 SUTHERLAND CT	EAST HELENA, MT 59635	LOEWEN JUSTIN & TAYLOR	319 SUTHERLAND CT	EAST HELENA	MT	59635-3146	\$ 2.59
352 MEADOW VIEW LOOP	EAST HELENA, MT 59635	JOHNSON RAYMOND & KELLY	352 MEADOW VIEW LOOP	EAST HELENA	MT	59635-3145	\$ 2.59
360 MEADOW VIEW LOOP	EAST HELENA, MT 59635	MULLIKIN CONNIE	PO BOX 1784	EAST HELENA	MT	59635-1784	\$ 2.59
367 MEADOW VIEW LOOP	EAST HELENA, MT 59635	GILSON MARCY A	367 MEADOW VIEW LOOP	EAST HELENA	MT	59635-3145	\$ 2.59
317 TAM O SHANTER CT	EAST HELENA, MT 59635	CHRISTOPHERSON KURT A & DARCY J	317 TAM O SHANTER CT	EAST HELENA	MT	59635-3373	\$ 2.59
319 TAM O SHANTER CT	EAST HELENA, MT 59635	LEWIS CHRISTOPHER JAMES ETAL	319 TAM O SHANTER CT	EAST HELENA	MT	59635-3373	\$ 2.59
375 MEADOW VIEW LOOP	EAST HELENA, MT 59635	MICHAEL GLEN & SUSAN L CRAIN DECLARATION OF TRUST	375 MEADOW VIEW LOOP	EAST HELENA	MT	59635-3145	\$ 2.59
379 MEADOW VIEW LOOP	EAST HELENA, MT 59635	WELNA BENJAMIN & KATE	379 MEADOW VIEW LOOP	EAST HELENA	MT	59635-3145	\$ 2.59
320 TAM O SHANTER CT	EAST HELENA, MT 59635	CRICHTON RYAN E	320 TAM O SHANTER CT	EAST HELENA	MT	59635-3373	\$ 2.59
378 MEADOW VIEW LOOP	EAST HELENA, MT 59635	BLOOMQUIST LINDSEY RENEE & JOSEPH WILLIAM	PO BOX 125	WOLF CREEK	MT	59648-0125	\$ 2.59
306 TAM O SHANTER CT	EAST HELENA, MT 59635	LUNDY LOREN L & JULIE M	26480 W BURNETT RD	BUCKEYEE	AZ	85396-9241	\$ 2.59
300 MEADOW VIEW LOOP	EAST HELENA, MT 59635	WH EAST HELENA 34 LLC	24911 AVENUE STANFORD	VALENCIA	CA	91355-1281	\$ 2.59
205 KINCROSS CT	EAST HELENA, MT 59635	WH EAST HELENA 34 LLC	24911 AVENUE STANFORD	VALENCIA	CA	91355-1281	\$ 2.59
217 KINCROSS CT	EAST HELENA, MT 59635	WH EAST HELENA 34 LLC	24911 AVENUE STANFORD	VALENCIA	CA	91355-1281	\$ 2.59
292 MEADOW VIEW LOOP	EAST HELENA, MT 59635	WH EAST HELENA 34 LLC	24911 AVENUE STANFORD	VALENCIA	CA	91355-1281	\$ 2.59
290 MEADOW VIEW LOOP	EAST HELENA, MT 59635	WH EAST HELENA 34 LLC	24911 AVENUE STANFORD	VALENCIA	CA	91355-1281	\$ 2.59
219 KINCROSS CT	EAST HELENA, MT 59635	WH EAST HELENA 34 LLC	24911 AVENUE STANFORD	VALENCIA	CA	91355-1281	\$ 2.59
226 KINCROSS CT	EAST HELENA, MT 59635	WH EAST HELENA 34 LLC	24911 AVENUE STANFORD	VALENCIA	CA	91355-1281	\$ 2.59
224 KINCROSS CT	EAST HELENA, MT 59635	WH EAST HELENA 34 LLC	24911 AVENUE STANFORD	VALENCIA	CA	91355-1281	\$ 2.59
220 KINCROSS CT	EAST HELENA, MT 59635	WH EAST HELENA 34 LLC	24911 AVENUE STANFORD	VALENCIA	CA	91355-1281	\$ 2.59
VALLEY DR	EAST HELENA, MT 59635	WH EAST HELENA 34 LLC	24911 AVENUE STANFORD	VALENCIA	CA	91355-1281	\$ 2.59
307 LOMOND CT	EAST HELENA, MT 59635	WH EAST HELENA 34 LLC	24911 AVENUE STANFORD	VALENCIA	CA	91355-1281	\$ 2.59
320 LOMOND CT	EAST HELENA, MT 59635	WH EAST HELENA 34 LLC	24911 AVENUE STANFORD	VALENCIA	CA	91355-1281	\$ 2.59
312 LOMOND CT	EAST HELENA, MT 59635	WH EAST HELENA 34 LLC	24911 AVENUE STANFORD	VALENCIA	CA	91355-1281	\$ 2.59
279 MEADOW VIEW LOOP	EAST HELENA, MT 59635	WH EAST HELENA 34 LLC	24911 AVENUE STANFORD	VALENCIA	CA	91355-1281	\$ 2.59
275 MEADOW VIEW LOOP	EAST HELENA, MT 59635	WH EAST HELENA 34 LLC	24911 AVENUE STANFORD	VALENCIA	CA	91355-1281	\$ 2.59
313 SUTHERLAND CT	EAST HELENA, MT 59635	BLAZQUEZ ALEXANDER & VICTORIA	3516 SAVANA LN	ALAMEDA	CA	94502-7023	\$ 2.59
318 SUTHERLAND CT	EAST HELENA, MT 59635	FORD JASON & KATHY	7743 CANYON FERRY RD	HELENA	MT	59602-8518	\$ 2.59
312 SUTHERLAND CT	EAST HELENA, MT 59635	LASHLEY RONALD II	312 SUTHERLAND CT	EAST HELENA	MT	59635-3146	\$ 2.59
316 SUTHERLAND CT	EAST HELENA, MT 59635	MCCAULEY MACY & HUGH	316 SUTHERLAND CT	EAST HELENA	MT	59635	\$ 2.59
387 MEADOW VIEW LOOP	EAST HELENA, MT 59635	WH EAST HELENA 34 LLC	21080 CENTRE POINTE PKWY	SANTA CLARITA	CA	91350-2984	\$ 2.59
304 TAM O SHANTER CT	EAST HELENA, MT 59635	MERCADO RAMON E ET AL	304 TAM O SHANTER CT	EAST HELENA	MT	59635	\$ 2.59
384 MEADOW VIEW LOOP	EAST HELENA, MT 59635	WH EAST HELENA 34 LLC	21080 CENTRE POINTE PKWY	SANTA CLARITA	CA	91350-2984	\$ 2.59
271 MEADOW VIEW LOOP	EAST HELENA, MT 59635	WH EAST HELENA 34 LLC	24911 AVENUE STANFORD	VALENCIA	CA	91355-1281	\$ 2.59
204 KINCROSS CT	EAST HELENA, MT 59635	WH EAST HELENA 34 LLC	24911 AVENUE STANFORD	VALENCIA	CA	91355-1281	\$ 2.59
327 MEADOW VIEW LOOP	EAST HELENA, MT 59635	WH EAST HELENA 34 LLC	24911 AVENUE STANFORD	VALENCIA	CA	91355-1281	\$ 2.59
303 LOMOND CT	EAST HELENA, MT 59635	WH EAST HELENA 34 LLC	24911 AVENUE STANFORD	VALENCIA	CA	91355-1281	\$ 2.59
305 LOMOND CT	EAST HELENA, MT 59635	WH EAST HELENA 34 LLC	24911 AVENUE STANFORD	VALENCIA	CA	91355-1281	\$ 2.59
318 LOMOND CT	EAST HELENA, MT 59635	WH EAST HELENA 34 LLC	24911 AVENUE STANFORD	VALENCIA	CA	91355-1281	\$ 2.59
287 MEADOW VIEW LOOP	EAST HELENA, MT 59635	WH EAST HELENA 34 LLC	24911 AVENUE STANFORD	VALENCIA	CA	91355-1281	\$ 2.59
283 MEADOW VIEW LOOP	EAST HELENA, MT 59635	WH EAST HELENA 34 LLC	24911 AVENUE STANFORD	VALENCIA	CA	91355-1281	\$ 2.59
343 MEADOW VIEW LOOP	EAST HELENA, MT 59635	GIBBONS ERIC & KAYLA	343 MEADOW VIEW LOOP	EAST HELENA	MT	59635-3145	\$ 2.59
310 SUTHERLAND CT	EAST HELENA, MT 59635	BURKETT CLAY & ALESA	310 SUTHERLAND CT	EAST HELENA	MT	59635-3146	\$ 2.59
304 SUTHERLAND CT	EAST HELENA, MT 59635	CAMPBELL NICOLE	PO BOX 1844	EAST HELENA	MT	59635-1844	\$ 2.59
344 MEADOW VIEW LOOP	EAST HELENA, MT 59635	GEBHARDT COLE	145 HEREFORD DR	BELGRADE	MT	59714-8875	\$ 2.59
338 MEADOW VIEW LOOP	EAST HELENA, MT 59635	EVANS CHAD & JESSICA	338 MEADOW VIEW LOOP	EAST HELENA	MT	59635-3145	\$ 2.59
356 MEADOW VIEW LOOP	EAST HELENA, MT 59635	CHRISTIANSEN TAMARA ETAL	356 MEADOW VIEW LOOP	EAST HELENA	MT	59635-3145	\$ 2.59
321 TAM O SHANTER CT	EAST HELENA, MT 59635	GIROLAMI JOHN & SHELLEY	321 TAM O SHANTER CT	EAST HELENA	MT	59635-3373	\$ 2.59
374 MEADOW VIEW LOOP	EAST HELENA, MT 59635	SCHULTZ ROBERT B	374 MEADOW VIEW LOOP	EAST HELENA	MT	59635-3145	\$ 2.59
318 TAM O SHANTER CT	EAST HELENA, MT 59635	BARNETT DONALD & LELA GAIL	318 TAM O SHANTER CT	EAST HELENA	MT	59635-3373	\$ 2.59
380 MEADOW VIEW LOOP	EAST HELENA, MT 59635	ANTHONY JOHN D	380 MEADOW VIEW LOOP	EAST HELENA	MT	59635	\$ 2.59
334 MEADOW VIEW LOOP	EAST HELENA, MT 59635	WH EAST HELENA 34 LLC	24911 AVENUE STANFORD	VALENCIA	CA	91355-1281	\$ 2.59
318 MEADOW VIEW LOOP	EAST HELENA, MT 59635	WH EAST HELENA 34 LLC	24911 AVENUE STANFORD	VALENCIA	CA	91355-1281	\$ 2.59

EXHIBIT B - ASSESSMENT

Property Address	City, State, Zip Code	Property Owner	Owner Mailing Address	Owner City	Owner State	Owner Zip Code	Monthly Assessment
211 KINCROSS CT	EAST HELENA, MT 59635	WH EAST HELENA 34 LLC	24911 AVENUE STANFORD	VALENCIA	CA	91355-1281	\$ 2.59
206 KINCROSS CT	EAST HELENA, MT 59635	WH EAST HELENA 34 LLC	24911 AVENUE STANFORD	VALENCIA	CA	91355-1281	\$ 2.59
301 LOMOND CT	EAST HELENA, MT 59635	WH EAST HELENA 34 LLC	24911 AVENUE STANFORD	VALENCIA	CA	91355-1281	\$ 2.59
315 LOMOND CT	EAST HELENA, MT 59635	WH EAST HELENA 34 LLC	24911 AVENUE STANFORD	VALENCIA	CA	91355-1281	\$ 2.59
314 LOMOND CT	EAST HELENA, MT 59635	WH EAST HELENA 34 LLC	24911 AVENUE STANFORD	VALENCIA	CA	91355-1281	\$ 2.59
316 LOMOND CT	EAST HELENA, MT 59635	WH EAST HELENA 34 LLC	24911 AVENUE STANFORD	VALENCIA	CA	91355-1281	\$ 2.59
299 MEADOW VIEW LOOP	EAST HELENA, MT 59635	WH EAST HELENA 34 LLC	24911 AVENUE STANFORD	VALENCIA	CA	91355-1281	\$ 2.59
295 MEADOW VIEW LOOP	EAST HELENA, MT 59635	WH EAST HELENA 34 LLC	24911 AVENUE STANFORD	VALENCIA	CA	91355-1281	\$ 2.59
351 MEADOW VIEW LOOP	EAST HELENA, MT 59635	WH EAST HELENA 34 LLC	21080 CENTRE POINTE PKWY	SANTA CLARITA	CA	91350-2984	\$ 2.59
305 SUTHERLAND CT	EAST HELENA, MT 59635	CHRISTENSEN ROGNALD & LORA	305 SUTHERLAND CT	EAST HELENA	MT	59635-3146	\$ 2.59
363 MEADOW VIEW LOOP	EAST HELENA, MT 59635	WARD NATHANIEL TYLER ETAL	363 MEADOW VIEW LOOP	EAST HELENA	MT	59635-3145	\$ 2.59
315 TAM O SHANTER CT	EAST HELENA, MT 59635	GOODMAN PAUL	PO BOX 472	EAST HELENA	MT	59635-0472	\$ 2.59
364 MEADOW VIEW LOOP	EAST HELENA, MT 59635	NELSON TYLER & ASHLYN	364 MEADOW VIEW LOOP	EAST HELENA	MT	59635-3145	\$ 2.59
371 MEADOW VIEW LOOP	EAST HELENA, MT 59635	BEATY STEPHEN & SILVER	371 MEADOW VIEW LOOP	EAST HELENA	MT	59635-3145	\$ 2.59
311 TAM O SHANTER CT	EAST HELENA, MT 59635	YOUNG-SCHUYLER KURTIS ETAL	311 TAM O SHANTER CT	EAST HELENA	MT	59635-3373	\$ 2.59
322 TAM O SHANTER CT	EAST HELENA, MT 59635	HULSE ZACHARY D & MARY C	322 TAM O SHANTER CT	EAST HELENA	MT	59635-3373	\$ 2.59
314 TAM O SHANTER CT	EAST HELENA, MT 59635	HANLEY BERNARD T & MARCIA E	314 TOM O SHANTER CT	EAST HELENA	MT	59635-3373	\$ 2.59
308 TAM O SHANTER CT	EAST HELENA, MT 59635	SPRAGUE BRIAN A & BAILEY L	308 TAM O SHANTER CT	EAST HELENA	MT	59635	\$ 2.59
306 MEADOW VIEW LOOP	EAST HELENA, MT 59635	WH EAST HELENA 34 LLC	24911 AVENUE STANFORD	VALENCIA	CA	91355-1281	\$ 2.59
294 MEADOW VIEW LOOP	EAST HELENA, MT 59635	WH EAST HELENA 34 LLC	24911 AVENUE STANFORD	VALENCIA	CA	91355-1281	\$ 2.59
213 KINCROSS CT	EAST HELENA, MT 59635	WH EAST HELENA 34 LLC	24911 AVENUE STANFORD	VALENCIA	CA	91355-1281	\$ 2.59
214 KINCROSS CT	EAST HELENA, MT 59635	WH EAST HELENA 34 LLC	24911 AVENUE STANFORD	VALENCIA	CA	91355-1281	\$ 2.59
210 KINCROSS CT	EAST HELENA, MT 59635	WH EAST HELENA 34 LLC	24911 AVENUE STANFORD	VALENCIA	CA	91355-1281	\$ 2.59
208 KINCROSS CT	EAST HELENA, MT 59635	WH EAST HELENA 34 LLC	24911 AVENUE STANFORD	VALENCIA	CA	91355-1281	\$ 2.59
280 MEADOW VIEW LOOP	EAST HELENA, MT 59635	WH EAST HELENA 34 LLC	24911 AVENUE STANFORD	VALENCIA	CA	91355-1281	\$ 2.59
319 MEADOW VIEW LOOP	EAST HELENA, MT 59635	WH EAST HELENA 34 LLC	24911 AVENUE STANFORD	VALENCIA	CA	91355-1281	\$ 2.59
315 MEADOW VIEW LOOP	EAST HELENA, MT 59635	WH EAST HELENA 34 LLC	24911 AVENUE STANFORD	VALENCIA	CA	91355-1281	\$ 2.59
311 MEADOW VIEW LOOP	EAST HELENA, MT 59635	WH EAST HELENA 34 LLC	24911 AVENUE STANFORD	VALENCIA	CA	91355-1281	\$ 2.59
313 LOMOND CT	EAST HELENA, MT 59635	WH EAST HELENA 34 LLC	24911 AVENUE STANFORD	VALENCIA	CA	91355-1281	\$ 2.59
317 LOMOND CT	EAST HELENA, MT 59635	WH EAST HELENA 34 LLC	24911 AVENUE STANFORD	VALENCIA	CA	91355-1281	\$ 2.59
291 MEADOW VIEW LOOP	EAST HELENA, MT 59635	WH EAST HELENA 34 LLC	24911 AVENUE STANFORD	VALENCIA	CA	91355-1281	\$ 2.59
309 SUTHERLAND CT	EAST HELENA, MT 59635	WH EAST HELENA 34 LLC	21080 CENTRE POINTE PKWY	SANTA CLARITA	CA	91350-2984	\$ 2.59
347 MEADOW VIEW LOOP	EAST HELENA, MT 59635	WH EAST HELENA 34 LLC	21080 CENTRE POINTE PKWY	SANTA CLARITA	CA	91350-2984	\$ 2.59
314 SUTHERLAND CT	EAST HELENA, MT 59635	POWER CHRISTINA E & ERIC K	314 SUTHERLAND CT	EAST HELENA	MT	59635-3146	\$ 2.59
368 MEADOW VIEW LOOP	EAST HELENA, MT 59635	TIEFENTHALER NICHOLE & BRADLEY	368 MEADOW VIEW LOOP	EAST HELENA	MT	59635-3145	\$ 2.59
307 TAM O SHANTER CT	EAST HELENA, MT 59635	EDEEN GRACE ETAL	307 TAM O SHANTER CT	EAST HELENA	MT	59635-3373	\$ 2.59
326 MEADOW VIEW LOOP	EAST HELENA, MT 59635	WH EAST HELENA 34 LLC	24911 AVENUE STANFORD	VALENCIA	CA	91355-1281	\$ 2.59
312 MEADOW VIEW LOOP	EAST HELENA, MT 59635	WH EAST HELENA 34 LLC	24911 AVENUE STANFORD	VALENCIA	CA	91355-1281	\$ 2.59
215 KINCROSS CT	EAST HELENA, MT 59635	WH EAST HELENA 34 LLC	24911 AVENUE STANFORD	VALENCIA	CA	91355-1281	\$ 2.59
225 KINCROSS CT	EAST HELENA, MT 59635	WH EAST HELENA 34 LLC	24911 AVENUE STANFORD	VALENCIA	CA	91355-1281	\$ 2.59
216 KINCROSS CT	EAST HELENA, MT 59635	WH EAST HELENA 34 LLC	24911 AVENUE STANFORD	VALENCIA	CA	91355-1281	\$ 2.59
311 LOMOND CT	EAST HELENA, MT 59635	WH EAST HELENA 34 LLC	24911 AVENUE STANFORD	VALENCIA	CA	91355-1281	\$ 2.59
302 LOMOND CT	EAST HELENA, MT 59635	WH EAST HELENA 34 LLC	24911 AVENUE STANFORD	VALENCIA	CA	91355-1281	\$ 2.59
307 SUTHERLAND CT	EAST HELENA, MT 59635	WH EAST HELENA 34 LLC	21080 CENTRE POINTE PKWY	SANTA CLARITA	CA	91350-2984	\$ 2.59
348 MEADOW VIEW LOOP	EAST HELENA, MT 59635	KARA J HURST LIVING TRUST	348 MEADOW VIEW LOOP	EAST HELENA	MT	59635-3145	\$ 2.59
383 MEADOW VIEW LOOP	EAST HELENA, MT 59635	CRAGWALL JAMIE	383 MEADOW VIEW LOOP	EAST HELENA	MT	59635-3145	\$ 2.59
302 TAM O SHANTER CT	EAST HELENA, MT 59635	SEIDENSTICKER JENNY & JAMES E	302 TAM O SHANTER CT	EAST HELENA	MT	59635-3373	\$ 2.59
310 TAM O SHANTER CT	EAST HELENA, MT 59635	KORTH SHAWNA K	PO BOX 5131	HELENA	MT	59604-5131	\$ 2.59
316 TAM O SHANTER CT	EAST HELENA, MT 59635	COOPER CELENA & BRANDON	316 TOM O SHANTER CT	EAST HELENA	MT	59635-3373	\$ 2.59
304 MEADOW VIEW LOOP	EAST HELENA, MT 59635	WH EAST HELENA 34 LLC	24911 AVENUE STANFORD	VALENCIA	CA	91355-1281	\$ 2.59
298 MEADOW VIEW LOOP	EAST HELENA, MT 59635	WH EAST HELENA 34 LLC	24911 AVENUE STANFORD	VALENCIA	CA	91355-1281	\$ 2.59
212 KINCROSS CT	EAST HELENA, MT 59635	WH EAST HELENA 34 LLC	24911 AVENUE STANFORD	VALENCIA	CA	91355-1281	\$ 2.59
218 KINCROSS CT	EAST HELENA, MT 59635	WH EAST HELENA 34 LLC	24911 AVENUE STANFORD	VALENCIA	CA	91355-1281	\$ 2.59
309 LOMOND CT	EAST HELENA, MT 59635	WH EAST HELENA 34 LLC	24911 AVENUE STANFORD	VALENCIA	CA	91355-1281	\$ 2.59
306 LOMOND CT	EAST HELENA, MT 59635	WH EAST HELENA 34 LLC	24911 AVENUE STANFORD	VALENCIA	CA	91355-1281	\$ 2.59

Total Monthly Assessment: \$ 292.11



EXHIBIT C - PHASE 1 STREET LIGHT COST

August 23, 2020

Highland Meadows LLC
175 N 27th St Suite 900
Billings, MT 59101

Re: Request for Street Lighting at Highland Meadows Subdivision Phase I (5 Lights)

In response to your recent inquiry for service, we have an estimated cost listed below. This estimate is based on information provided on the Utility Plan and confirmed by Greg Wirth from Stahly Engineering on 8//21/2020, no frost, machine clean up only, and is valid for the next four months.

MONTHLY LIGHTING COST \$ 149.48

**Based on current rates and is subject to revision by the Public Service Commission of Montana.*

If you plan to move forward with this lease light installation, contact our New Construction Department as soon as possible. The following items must be completed before the job is engineered and scheduled:

- ✓ Obtain necessary utility easements.
- ✓ Sign a yard light contract.
- ✓ Clear access: clear trees, remove debris and other material from service route, & complete dirt work to grade.

Normally it takes eight to twelve weeks to install the lease lights after the above items are completed. When **all** of the above items are complete, please contact our New Construction Department for an expected time frame for the job to be scheduled.

I can be reached at **406-431-9849** if you have questions concerning the installation the leased lights.

Sincerely,

Curt Deppmeier

Northwestern Energy



EXHIBIT C - PHASE 2 STREET LIGHT COST

March 8, 2021

Highland Meadows LLC
175 N 27th St Suite 900
Billings, MT 59101

Re: Request for Street Lighting at Highland Meadows Subdivision Phase II (4 Lights)

In response to your recent inquiry for service, we have an estimated cost listed below. This estimate is based on information provided on the Utility Plan and confirmed by Greg Wirth from Stahly Engineering in January 2021, no frost, machine clean up only, and is valid for the next four months.

MONTHLY LIGHTING COST \$ 142.63

**Based on current rates and is subject to revision by the Public Service Commission of Montana.*

If you plan to move forward with this lease light installation, contact our New Construction Department as soon as possible. The following items must be completed before the job is engineered and scheduled:

- ✓ Obtain necessary utility easements.
- ✓ Sign a yard light contract.
- ✓ Clear access: clear trees, remove debris and other material from service route, & complete dirt work to grade.

Normally it takes eight to twelve weeks to install the lease lights after the above items are completed. When **all** of the above items are complete, please contact our New Construction Department for an expected time frame for the job to be scheduled.

I can be reached at **406-431-9849** if you have questions concerning the installation the leased lights.

Sincerely,

Curt Deppmeier

Northwestern Energy