

City of East Helena
Office of the City Clerk/Treasurer
PO Box 1170
306 Main Street, Room 103
East Helena, MT 59635
406-227-5321



July 19, 2023

**Notice of passage of resolution of intent to create the Street Maintenance District 101,
notice of right to protest, and notice of public hearing on Tuesday, August 15, 2023**

Dear Property Owner:

Street Maintenance District No. 101

On Tuesday, August 15, 2023 at 6:30 p.m., the East Helena City Council ("Council") will hold a public hearing to consider written protests to the formation of the Street Maintenance District No. 101 ("District") for the purpose of making local roadway improvements and maintenance to Tam O'Shanter Court, Meadow View Loop, Sutherland Court, Lamond Court, Kinross Court and the accompanying public facilities. You are being mailed this letter and the accompanying public notice because you are considered an owner of real property within the proposed district.

At a public council meeting on July 18, 2023, the Council adopted Resolution 589, a resolution of intention to create Special Improvement District No. 101. Attached to this letter you will find a copy of the notice of passage of Resolution 589. The resolution and accompanying exhibits are on file in the City Clerk/Treasurer's Office located at City Hall, 306 East Main Street, East Helena. The resolution and accompanying exhibits may also be viewed on the Public Notices page of the City's website at www.easthelenamt.us. The District, if created, will comprise the area shown on Exhibit A of Resolution 589 (attached) and will be for the purpose of making local roadway improvements and maintenance to Tam O'Shanter Court, Meadow View Loop, Sutherland Court, Lamond Court, Kinross Court and the accompanying public facilities.

If created, the costs of the District will be assessed bi-annually to all owners of real property within the District equally. Total assessment amounts by parcel can be found in Exhibit B (attached). If created, Resolution 589 levying the assessment will be considered for adoption on Tuesday, August 15, 2023 at 6:30 pm in Room 110 of City Hall and you will have an opportunity to object to the adoption of Resolution 589 at that public hearing. A copy of Resolution 589 is on file and subject to inspection in the City Clerk's Office.

Owners of property have 15 days from July 22, 2023 to make a written protest against the creation of the District. Written protests against the creation of District 101 must be filed by an owner of real property within the proposed District whose property is liable to be assessed for the improvements. Such protests must be delivered to the City Clerk at the City Hall, located at 306 East Main Street, East Helena, Montana, 59635, or by mail to P.O. Box 1170, East Helena, Montana 59635, not later than 5:00 p.m., M.T., on Monday, August 7, 2023.

For more information on the creation of the District please contact me at 406-227-5321.

Sincerely,

Amy Thorngren
City of East Helena Clerk/Treasurer

RESOLUTION NO. 589

A RESOLUTION OF THE CITY COUNCIL OF THE CITY OF EAST HELENA, MONTANA, RELATING TO STREET MAINTENANCE DISTRICT NO. 101 FOR MAINTENANCE AND IMPROVEMENTS TO THE INTERNAL STREETS OF PHASES 1 AND 2 OF HIGHLAND MEADOWS SUBDIVISION; DECLARING IT TO BE THE INTENTION OF THE CITY COUNCIL TO CREATE THE DISTRICT FOR THE PURPOSE OF UNDERTAKING LOCAL MAINTENANCE AND IMPROVEMENTS.

NOW, THEREFORE, BE IT RESOLVED BY THE CITY COUNCIL OF THE CITY OF EAST HELENA, MONTANA;

Section 1. Proposed Maintenance and Improvements: Intention To Create District. The City proposes to undertake certain local maintenance and improvements (the "Improvements") to benefit certain property located in the City limits. The improvements consist of roadway improvements to Tam O'Shanter Court, Meadow View Loop, Southerland Court, and maintenance of accompanying public facilities, including: graveling, sanding, chip & crack sealing, seal coating, overlaying, treating, sweeping, flushing, snow removal, leaf and debris removal, the operation, maintenance, and repair of traffic signal systems, the repair of traffic signs, the placement and maintenance of pavement markings, curb and gutter repair, and minor sidewalk repair. The total annual estimated costs of Improvements are \$33,802.11 which are to be funded through the District. It is the intention of this Council to create and establish in the City under Montana Code Annotated, Title 7, Chapter 12, Parts, 41, 42 and 44 a street maintenance district (the "District") for the purpose of financing the Improvements and paying costs incidental thereto, including any costs associated with the creation and administration of the District, and the funding of an administrative charge to the General Fund for costs associated with financing of the Improvements (collectively the "Incidental Costs").

Section 2. Number of District. The District, if the same shall be created and established, shall be known and designated as Street Maintenance District No. 101 of the City of East Helena, Montana.

Section 3. Boundaries of District. The limits and boundaries of the District are depicted by the continuous line circumscribing the exterior boundaries of the properties shown on the map attached as Exhibit A hereto (which is hereby incorporated herein and made a part hereof) and includes all those lots and parcels on Tam O'Shanter Court, Meadow View Loop, Southerland Court, Lamond Court, and Kinross Court, descriptions of which are contained in Exhibit B hereto (which is hereby incorporated herein and made a part hereof), which boundaries are designated and confirmed as the boundaries of the District.

Section 4. Benefited Property. The District and territory included within the limits and boundaries described in Section 3 and shown on Exhibit A and Exhibit B are hereby declared to be the street maintenance district and the territory that will benefit from and be benefitted by the Improvements and will be assessed for a portion of the costs of the Improvements described herein. The property included within said limits and boundaries is hereby declared to be the property benefitted by the Improvements.

Section 5. General Character of the Improvements. The Improvements to be constructed and maintained generally consist of annual graveling, sanding, chip & crack sealing, seal coating, overlaying, treating, sweeping, flushing, snow removal, leaf and debris removal, the operation, maintenance, and repair of traffic signal systems, the repair of traffic signs, the placement and maintenance of pavement markings, curb and gutter repair, and minor sidewalk repair on Tam O'Shanter Court, Meadow View Loop, Southerland Court, Lamond Court, Kinross Court, and the accompanying public facilities. Each lot, parcel, or tract abutting such portion of these streets, as set forth on the attached Exhibit B, will be benefited by such Improvements.

Section 6. Engineer and Estimated Cost. The City, acting through its contract engineering firm, shall be the engineer for the District. The Engineer has estimated the initial annual costs of the Improvements to be \$33,802.11, as shown on Exhibit C, attached hereto (and hereby incorporated herein and made a part hereof). The District's costs of the Improvements are shown on Exhibit B (which is hereby incorporated herein and made a part hereof).

Section 7. Assessment Method.

7.1 Property To Be Assessed. All properties in the District will be assessed for their proportionate share of the costs of the Improvements plus Incidental Costs from which they derive a benefit as determined and set forth herein. The Improvements plus Incidental Costs shall be assessed against the property in the District benefiting from these Improvements, based on the method authorized by Section 7-12-4422(2)(c), M.C.A., as particularly applied and set forth in Section 7.2 hereof.

7.2 Equal Assessment To Each Lot. The Improvements within the District plus Incidental Costs will be assessed equally to each lot or parcel located within the district without regard to assessable area of the lot or parcel. The city council has determined that the benefits derived from the Improvements by each lot or parcel are substantially equivalent given that each lot or parcel is a single-family residence with similar expected estimated vehicle trips generated.

7.3 Assessment Methodology Equitable and Consistent with Benefit. This Council hereby determines that the method of assessment described above and the assessment of costs of the District's Improvements against the properties benefitted thereby as prescribed in Section 7 are equitable and in proportion to and not exceeding the special benefits derived from the Improvements by the lots, tracts and parcels to be assessed therefore within the District.

Section 8. Public Hearing: Protests. At any time within fifteen (15) days (or such longer period required by law) from and after the date of the first publication of the notice of the passage and approval of this Resolution, any owner of a lot, tract, or parcel within the District subject to assessment and taxation for the cost and expense of making the Improvements may make and file with the City Clerk until 5:00 p.m., MT, on the expiration date of said 15-day period written protest against the proposed Improvements, or against the creation of the District. Such protest must be in writing, identify the property in the District owned by the protestor and be signed by all owners of the property. The written protest must be delivered to the City Clerk, who shall endorse thereon the date and hour of its receipt. For purposes of calculating protests

under Section 7-12-4113, MCA, the sufficiency or insufficiency of protests, if any, as to the entire proposed District shall be based on the estimated total amount of special assessments made by valid protestors in the District as compared to the estimated total principle amount of special assessments to be levied against all properties in the District. The Council will at a City Council Meeting after the expiration of the protest period, on August 15, 2023, proceed to hear and pass upon all such protests so made and filed.

Section 9. Notice of Passage of Resolution of Intention. The City Clerk is hereby authorized and directed to publish or cause to be published a copy of a notice of the passage of this resolution in the Independent Record, a newspaper of general circulation in the county in the form and manner prescribed by law, and to mail or cause to be mailed a copy of said notice to every person, firm, corporation, or the agent of such person, firm, or corporation having real property within the District listed in the owner's name upon the last completed assessment roll for state, county and school district taxes, at the owners last-known address, on or before the same day such notice is first published.

Passed, by the City Council of the City of East Helena, Montana, and approved by the Mayor this 18th day of July 2023.



Kelly Harris, Mayor

ATTEST:



Amy Thorngren, City Clerk-Treasurer



CERTIFICATE AS TO RESOLUION AND ADOPTING VOTE

I, the undersigned, being the duly qualified and acting recording officer of the City of

CERTIFICATE AS TO RESOLUION AND ADOPTING VOTE

I, the undersigned, being the duly qualified and acting recording officer of the City of East Helena, Montana (the "City") hereby certify that the attached resolution is a true copy of Resolution No. 589, entitled: "A RESOLUTION OF THE CITY COUNCIL OF THE CITY OF EAST HELENA, MONTANA, RELATING TO STREET MAINTENANCE DISTRICT NO. 101 FOR MAINTENANCE AND IMPROVEMENTS TO THE INTERNAL STREETS OF PHASES 1 AND 2 OF HIGHLAND MEADOWS SUBDIVISION; DECLARING IT TO BE THE INTENTION OF THE CITY COUNCIL TO CREATE THE DISTRICT FOR THE PURPOSE OF UNDERTAKING LOCAL MAINTENANCE AND IMPROVEMENTS" (the "Resolution"), on file in the original records of the City in my legal custody; that the Resolution was duly adopted by the City Council of the City at a meeting on July 18th, 2023, and that the meeting was duly held by the City Council and was attended throughout by a quorum, pursuant to call and notice of such meeting given as required by law; and that the Resolution has not as of the date hereof been amended or repealed.

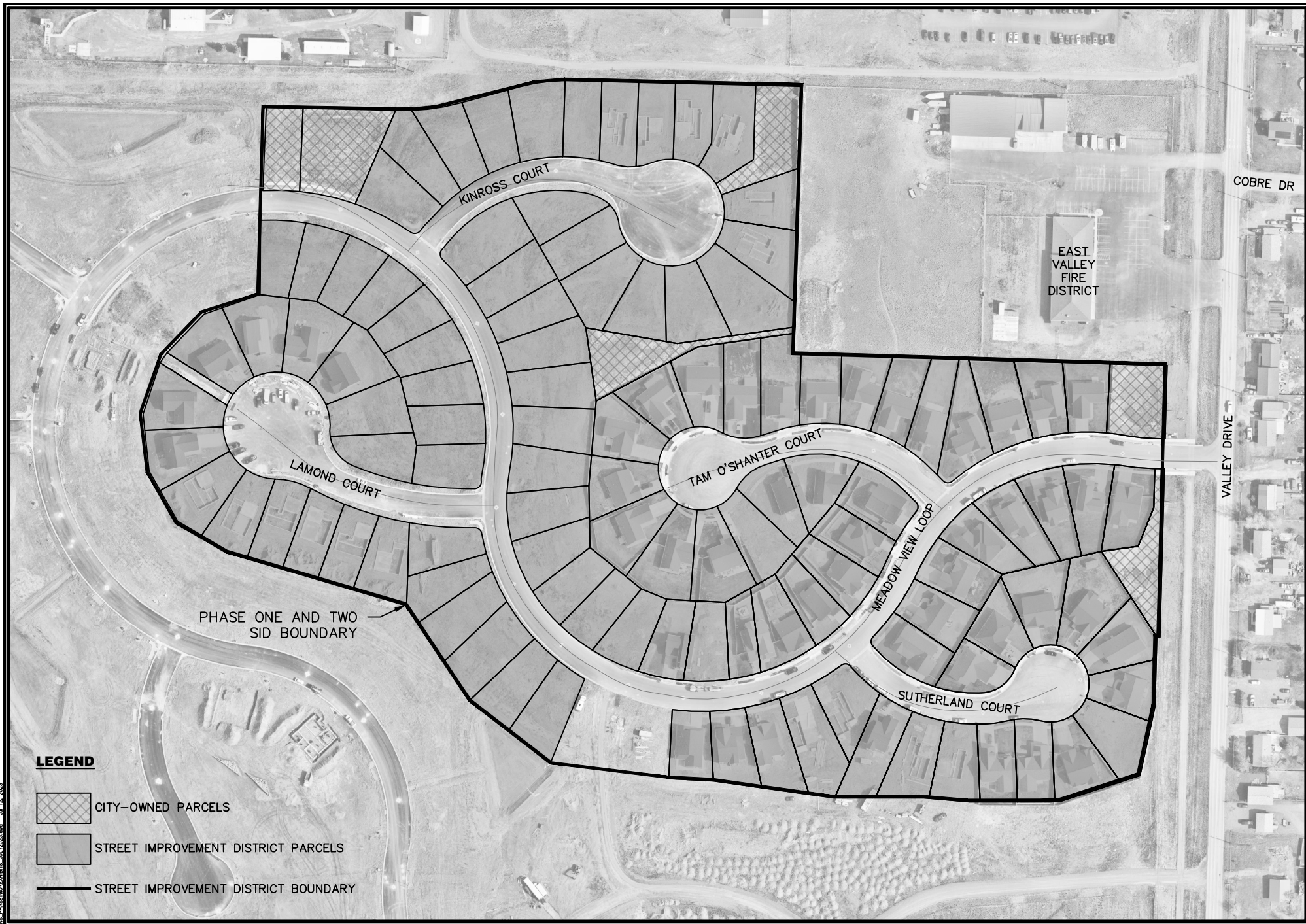
I further certify that, upon vote being taken on the Resolution at said meeting, the following Council Members voted in favor thereof:

Don Dahl,
Judy Leland, Wesley Feist, and
Suzanne Ferguson ;
voted against the same: none ;
abstained from voting thereon: none ;
or were absent: none .

WITNESS my hand officially this 18th day of July, 2023.



City Clerk



LEGEND

-  CITY-OWNED PARCELS
-  STREET IMPROVEMENT DISTRICT PARCELS
-  STREET IMPROVEMENT DISTRICT BOUNDARY

PHASE ONE AND TWO
SID BOUNDARY



Map Created by:
**ROBERT PECCIA &
ASSOCIATES**
www.rpa-hln.com



**HIGHLAND MEADOWS SUBDIVISION
PHASE ONE AND TWO STREET IMPROVEMENT DISTRICT
EXHIBIT A**

PLANETCALIFORNIA.SUBDIVISIONS.PHASEONEANDTWO.SIDEXHIBIT.A.JUL12.2023

EXHIBIT B - ASSESSMENT

Property Address	City, State, Zip Code	Property Owner	Owner Mailing Address	Owner City	Owner State	Owner Zip Code	Yearly Assessment
311 SUTHERLAND CT	EAST HELENA, MT 59635	MORRIS NATHAN T & CATHY M	311 SUTHERLAND CT	EAST HELENA	MT	59635-3146	\$ 299.13
315 SUTHERLAND CT	EAST HELENA, MT 59635	JAMISON PAMELA	315 SUTHERLAND CT	EAST HELENA	MT	59635-3146	\$ 299.13
317 SUTHERLAND CT	EAST HELENA, MT 59635	SILVER CREEK INVESTMENTS	4855 IRON HORSE RD	HELENA	MT	59602-8443	\$ 299.13
339 MEADOW VIEW LOOP	EAST HELENA, MT 59635	WINKLEPLECK LARRY & LINDA LOU	339 MEADOW VIEW LOOP	EAST HELENA	MT	59635-3145	\$ 299.13
355 MEADOW VIEW LOOP	EAST HELENA, MT 59635	WH EAST HELENA 34 LLC	21080 CENTRE POINTE PKWY	SANTA CLARITA	CA	91350-2984	\$ 299.13
319 SUTHERLAND CT	EAST HELENA, MT 59635	LOEWEN JUSTIN & TAYLOR	319 SUTHERLAND CT	EAST HELENA	MT	59635-3146	\$ 299.13
352 MEADOW VIEW LOOP	EAST HELENA, MT 59635	JOHNSON RAYMOND & KELLY	352 MEADOW VIEW LOOP	EAST HELENA	MT	59635-3145	\$ 299.13
360 MEADOW VIEW LOOP	EAST HELENA, MT 59635	MULLIKIN CONNIE	PO BOX 1784	EAST HELENA	MT	59635-1784	\$ 299.13
367 MEADOW VIEW LOOP	EAST HELENA, MT 59635	GILSON MARCY A	367 MEADOW VIEW LOOP	EAST HELENA	MT	59635-3145	\$ 299.13
317 TAM O SHANTER CT	EAST HELENA, MT 59635	CHRISTOPHERSON KURT A & DARCY J	317 TAM O SHANTER CT	EAST HELENA	MT	59635-3373	\$ 299.13
319 TAM O SHANTER CT	EAST HELENA, MT 59635	LEWIS CHRISTOPHER JAMES ETAL	319 TAM O SHANTER CT	EAST HELENA	MT	59635-3373	\$ 299.13
375 MEADOW VIEW LOOP	EAST HELENA, MT 59635	MICHAEL GLEN & SUSAN L CRAIN DECLARATION OF TRUST	375 MEADOW VIEW LOOP	EAST HELENA	MT	59635-3145	\$ 299.13
379 MEADOW VIEW LOOP	EAST HELENA, MT 59635	WELNA BENJAMIN & KATE	379 MEADOW VIEW LOOP	EAST HELENA	MT	59635-3145	\$ 299.13
320 TAM O SHANTER CT	EAST HELENA, MT 59635	BRIGHTON RYAN E	320 TAM O SHANTER CT	EAST HELENA	MT	59635-3373	\$ 299.13
378 MEADOW VIEW LOOP	EAST HELENA, MT 59635	BLOOMQUIST LINDSEY RENEE & JOSEPH WILLIAM	PO BOX 125	WOLF CREEK	MT	59648-0125	\$ 299.13
306 TAM O SHANTER CT	EAST HELENA, MT 59635	LUNDY LOREN L & JULIE M	26480 W BURNETT RD	BUCKEYE	AZ	85396-9241	\$ 299.13
300 MEADOW VIEW LOOP	EAST HELENA, MT 59635	WH EAST HELENA 34 LLC	24911 AVENUE STANFORD	VALENCIA	CA	91355-1281	\$ 299.13
205 KINCROSS CT	EAST HELENA, MT 59635	WH EAST HELENA 34 LLC	24911 AVENUE STANFORD	VALENCIA	CA	91355-1281	\$ 299.13
217 KINCROSS CT	EAST HELENA, MT 59635	WH EAST HELENA 34 LLC	24911 AVENUE STANFORD	VALENCIA	CA	91355-1281	\$ 299.13
292 MEADOW VIEW LOOP	EAST HELENA, MT 59635	WH EAST HELENA 34 LLC	24911 AVENUE STANFORD	VALENCIA	CA	91355-1281	\$ 299.13
290 MEADOW VIEW LOOP	EAST HELENA, MT 59635	WH EAST HELENA 34 LLC	24911 AVENUE STANFORD	VALENCIA	CA	91355-1281	\$ 299.13
219 KINCROSS CT	EAST HELENA, MT 59635	WH EAST HELENA 34 LLC	24911 AVENUE STANFORD	VALENCIA	CA	91355-1281	\$ 299.13
226 KINCROSS CT	EAST HELENA, MT 59635	WH EAST HELENA 34 LLC	24911 AVENUE STANFORD	VALENCIA	CA	91355-1281	\$ 299.13
224 KINCROSS CT	EAST HELENA, MT 59635	WH EAST HELENA 34 LLC	24911 AVENUE STANFORD	VALENCIA	CA	91355-1281	\$ 299.13
220 KINCROSS CT	EAST HELENA, MT 59635	WH EAST HELENA 34 LLC	24911 AVENUE STANFORD	VALENCIA	CA	91355-1281	\$ 299.13
VALLEY DR	EAST HELENA, MT 59635	WH EAST HELENA 34 LLC	24911 AVENUE STANFORD	VALENCIA	CA	91355-1281	\$ 299.13
307 LOMOND CT	EAST HELENA, MT 59635	WH EAST HELENA 34 LLC	24911 AVENUE STANFORD	VALENCIA	CA	91355-1281	\$ 299.13
320 LOMOND CT	EAST HELENA, MT 59635	WH EAST HELENA 34 LLC	24911 AVENUE STANFORD	VALENCIA	CA	91355-1281	\$ 299.13
312 LOMOND CT	EAST HELENA, MT 59635	WH EAST HELENA 34 LLC	24911 AVENUE STANFORD	VALENCIA	CA	91355-1281	\$ 299.13
279 MEADOW VIEW LOOP	EAST HELENA, MT 59635	WH EAST HELENA 34 LLC	24911 AVENUE STANFORD	VALENCIA	CA	91355-1281	\$ 299.13
275 MEADOW VIEW LOOP	EAST HELENA, MT 59635	WH EAST HELENA 34 LLC	24911 AVENUE STANFORD	VALENCIA	CA	91355-1281	\$ 299.13
313 SUTHERLAND CT	EAST HELENA, MT 59635	BLAZQUEZ ALEXANDER & VICTORIA	3516 SAVANA LN	ALAMEDA	CA	94502-7023	\$ 299.13
318 SUTHERLAND CT	EAST HELENA, MT 59635	FORD JASON & KATHY	7743 CANYON FERRY RD	HELENA	MT	59602-8518	\$ 299.13
312 SUTHERLAND CT	EAST HELENA, MT 59635	LASHLEY RONALD II	312 SUTHERLAND CT	EAST HELENA	MT	59635-3146	\$ 299.13
316 SUTHERLAND CT	EAST HELENA, MT 59635	MCCAULEY MACY & HUGH	316 SUTHERLAND CT	EAST HELENA	MT	59635	\$ 299.13
387 MEADOW VIEW LOOP	EAST HELENA, MT 59635	WH EAST HELENA 34 LLC	21080 CENTRE POINTE PKWY	SANTA CLARITA	CA	91350-2984	\$ 299.13
304 TAM O SHANTER CT	EAST HELENA, MT 59635	MERCADO RAMON E ET AL	304 TAM O SHANTER CT	EAST HELENA	MT	59635	\$ 299.13
384 MEADOW VIEW LOOP	EAST HELENA, MT 59635	WH EAST HELENA 34 LLC	21080 CENTRE POINTE PKWY	SANTA CLARITA	CA	91350-2984	\$ 299.13
271 MEADOW VIEW LOOP	EAST HELENA, MT 59635	WH EAST HELENA 34 LLC	24911 AVENUE STANFORD	VALENCIA	CA	91355-1281	\$ 299.13
204 KINCROSS CT	EAST HELENA, MT 59635	WH EAST HELENA 34 LLC	24911 AVENUE STANFORD	VALENCIA	CA	91355-1281	\$ 299.13
327 MEADOW VIEW LOOP	EAST HELENA, MT 59635	WH EAST HELENA 34 LLC	24911 AVENUE STANFORD	VALENCIA	CA	91355-1281	\$ 299.13
303 LOMOND CT	EAST HELENA, MT 59635	WH EAST HELENA 34 LLC	24911 AVENUE STANFORD	VALENCIA	CA	91355-1281	\$ 299.13
305 LOMOND CT	EAST HELENA, MT 59635	WH EAST HELENA 34 LLC	24911 AVENUE STANFORD	VALENCIA	CA	91355-1281	\$ 299.13
318 LOMOND CT	EAST HELENA, MT 59635	WH EAST HELENA 34 LLC	24911 AVENUE STANFORD	VALENCIA	CA	91355-1281	\$ 299.13
287 MEADOW VIEW LOOP	EAST HELENA, MT 59635	WH EAST HELENA 34 LLC	24911 AVENUE STANFORD	VALENCIA	CA	91355-1281	\$ 299.13
283 MEADOW VIEW LOOP	EAST HELENA, MT 59635	WH EAST HELENA 34 LLC	24911 AVENUE STANFORD	VALENCIA	CA	91355-1281	\$ 299.13
343 MEADOW VIEW LOOP	EAST HELENA, MT 59635	GIBBONS ERIC & KAYLA	343 MEADOW VIEW LOOP	EAST HELENA	MT	59635-3145	\$ 299.13
310 SUTHERLAND CT	EAST HELENA, MT 59635	BURKETT CLAY & ALESA	310 SUTHERLAND CT	EAST HELENA	MT	59635-3146	\$ 299.13
304 SUTHERLAND CT	EAST HELENA, MT 59635	CAMPBELL NICOLE	PO BOX 1844	EAST HELENA	MT	59635-1844	\$ 299.13
344 MEADOW VIEW LOOP	EAST HELENA, MT 59635	GEBHARDT COLE	145 HEREFORD DR	BELGRADE	MT	59714-8875	\$ 299.13
338 MEADOW VIEW LOOP	EAST HELENA, MT 59635	EVANS CHAD & JESSICA	338 MEADOW VIEW LOOP	EAST HELENA	MT	59635-3145	\$ 299.13
356 MEADOW VIEW LOOP	EAST HELENA, MT 59635	CHRISTIANSEN TAMARA ETAL	356 MEADOW VIEW LOOP	EAST HELENA	MT	59635-3145	\$ 299.13
321 TAM O SHANTER CT	EAST HELENA, MT 59635	GIROLAMI JOHN & SHELLEY	321 TAM O SHANTER CT	EAST HELENA	MT	59635-3373	\$ 299.13
374 MEADOW VIEW LOOP	EAST HELENA, MT 59635	SCHULTZ ROBERT B	374 MEADOW VIEW LOOP	EAST HELENA	MT	59635-3145	\$ 299.13
318 TAM O SHANTER CT	EAST HELENA, MT 59635	BARNETT DONALD & LELA GAIL	318 TAM O SHANTER CT	EAST HELENA	MT	59635-3373	\$ 299.13
380 MEADOW VIEW LOOP	EAST HELENA, MT 59635	ANTHONY JOHN D	380 MEADOW VIEW LOOP	EAST HELENA	MT	59635	\$ 299.13
334 MEADOW VIEW LOOP	EAST HELENA, MT 59635	WH EAST HELENA 34 LLC	24911 AVENUE STANFORD	VALENCIA	CA	91355-1281	\$ 299.13
318 MEADOW VIEW LOOP	EAST HELENA, MT 59635	WH EAST HELENA 34 LLC	24911 AVENUE STANFORD	VALENCIA	CA	91355-1281	\$ 299.13

EXHIBIT B - ASSESSMENT

Property Address	City, State, Zip Code	Property Owner	Owner Mailing Address	Owner City	Owner State	Owner Zip Code	Yearly Assessment
211 KINCROSS CT	EAST HELENA, MT 59635	WH EAST HELENA 34 LLC	24911 AVENUE STANFORD	VALENCIA	CA	91355-1281	\$ 299.13
206 KINCROSS CT	EAST HELENA, MT 59635	WH EAST HELENA 34 LLC	24911 AVENUE STANFORD	VALENCIA	CA	91355-1281	\$ 299.13
301 LOMOND CT	EAST HELENA, MT 59635	WH EAST HELENA 34 LLC	24911 AVENUE STANFORD	VALENCIA	CA	91355-1281	\$ 299.13
315 LOMOND CT	EAST HELENA, MT 59635	WH EAST HELENA 34 LLC	24911 AVENUE STANFORD	VALENCIA	CA	91355-1281	\$ 299.13
314 LOMOND CT	EAST HELENA, MT 59635	WH EAST HELENA 34 LLC	24911 AVENUE STANFORD	VALENCIA	CA	91355-1281	\$ 299.13
316 LOMOND CT	EAST HELENA, MT 59635	WH EAST HELENA 34 LLC	24911 AVENUE STANFORD	VALENCIA	CA	91355-1281	\$ 299.13
299 MEADOW VIEW LOOP	EAST HELENA, MT 59635	WH EAST HELENA 34 LLC	24911 AVENUE STANFORD	VALENCIA	CA	91355-1281	\$ 299.13
295 MEADOW VIEW LOOP	EAST HELENA, MT 59635	WH EAST HELENA 34 LLC	24911 AVENUE STANFORD	VALENCIA	CA	91355-1281	\$ 299.13
351 MEADOW VIEW LOOP	EAST HELENA, MT 59635	WH EAST HELENA 34 LLC	21080 CENTRE POINTE PKWY	SANTA CLARITA	CA	91350-2984	\$ 299.13
305 SUTHERLAND CT	EAST HELENA, MT 59635	CHRISTENSEN ROGNALD & LORA	305 SUTHERLAND CT	EAST HELENA	MT	59635-3146	\$ 299.13
363 MEADOW VIEW LOOP	EAST HELENA, MT 59635	WARD NATHANIEL TYLER ETAL	363 MEADOW VIEW LOOP	EAST HELENA	MT	59635-3145	\$ 299.13
315 TAM O SHANTER CT	EAST HELENA, MT 59635	GOODMAN PAUL	PO BOX 472	EAST HELENA	MT	59635-0472	\$ 299.13
364 MEADOW VIEW LOOP	EAST HELENA, MT 59635	NELSON TYLER & ASHLYN	364 MEADOW VIEW LOOP	EAST HELENA	MT	59635-3145	\$ 299.13
371 MEADOW VIEW LOOP	EAST HELENA, MT 59635	BEATY STEPHEN & SILVER	371 MEADOW VIEW LOOP	EAST HELENA	MT	59635-3145	\$ 299.13
311 TAM O SHANTER CT	EAST HELENA, MT 59635	YOUNG-SCHUYLER KURTIS ETAL	311 TAM O SHANTER CT	EAST HELENA	MT	59635-3373	\$ 299.13
322 TAM O SHANTER CT	EAST HELENA, MT 59635	HULSE ZACHARY D & MARY C	322 TAM O SHANTER CT	EAST HELENA	MT	59635-3373	\$ 299.13
314 TAM O SHANTER CT	EAST HELENA, MT 59635	HANLEY BERNARD T & MARCIA E	314 TOM O SHANTER CT	EAST HELENA	MT	59635-3373	\$ 299.13
308 TAM O SHANTER CT	EAST HELENA, MT 59635	SPRAGUE BRIAN A & BAILEY L	308 TAM O SHANTER CT	EAST HELENA	MT	59635	\$ 299.13
306 MEADOW VIEW LOOP	EAST HELENA, MT 59635	WH EAST HELENA 34 LLC	24911 AVENUE STANFORD	VALENCIA	CA	91355-1281	\$ 299.13
294 MEADOW VIEW LOOP	EAST HELENA, MT 59635	WH EAST HELENA 34 LLC	24911 AVENUE STANFORD	VALENCIA	CA	91355-1281	\$ 299.13
213 KINCROSS CT	EAST HELENA, MT 59635	WH EAST HELENA 34 LLC	24911 AVENUE STANFORD	VALENCIA	CA	91355-1281	\$ 299.13
214 KINCROSS CT	EAST HELENA, MT 59635	WH EAST HELENA 34 LLC	24911 AVENUE STANFORD	VALENCIA	CA	91355-1281	\$ 299.13
210 KINCROSS CT	EAST HELENA, MT 59635	WH EAST HELENA 34 LLC	24911 AVENUE STANFORD	VALENCIA	CA	91355-1281	\$ 299.13
208 KINCROSS CT	EAST HELENA, MT 59635	WH EAST HELENA 34 LLC	24911 AVENUE STANFORD	VALENCIA	CA	91355-1281	\$ 299.13
280 MEADOW VIEW LOOP	EAST HELENA, MT 59635	WH EAST HELENA 34 LLC	24911 AVENUE STANFORD	VALENCIA	CA	91355-1281	\$ 299.13
319 MEADOW VIEW LOOP	EAST HELENA, MT 59635	WH EAST HELENA 34 LLC	24911 AVENUE STANFORD	VALENCIA	CA	91355-1281	\$ 299.13
315 MEADOW VIEW LOOP	EAST HELENA, MT 59635	WH EAST HELENA 34 LLC	24911 AVENUE STANFORD	VALENCIA	CA	91355-1281	\$ 299.13
311 MEADOW VIEW LOOP	EAST HELENA, MT 59635	WH EAST HELENA 34 LLC	24911 AVENUE STANFORD	VALENCIA	CA	91355-1281	\$ 299.13
313 LOMOND CT	EAST HELENA, MT 59635	WH EAST HELENA 34 LLC	24911 AVENUE STANFORD	VALENCIA	CA	91355-1281	\$ 299.13
317 LOMOND CT	EAST HELENA, MT 59635	WH EAST HELENA 34 LLC	24911 AVENUE STANFORD	VALENCIA	CA	91355-1281	\$ 299.13
291 MEADOW VIEW LOOP	EAST HELENA, MT 59635	WH EAST HELENA 34 LLC	24911 AVENUE STANFORD	VALENCIA	CA	91355-1281	\$ 299.13
309 SUTHERLAND CT	EAST HELENA, MT 59635	WH EAST HELENA 34 LLC	21080 CENTRE POINTE PKWY	SANTA CLARITA	CA	91350-2984	\$ 299.13
347 MEADOW VIEW LOOP	EAST HELENA, MT 59635	WH EAST HELENA 34 LLC	21080 CENTRE POINTE PKWY	SANTA CLARITA	CA	91350-2984	\$ 299.13
314 SUTHERLAND CT	EAST HELENA, MT 59635	POWER CHRISTINA E & ERIC K	314 SUTHERLAND CT	EAST HELENA	MT	59635-3146	\$ 299.13
368 MEADOW VIEW LOOP	EAST HELENA, MT 59635	TIEFENTHALER NICHOLE & BRADLEY	368 MEADOW VIEW LOOP	EAST HELENA	MT	59635-3145	\$ 299.13
307 TAM O SHANTER CT	EAST HELENA, MT 59635	EDEEN GRACE ETAL	307 TAM O SHANTER CT	EAST HELENA	MT	59635-3373	\$ 299.13
326 MEADOW VIEW LOOP	EAST HELENA, MT 59635	WH EAST HELENA 34 LLC	24911 AVENUE STANFORD	VALENCIA	CA	91355-1281	\$ 299.13
312 MEADOW VIEW LOOP	EAST HELENA, MT 59635	WH EAST HELENA 34 LLC	24911 AVENUE STANFORD	VALENCIA	CA	91355-1281	\$ 299.13
215 KINCROSS CT	EAST HELENA, MT 59635	WH EAST HELENA 34 LLC	24911 AVENUE STANFORD	VALENCIA	CA	91355-1281	\$ 299.13
225 KINCROSS CT	EAST HELENA, MT 59635	WH EAST HELENA 34 LLC	24911 AVENUE STANFORD	VALENCIA	CA	91355-1281	\$ 299.13
216 KINCROSS CT	EAST HELENA, MT 59635	WH EAST HELENA 34 LLC	24911 AVENUE STANFORD	VALENCIA	CA	91355-1281	\$ 299.13
311 LOMOND CT	EAST HELENA, MT 59635	WH EAST HELENA 34 LLC	24911 AVENUE STANFORD	VALENCIA	CA	91355-1281	\$ 299.13
302 LOMOND CT	EAST HELENA, MT 59635	WH EAST HELENA 34 LLC	24911 AVENUE STANFORD	VALENCIA	CA	91355-1281	\$ 299.13
307 SUTHERLAND CT	EAST HELENA, MT 59635	WH EAST HELENA 34 LLC	21080 CENTRE POINTE PKWY	SANTA CLARITA	CA	91350-2984	\$ 299.13
348 MEADOW VIEW LOOP	EAST HELENA, MT 59635	KARA J HURST LIVING TRUST	348 MEADOW VIEW LOOP	EAST HELENA	MT	59635-3145	\$ 299.13
383 MEADOW VIEW LOOP	EAST HELENA, MT 59635	CRAGWALL JAMIE	383 MEADOW VIEW LOOP	EAST HELENA	MT	59635-3145	\$ 299.13
302 TAM O SHANTER CT	EAST HELENA, MT 59635	SEIDENSTICKER JENNY & JAMES E	302 TAM O SHANTER CT	EAST HELENA	MT	59635-3373	\$ 299.13
310 TAM O SHANTER CT	EAST HELENA, MT 59635	KORTH SHAWNA K	PO BOX 5131	HELENA	MT	59604-5131	\$ 299.13
316 TAM O SHANTER CT	EAST HELENA, MT 59635	COOPER CELENA & BRANDON	316 TOM O SHANTER CT	EAST HELENA	MT	59635-3373	\$ 299.13
304 MEADOW VIEW LOOP	EAST HELENA, MT 59635	WH EAST HELENA 34 LLC	24911 AVENUE STANFORD	VALENCIA	CA	91355-1281	\$ 299.13
298 MEADOW VIEW LOOP	EAST HELENA, MT 59635	WH EAST HELENA 34 LLC	24911 AVENUE STANFORD	VALENCIA	CA	91355-1281	\$ 299.13
212 KINCROSS CT	EAST HELENA, MT 59635	WH EAST HELENA 34 LLC	24911 AVENUE STANFORD	VALENCIA	CA	91355-1281	\$ 299.13
218 KINCROSS CT	EAST HELENA, MT 59635	WH EAST HELENA 34 LLC	24911 AVENUE STANFORD	VALENCIA	CA	91355-1281	\$ 299.13
309 LOMOND CT	EAST HELENA, MT 59635	WH EAST HELENA 34 LLC	24911 AVENUE STANFORD	VALENCIA	CA	91355-1281	\$ 299.13
306 LOMOND CT	EAST HELENA, MT 59635	WH EAST HELENA 34 LLC	24911 AVENUE STANFORD	VALENCIA	CA	91355-1281	\$ 299.13

Total Yearly Assessment: \$ 33,802.11

EXHIBIT C - COST ESTIMATE

Highland Meadows Phase 1 & 2 SID								
Street Improvement District Costs 7/12/2023		<table border="1"> <tr> <td>Lots:</td> <td>113</td> </tr> <tr> <td>SY Asphalt in Phases:</td> <td>21,158</td> </tr> </table>			Lots:	113	SY Asphalt in Phases:	21,158
Lots:	113							
SY Asphalt in Phases:	21,158							
COST ESTIMATE								
	<u>ITEM</u>	<u>QUAN.</u>	<u>UNIT</u>	<u>UNIT PRICE</u>	<u>TOTAL PRICE</u>			
	Snow Plowing	21,158	SY	\$ 0.15	\$ 3,262.50			
	Snow Removal	32	HR	\$ 220.00	\$ 7,040.00			
	Sanding	21,158	SY	\$ 0.09	\$ 1,833.75			
	Chip Sealing	21,158	SY	\$ 0.32	\$ 6,792.02			
	Crack Sealing	21,158	SY	\$ 0.02	\$ 432.59			
	Curb & Sidewalk Repair	1	LS	\$ 1,000.00	\$ 1,000.00			
	Crosswalk Maintenance	1	LS	\$ 500.00	\$ 500.00			
	Catch Basin Cleaning	9	EA	\$ 200.00	\$ 1,800.00			
	Storage Pond Maintenance	6	EA	\$ 750.00	\$ 4,500.00			
	Street Sign Maintenance	1	LS	\$ 200.00	\$ 200.00			
	County Street Sweeping	21,158	SY	\$ 0.20	\$ 4,231.62			
	City Administration Fee	1	LS	\$ 100.00	\$ 100.00			
	Improvement District Creation (7 Years)	1	LS	\$ 500.00	\$ 500.00			
Sub Total SID Cost - 2023					\$ 32,192.48			
Lewis & Clark County 5% Administration Fee					\$ 1,609.62			
Total Yearly Cost					\$ 33,802.11			
Yearly Cost per Lot (113 Lots)					\$ 299.13			
Cost per Lot per 6 Months					\$ 149.57			
Cost per Lot per Month					\$ 24.93			